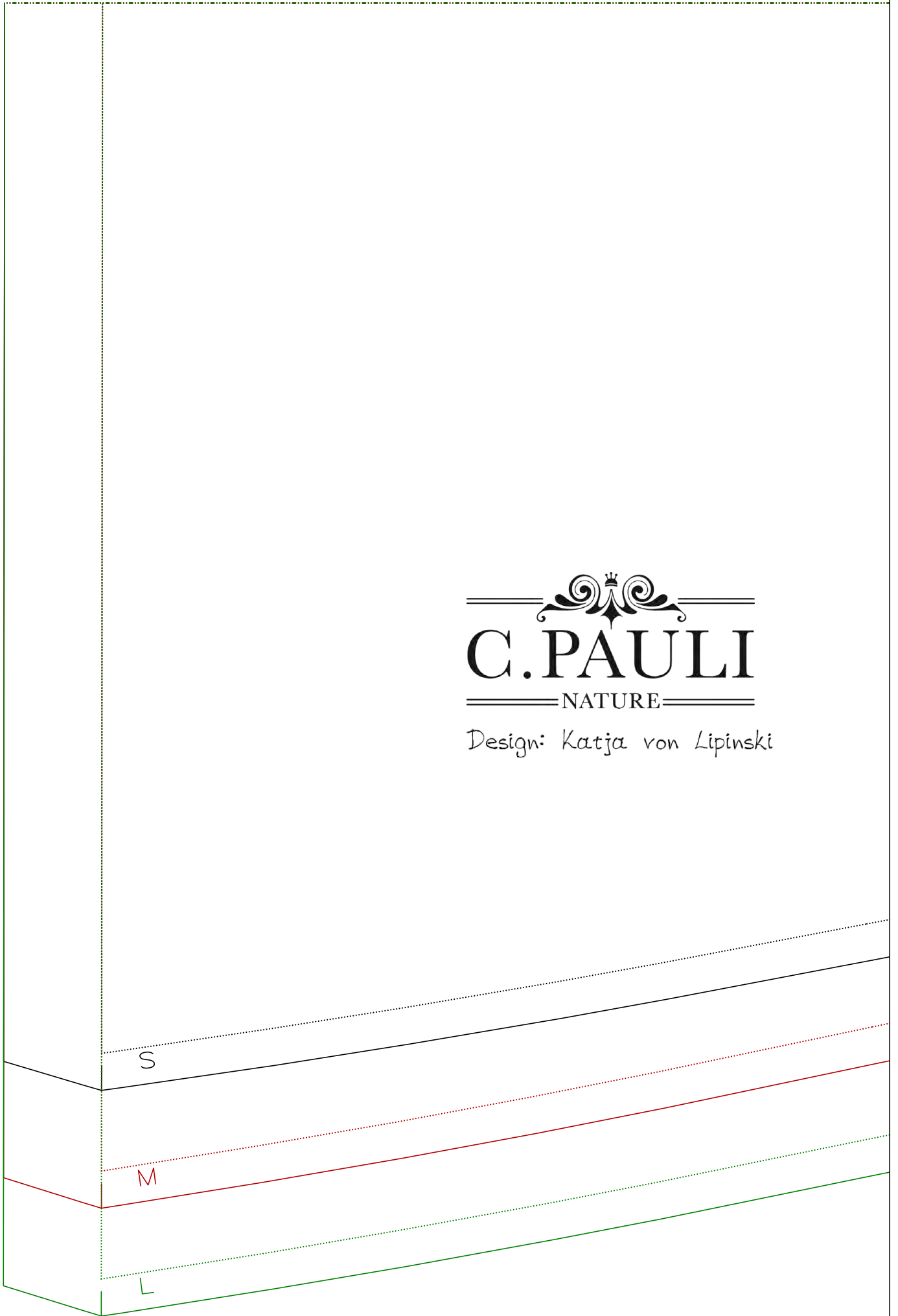
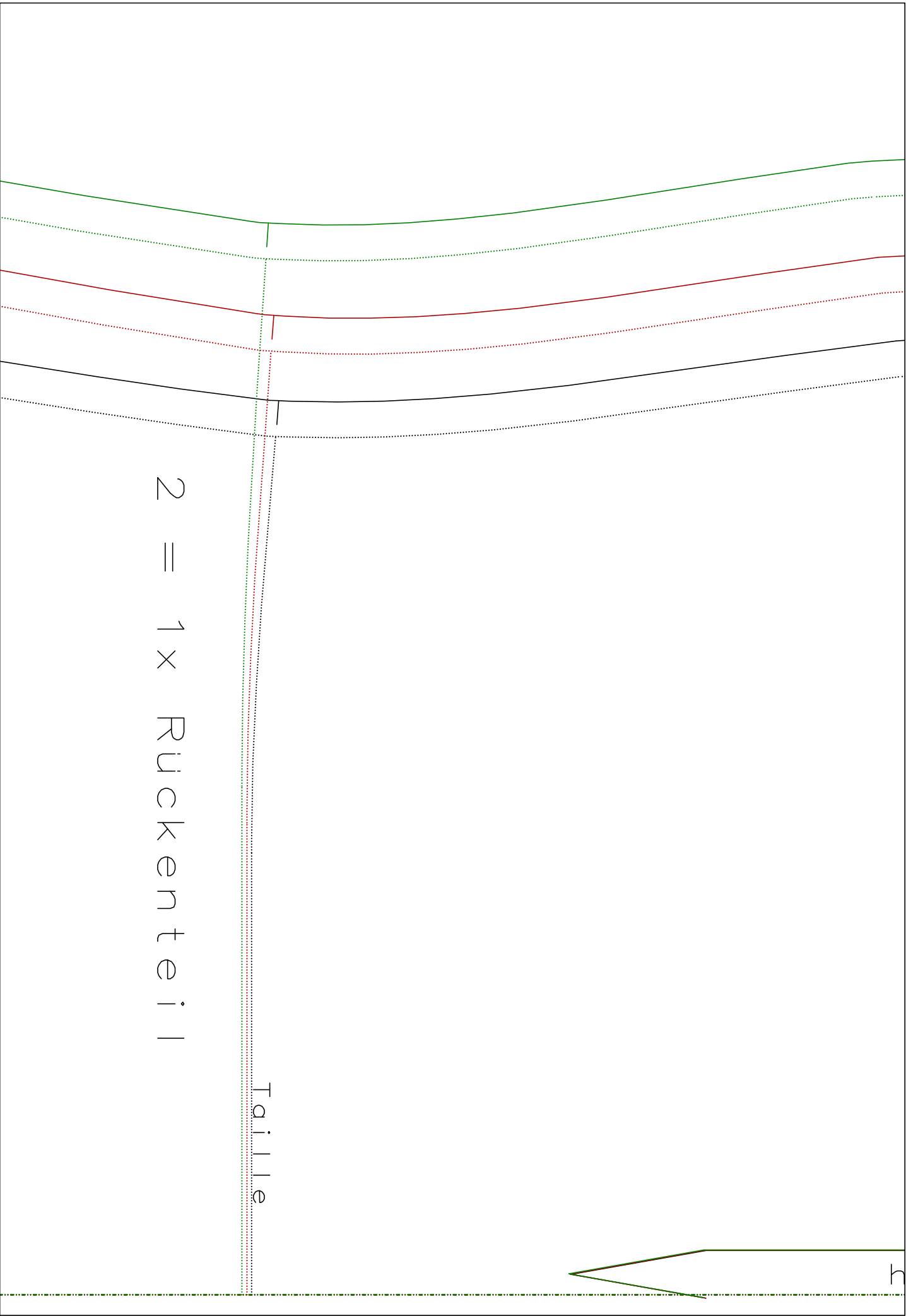




C. PAULI
NATURE

Design: Katja von Lipinski





2 = 1x Ruckenteil

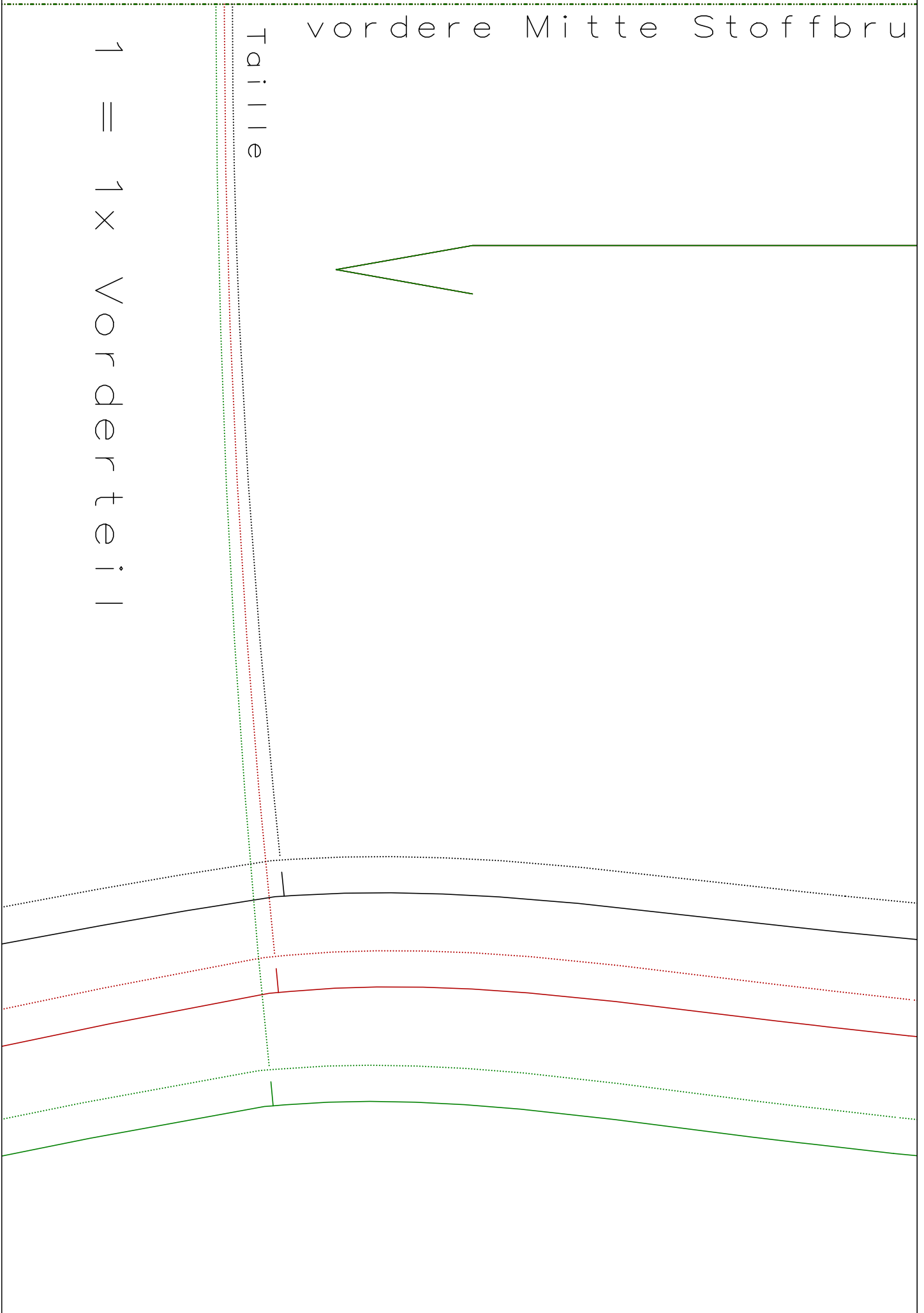
Taille

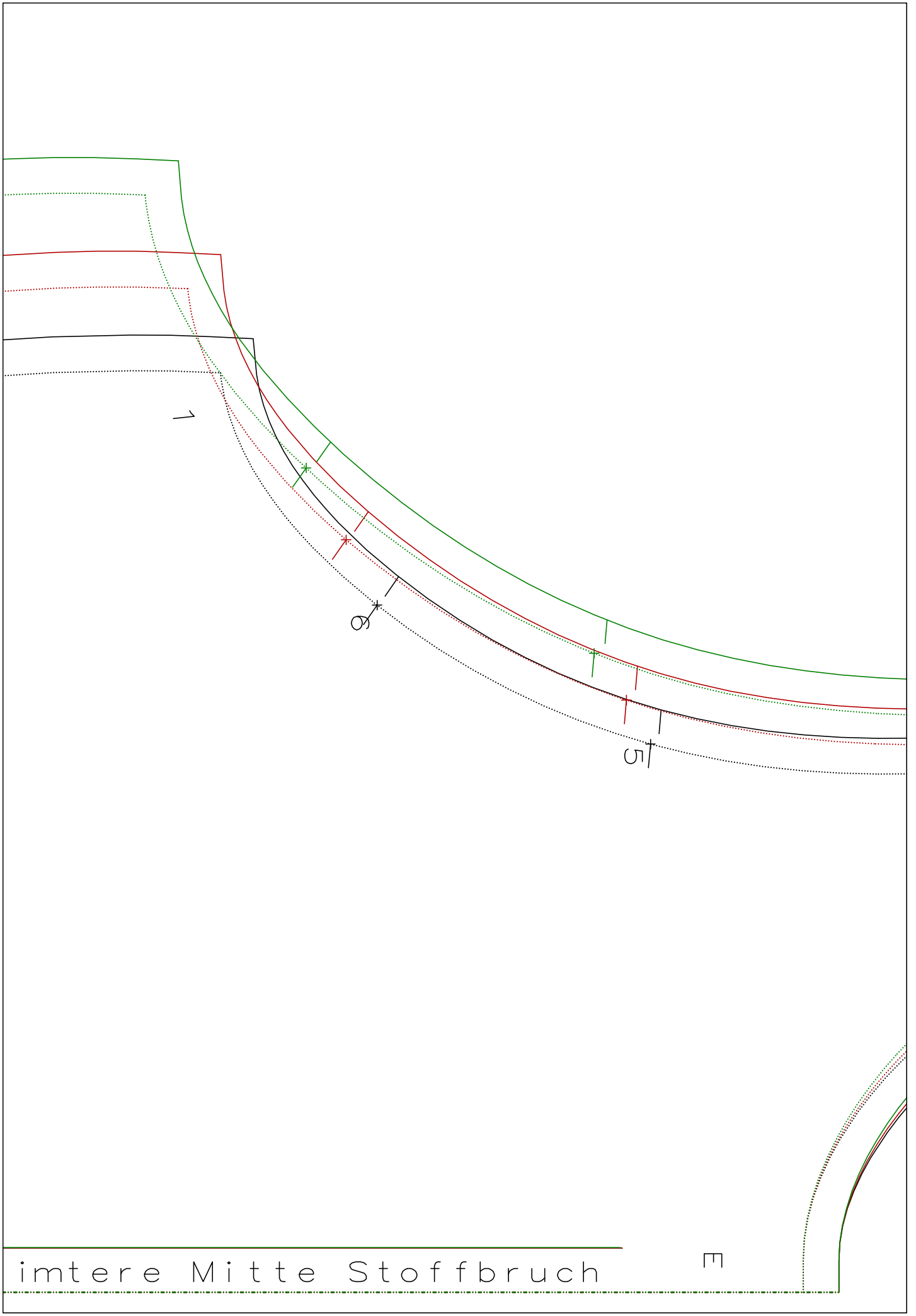
h

vordere Mitte Stoffbru

Taille

1 = 1x Vorder teil



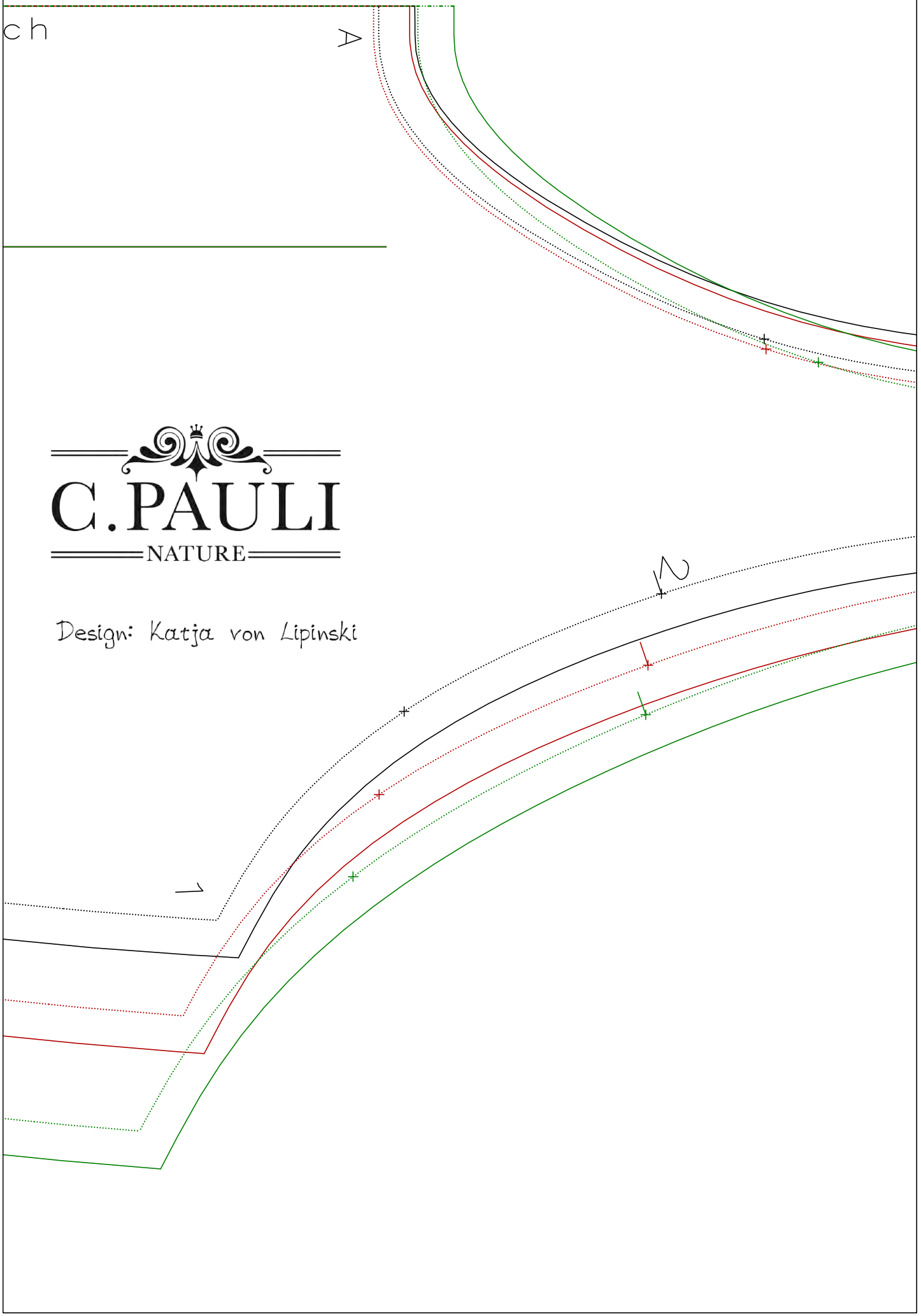


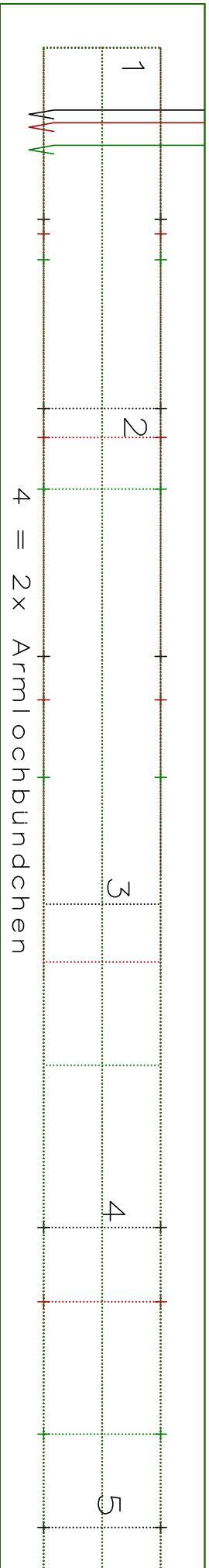
ch

A

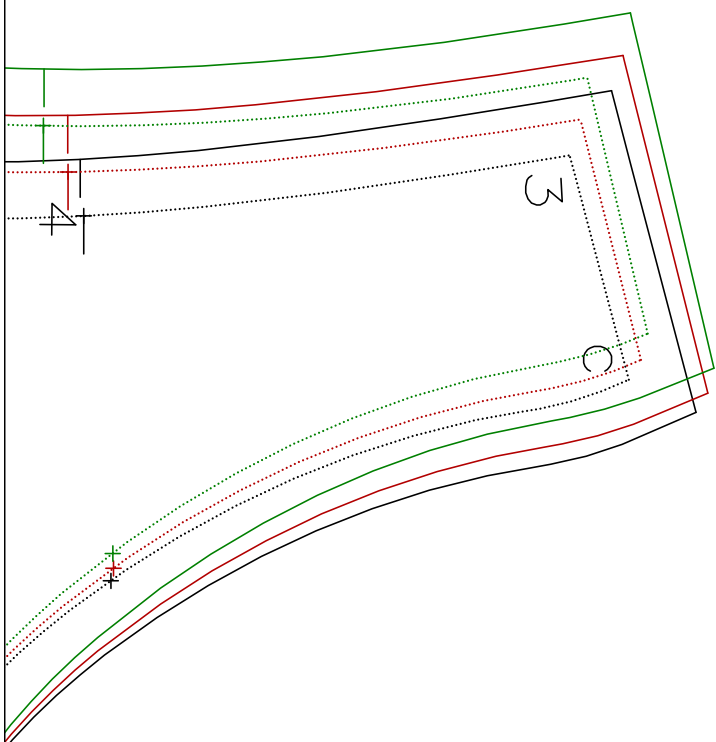
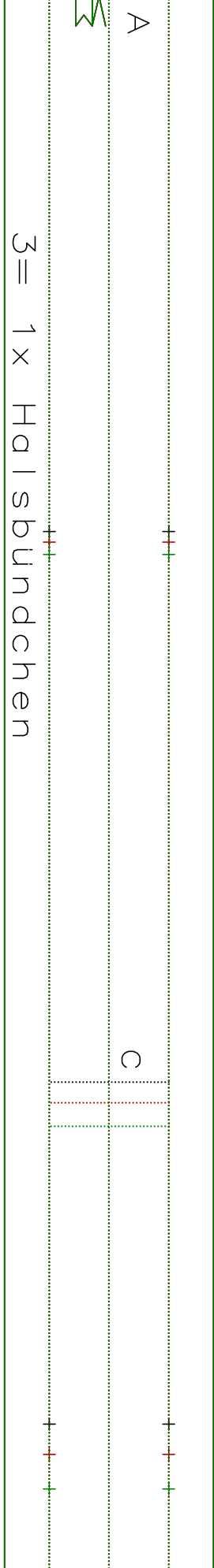

C. PAULI
NATURE

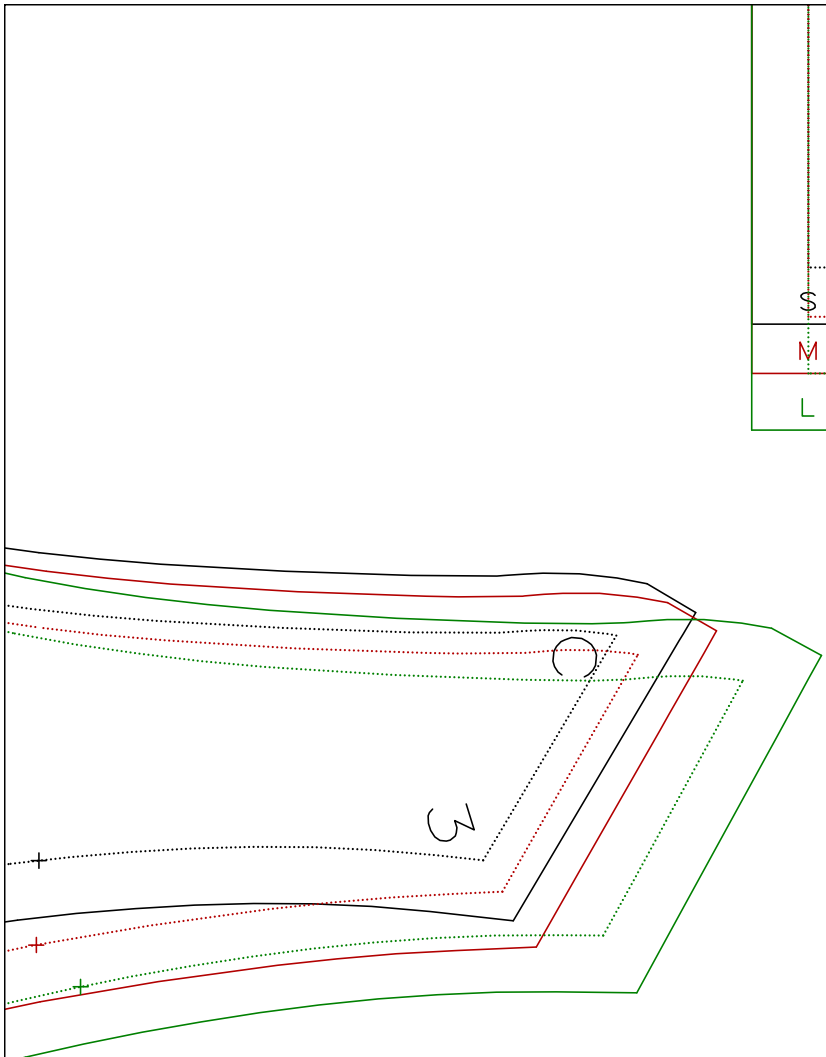
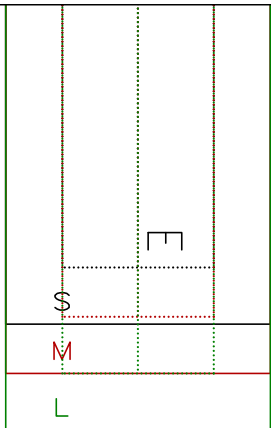
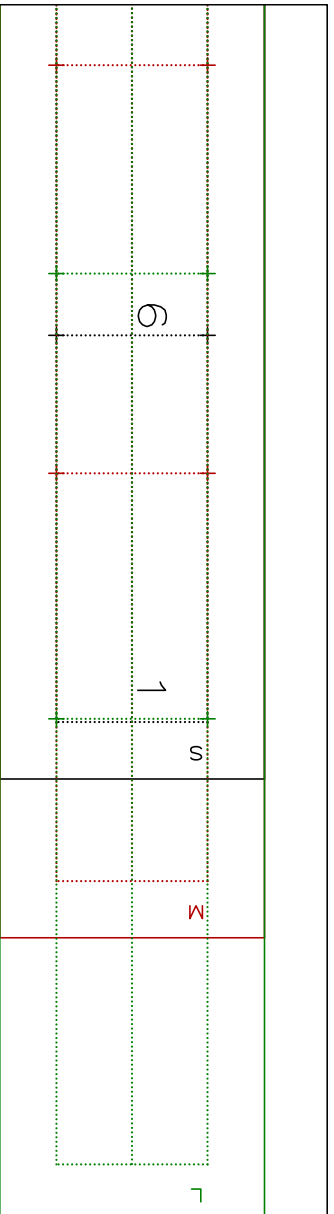
Design: Katja von Lipinski





Stoffbruch





Zur eigenen Sicherheit:
 Kontrollfenster nachmessen!
 Seitenlänge 10 cm

S

M

L