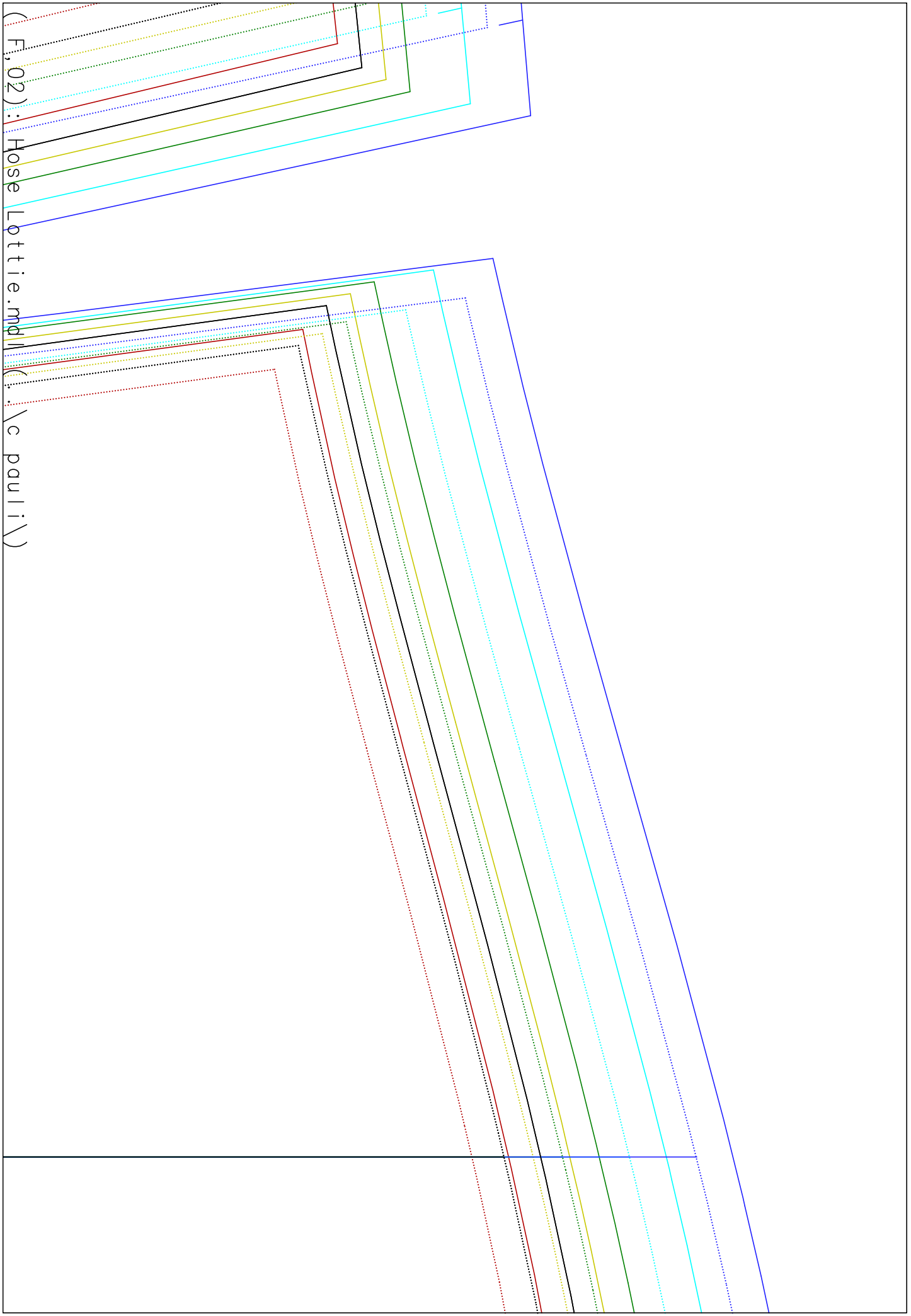
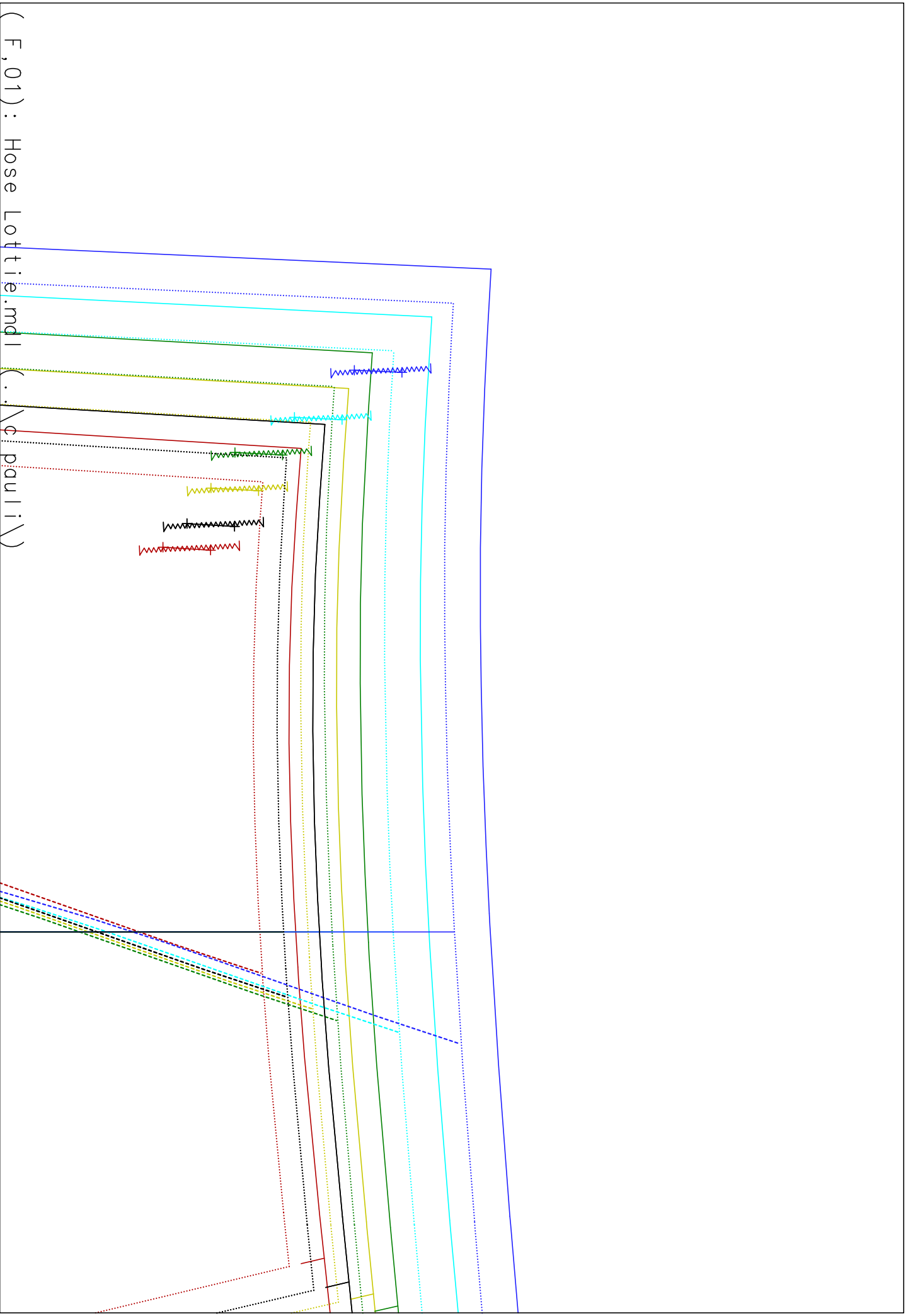


(F, 03) : Hose Lottie.ndl (. \ c pauli x)

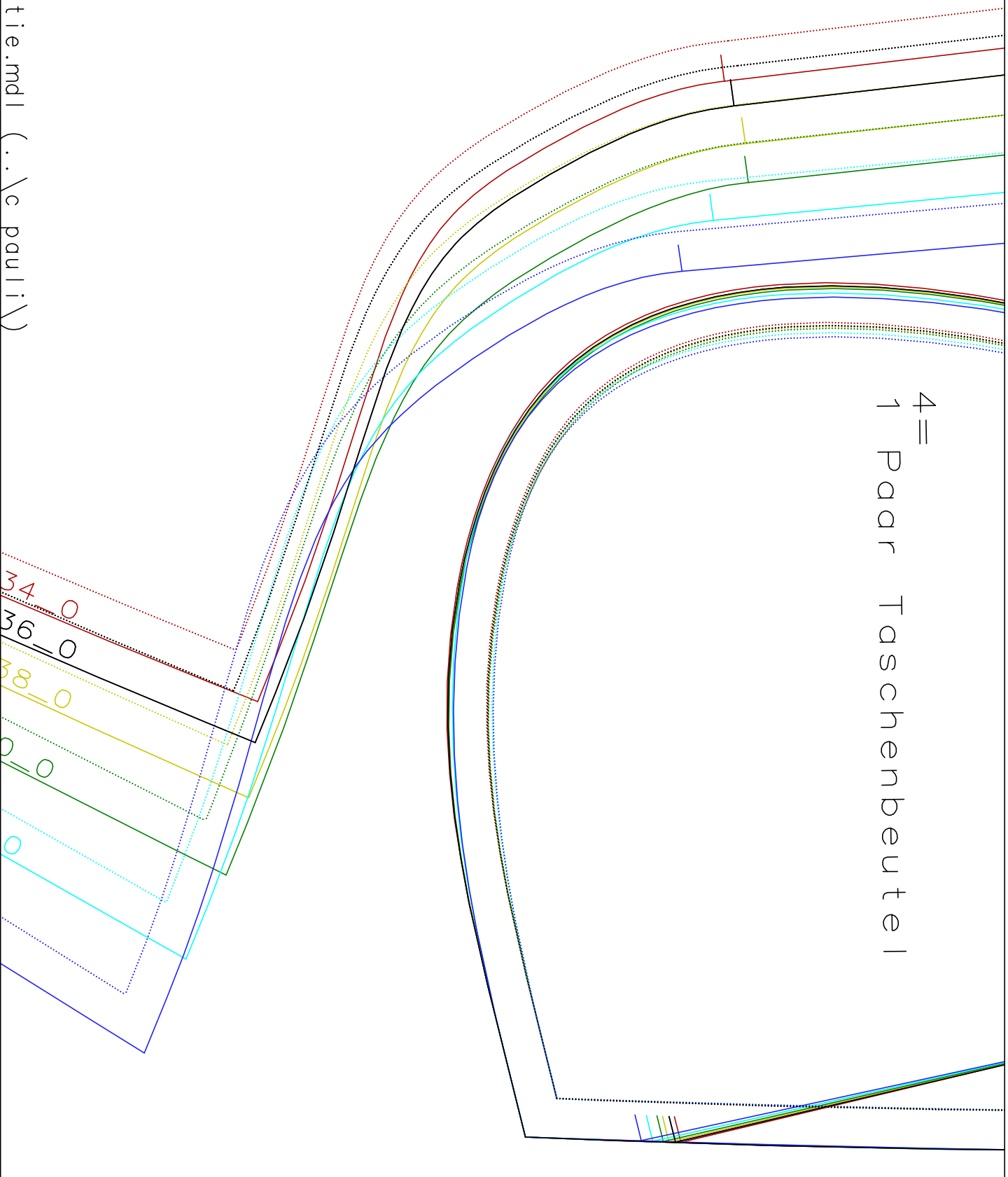


(F, 02) : Hose Lottie.mdl
(: . \c pauli \)

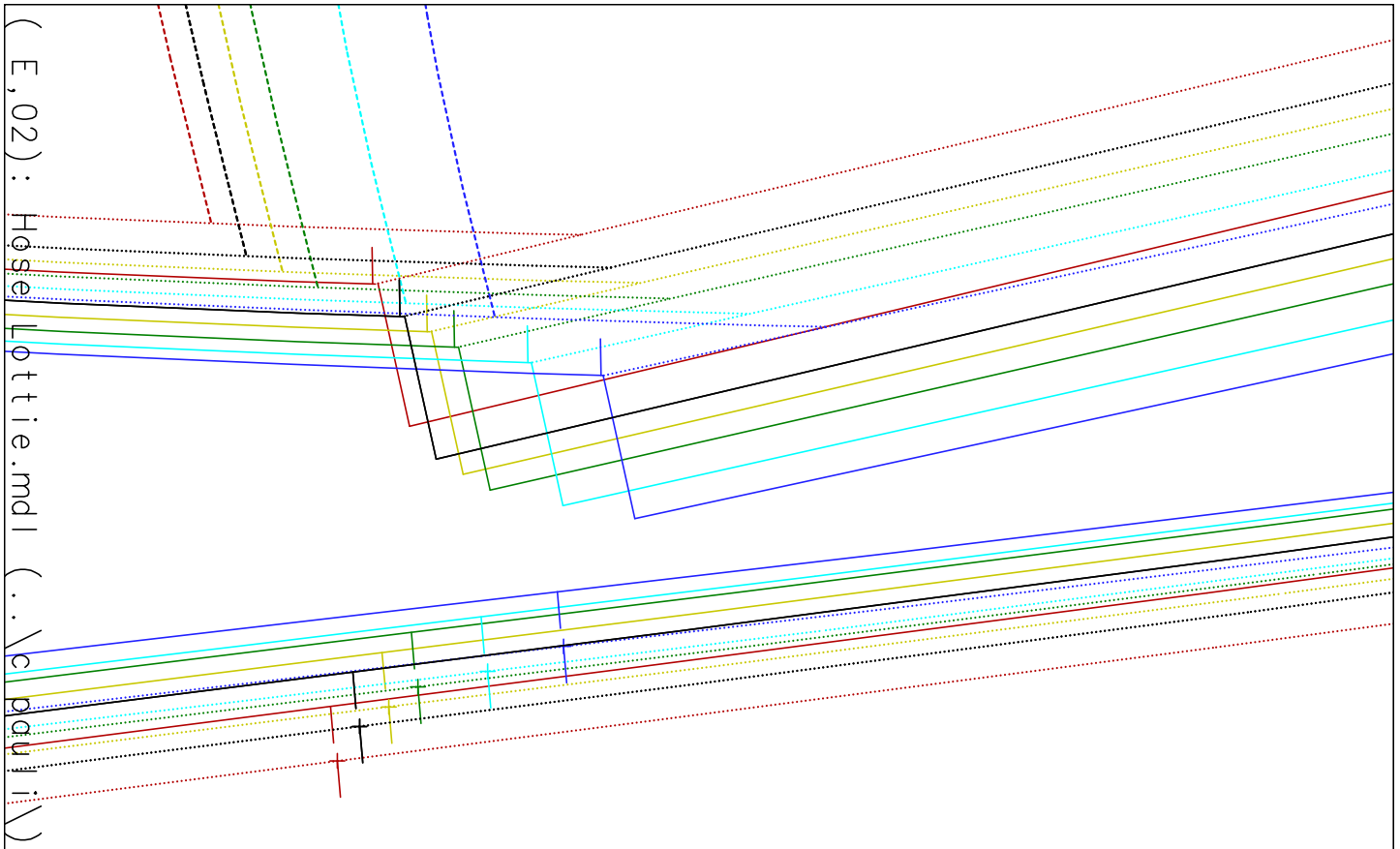


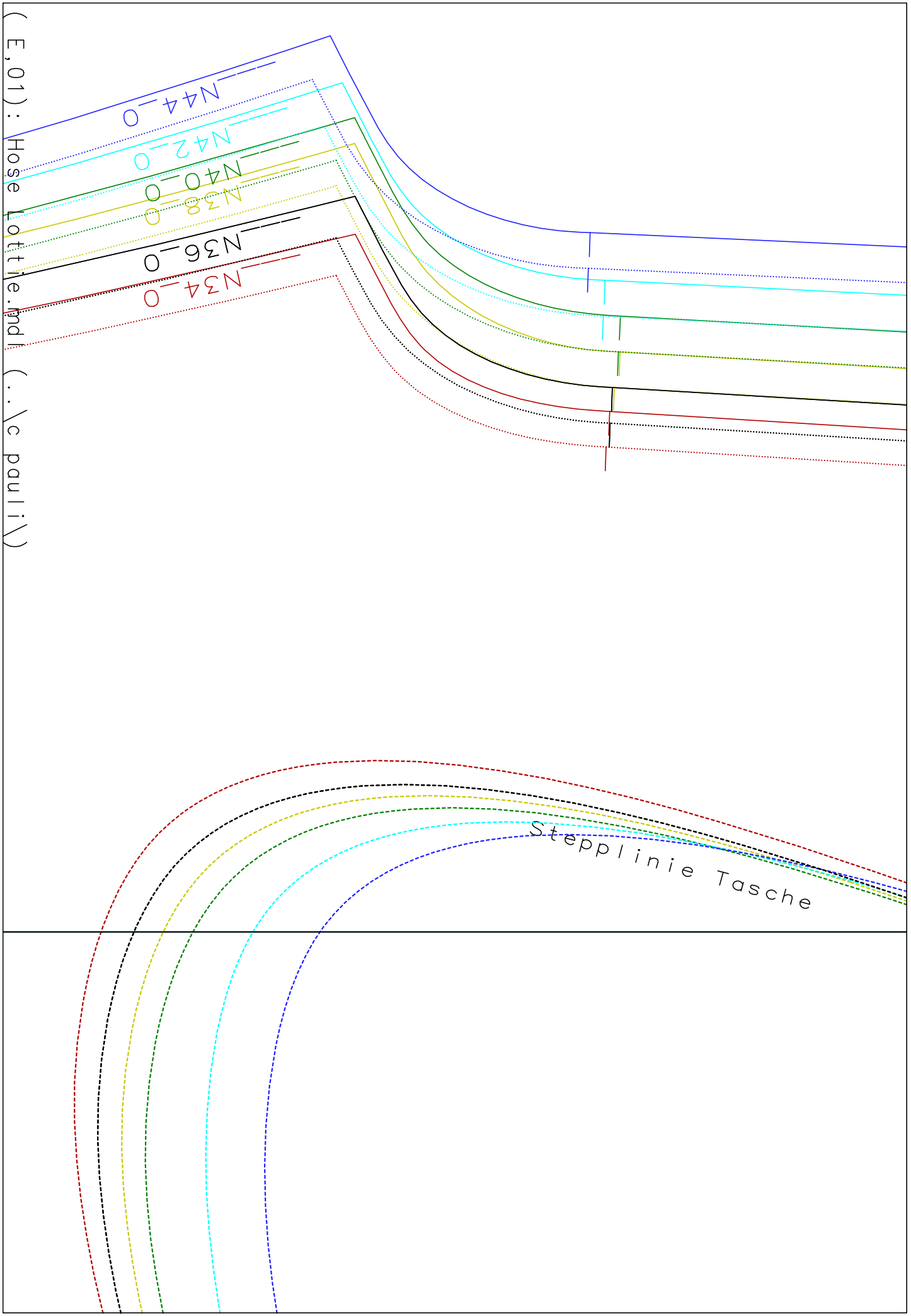
(F, 01) : Hose Lottie.mdl (. . \c pauli \)

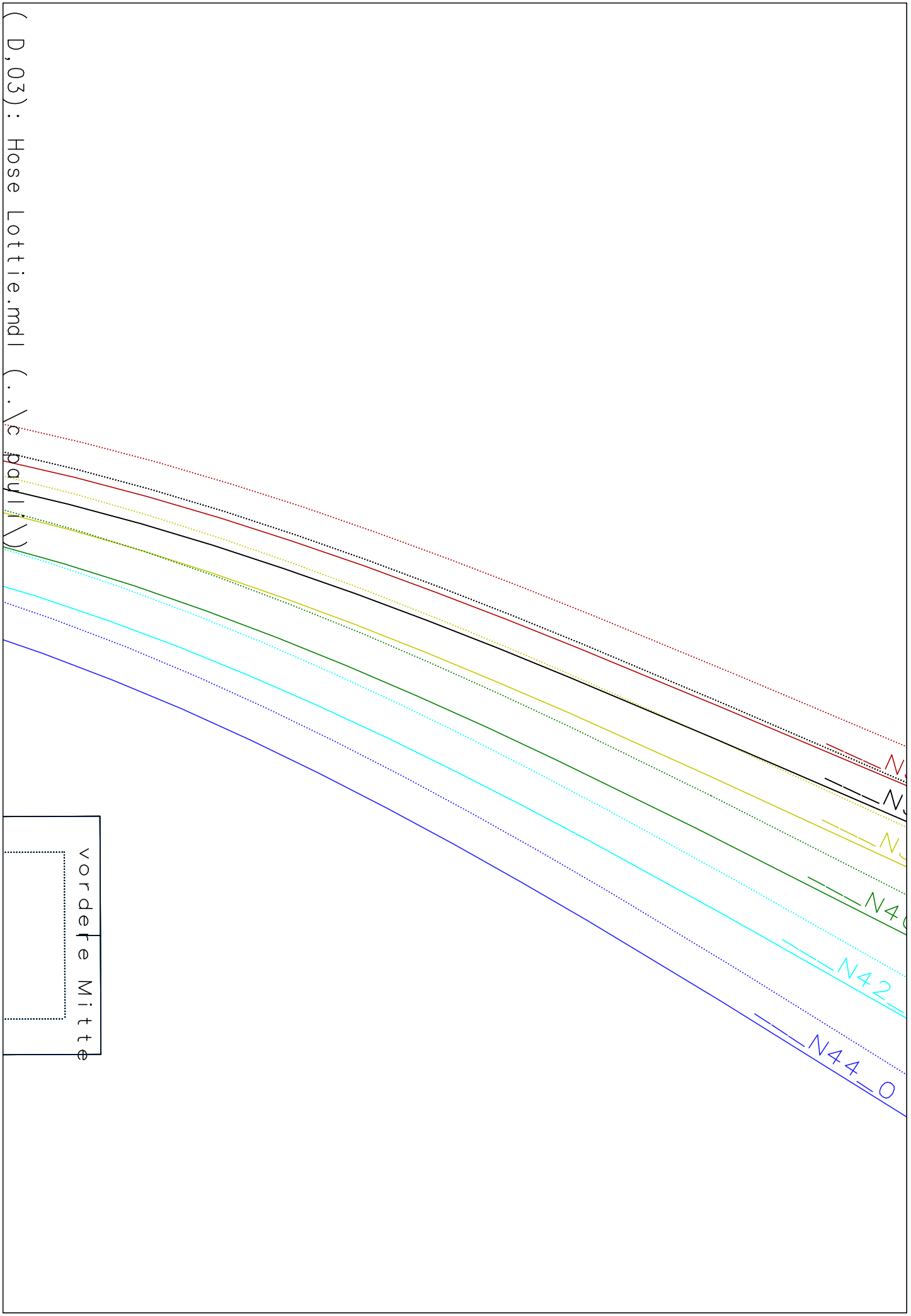
4=
1 Paar Taschenbeute |

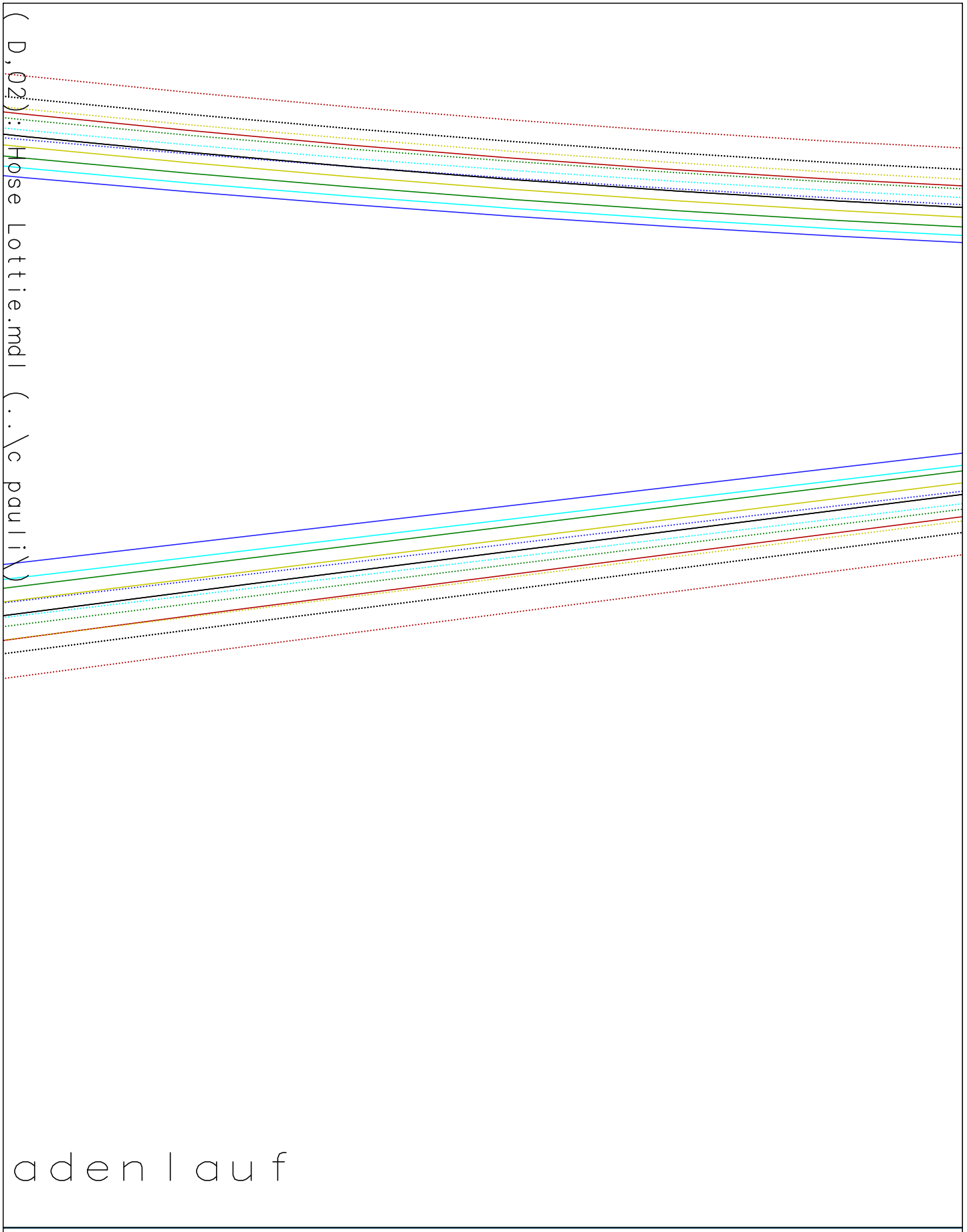


(E,03) : Hose Lottie.mdl (..\c pauli\)

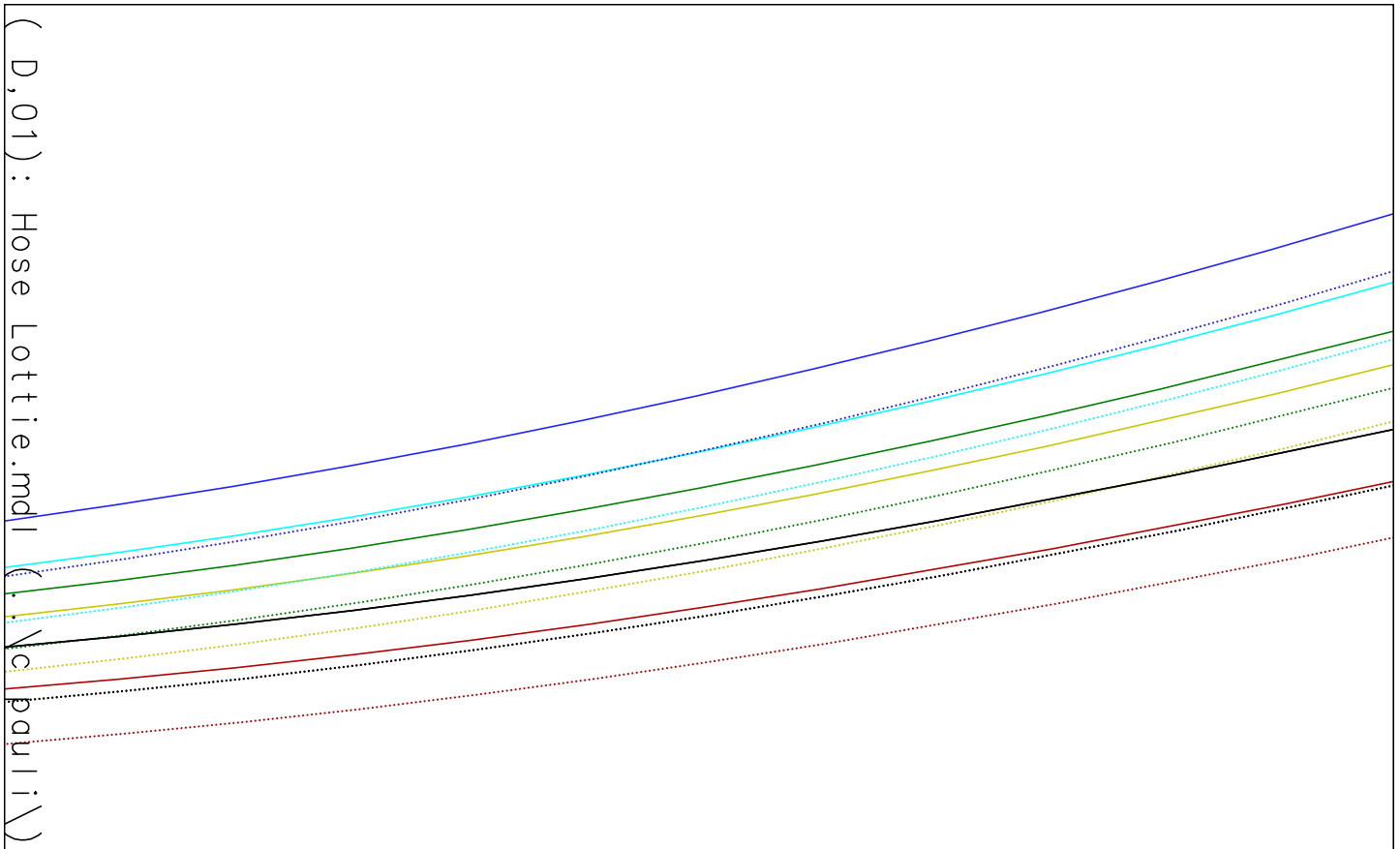






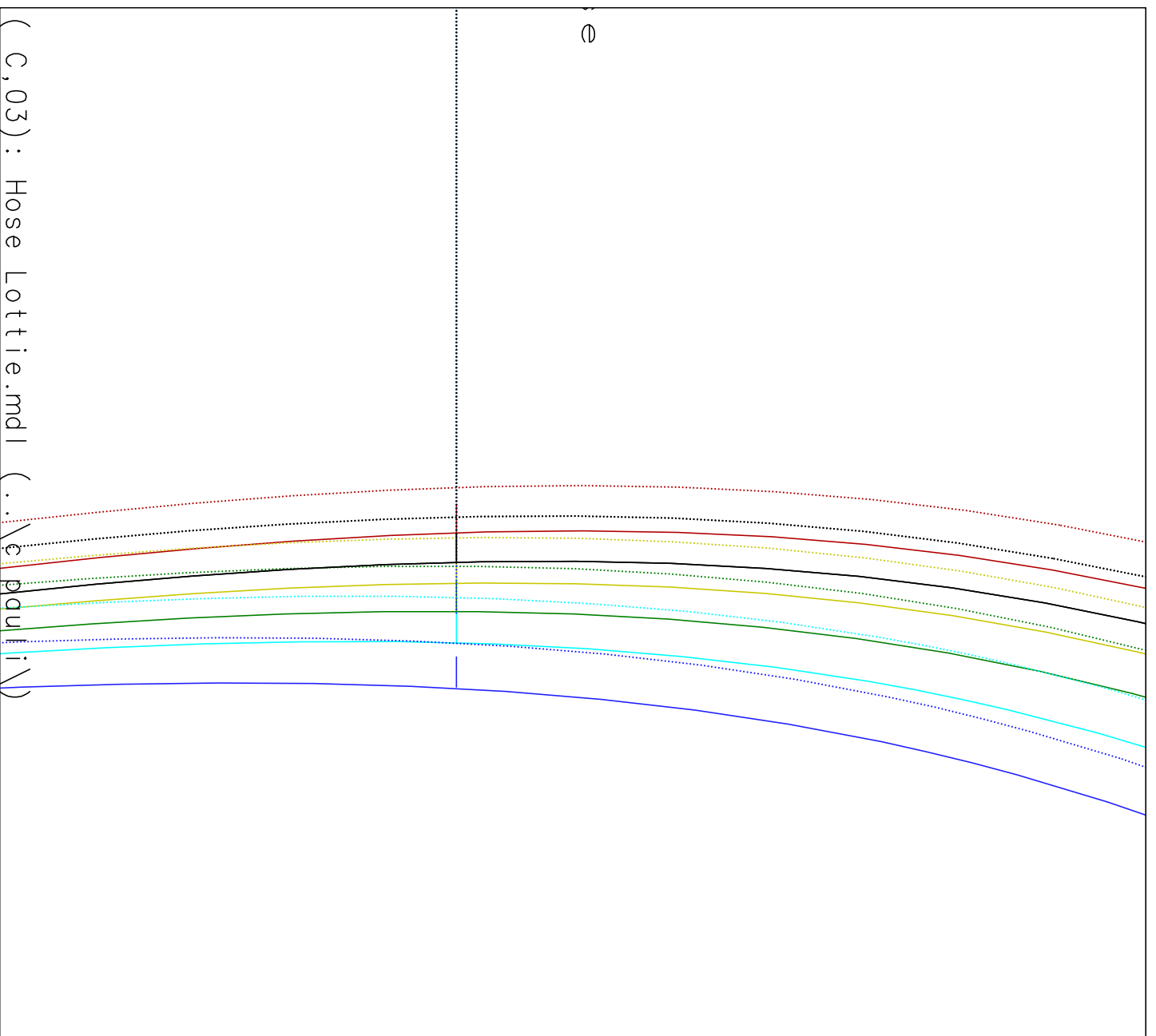


adenlauf



lauf

3 =
1 Paar Innenbund

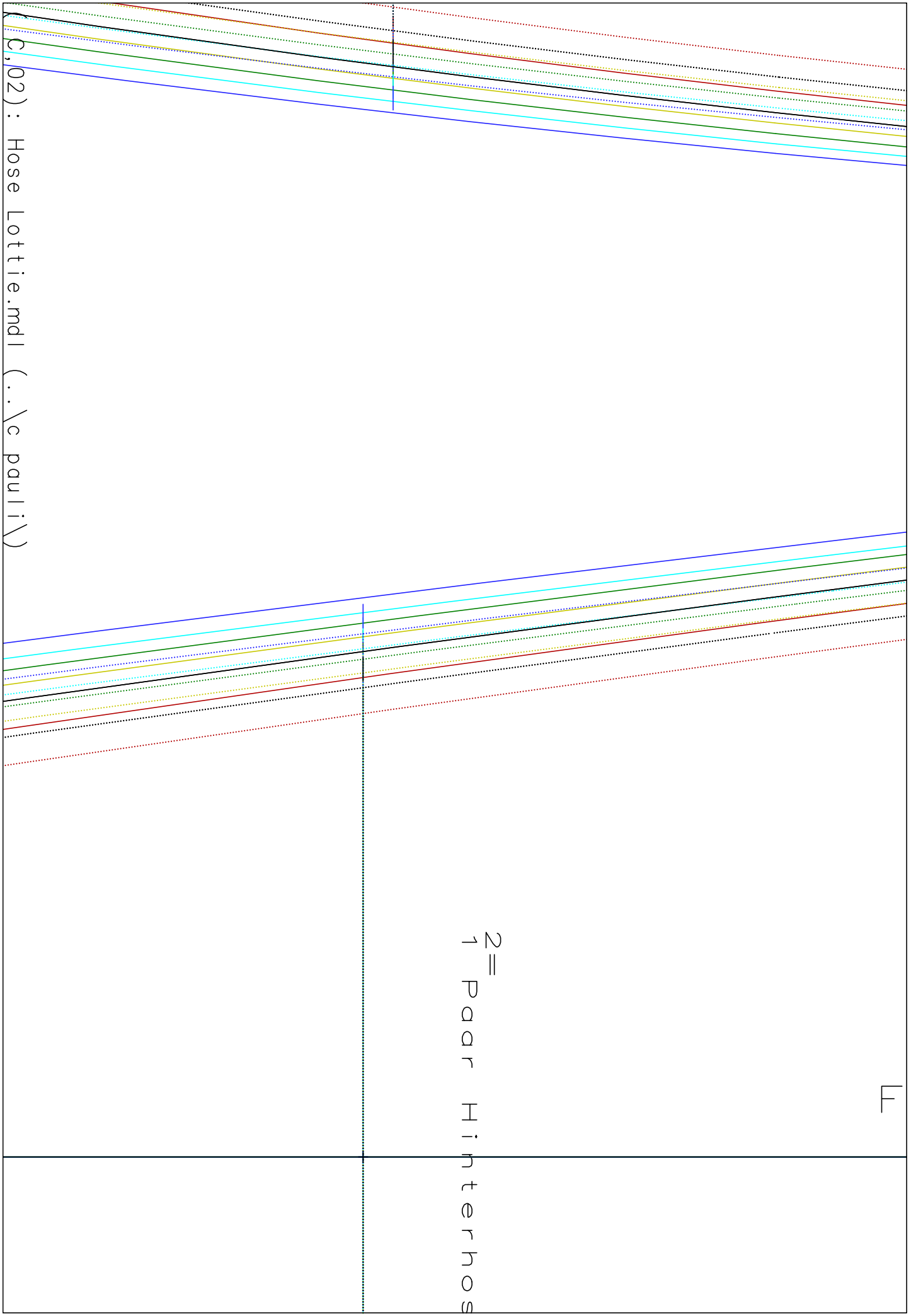


0

(c, 03) : Hose Lottie.mdl (.. \c.pauli:\)

E

$z = 1$ Paar Hinterhos

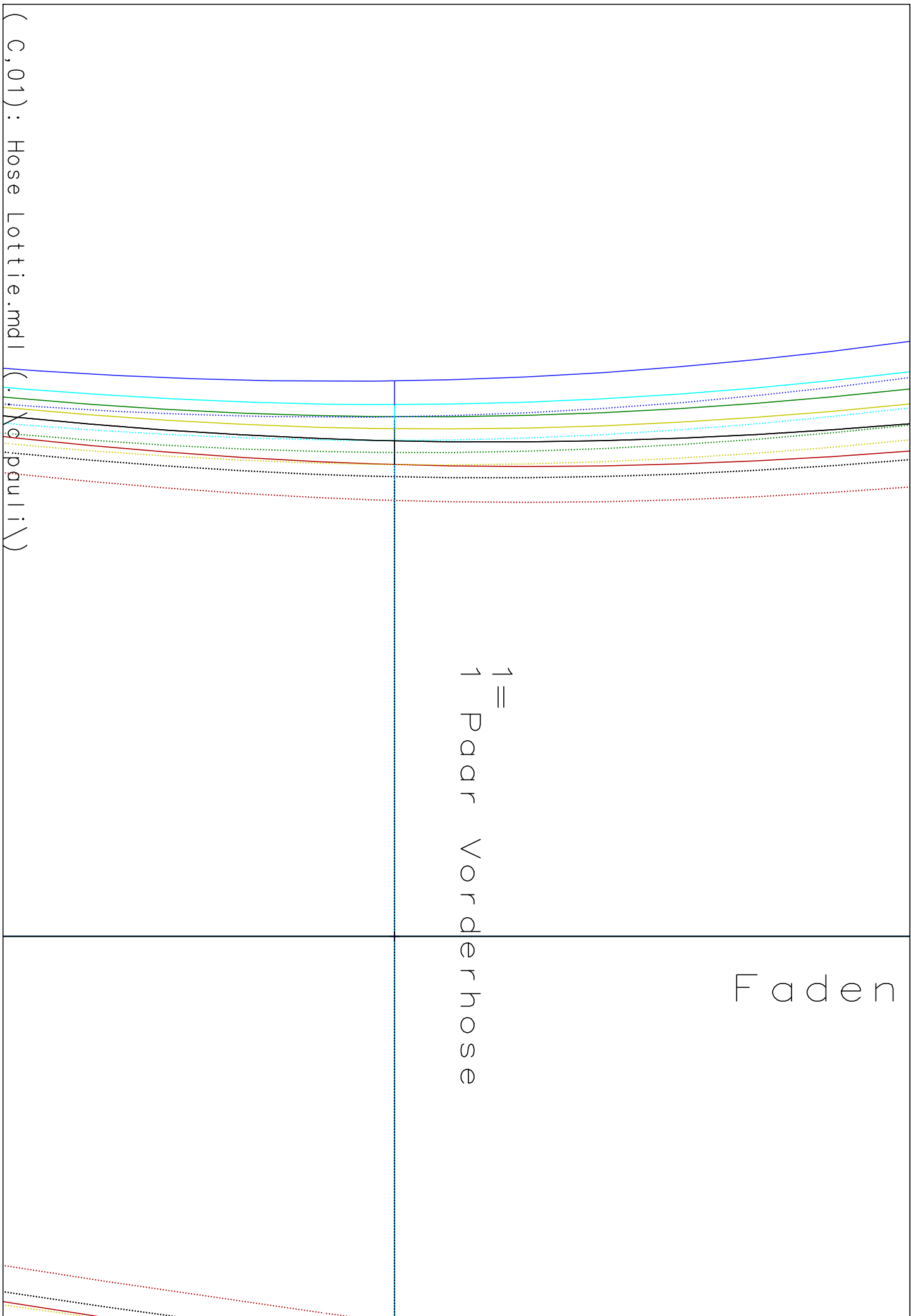


(c,02) : Hose Lottie.mdl (..\c pauli\)

Copyright c.pauli.de

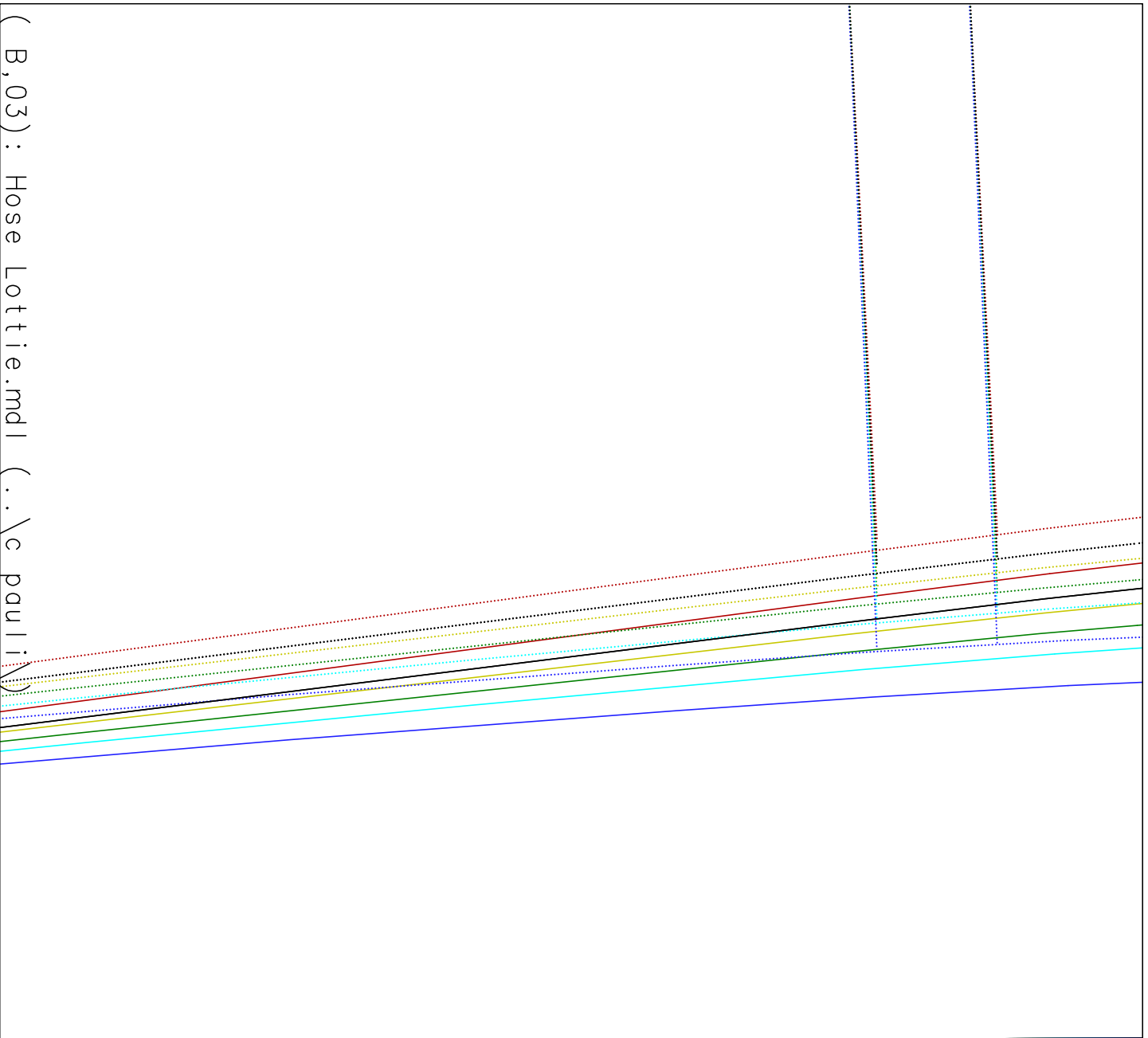
F a d e n

1 =
Paar Vorderhose



(c, 01) : Hose Lottie.mdl
(c, 01) : Hose Lottie.mdl

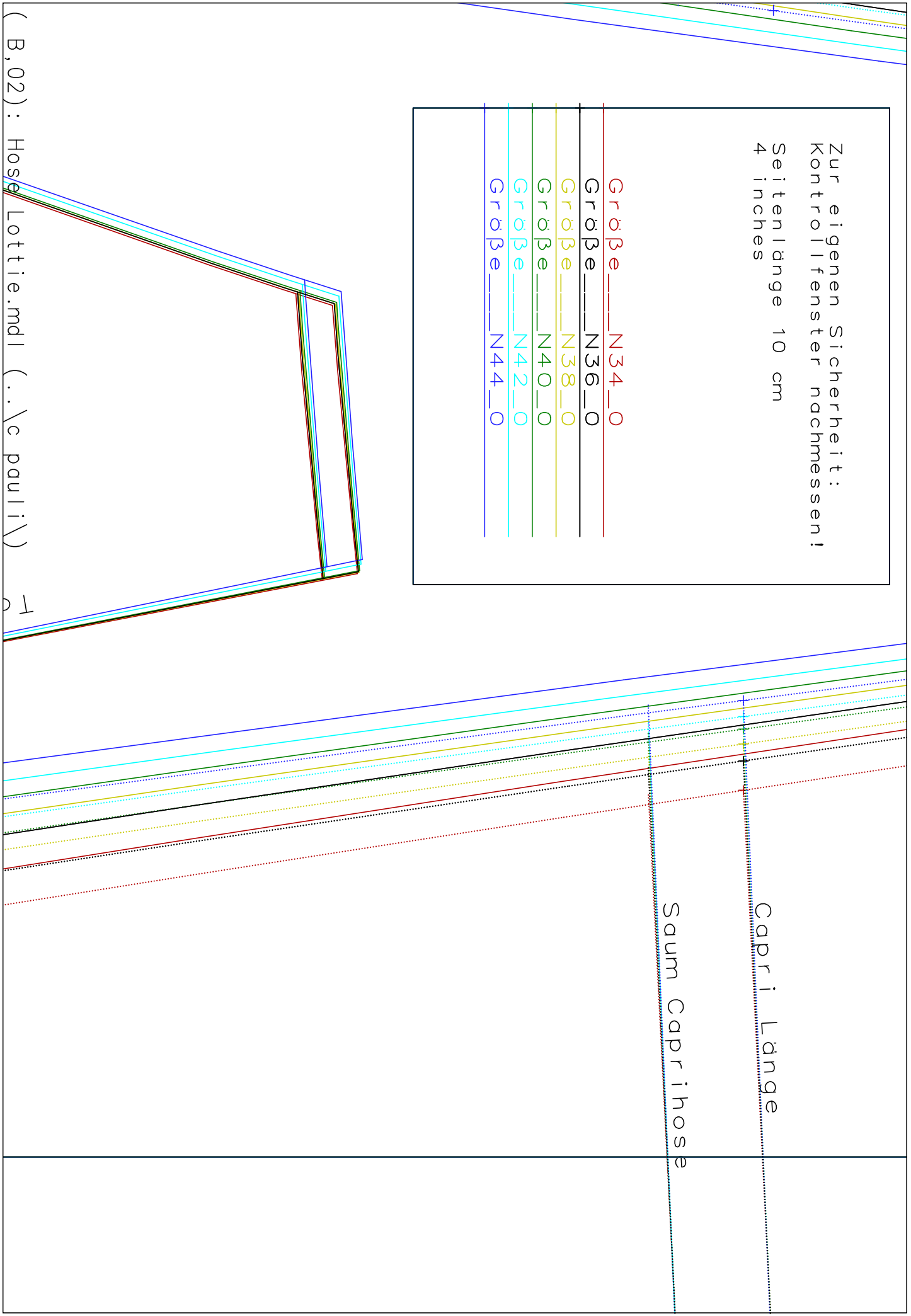
Seitenh



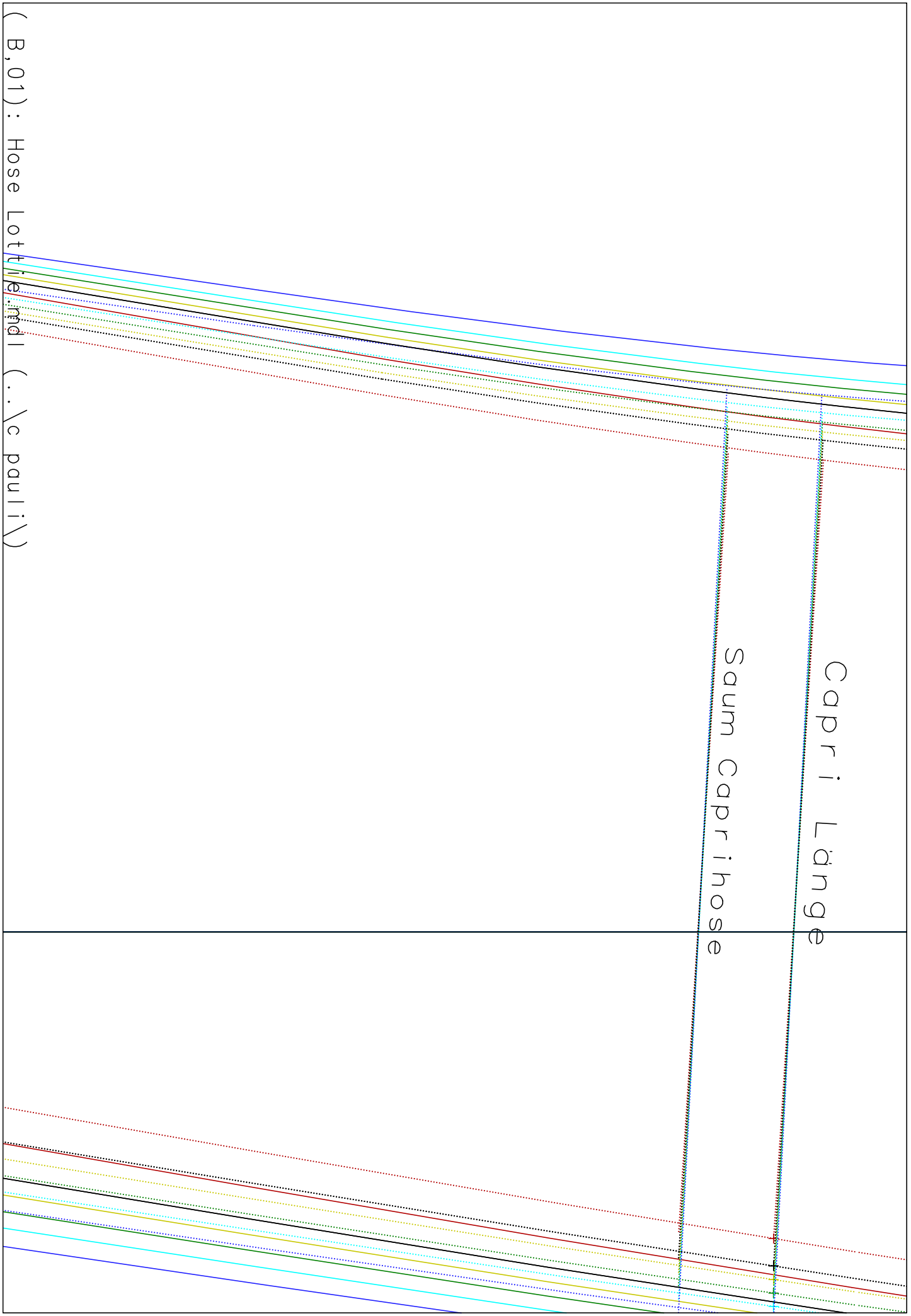
(B, 03) : Hose Lottie.mdl (.. \c pauli \)

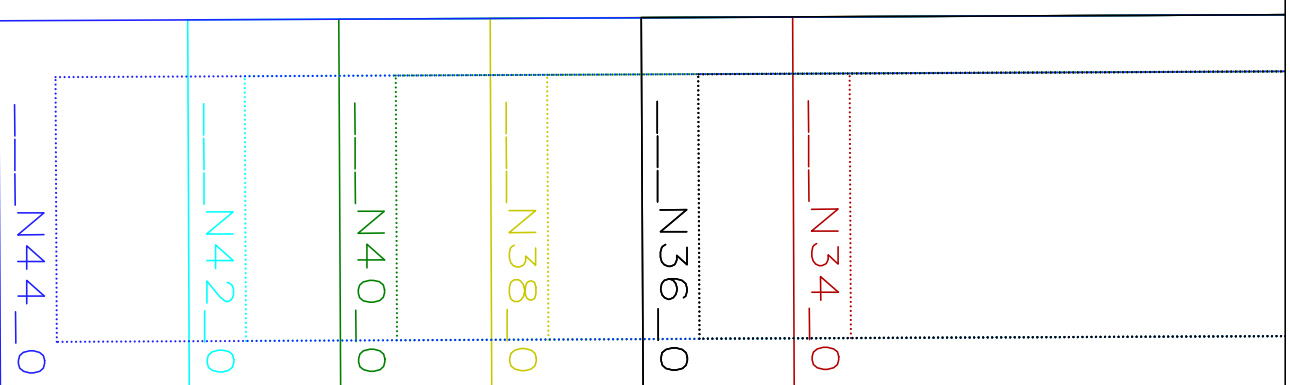
Zur eigenen Sicherheit:
Kontrollfenster nachmessen!
Seitenlänge 10 cm
4 inches

Größe N34_0
Größe N36_0
Größe N38_0
Größe N40_0
Größe N42_0
Größe N44_0



(B, 02) : Hose Lottie.mdl (..\c pauli\) T

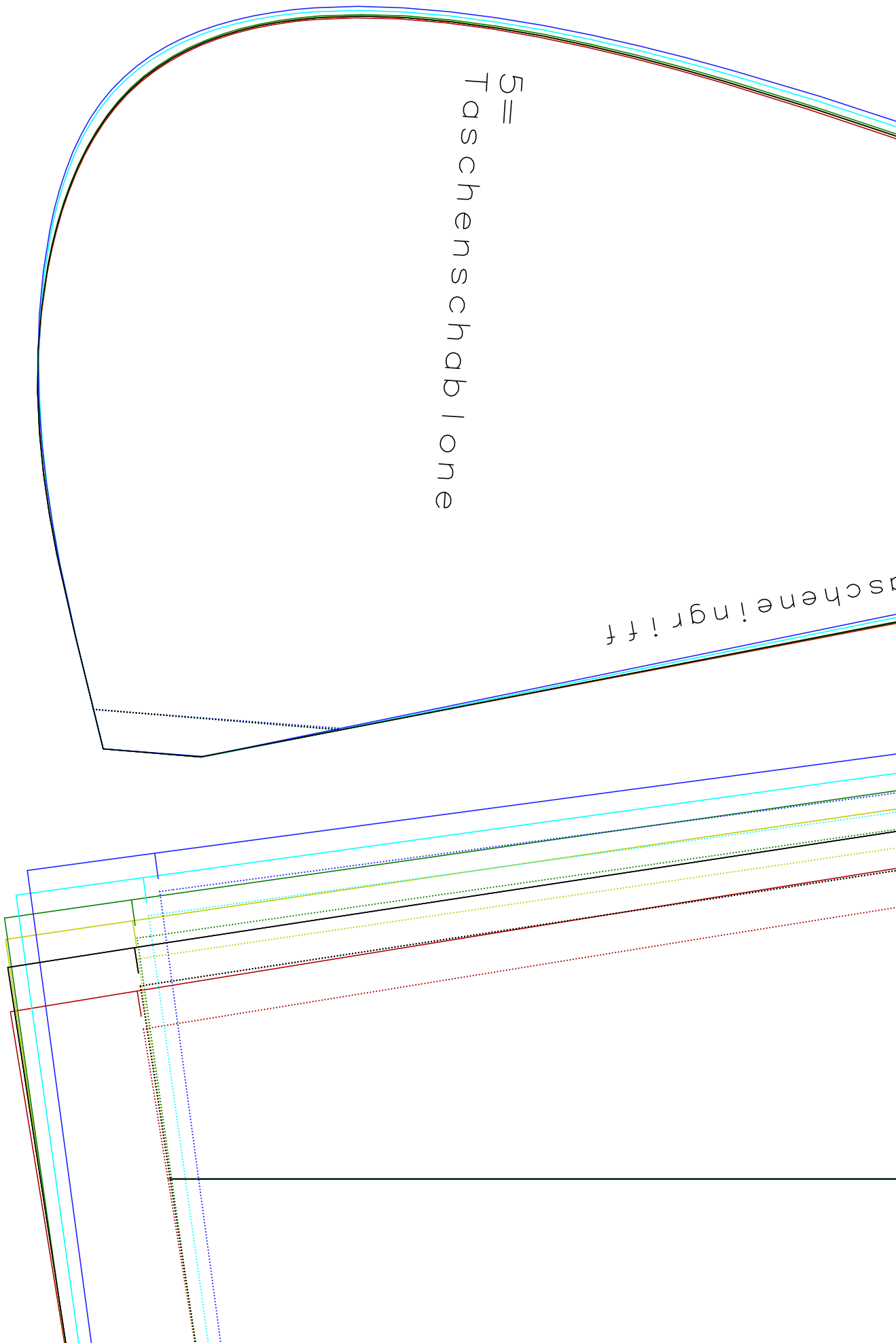




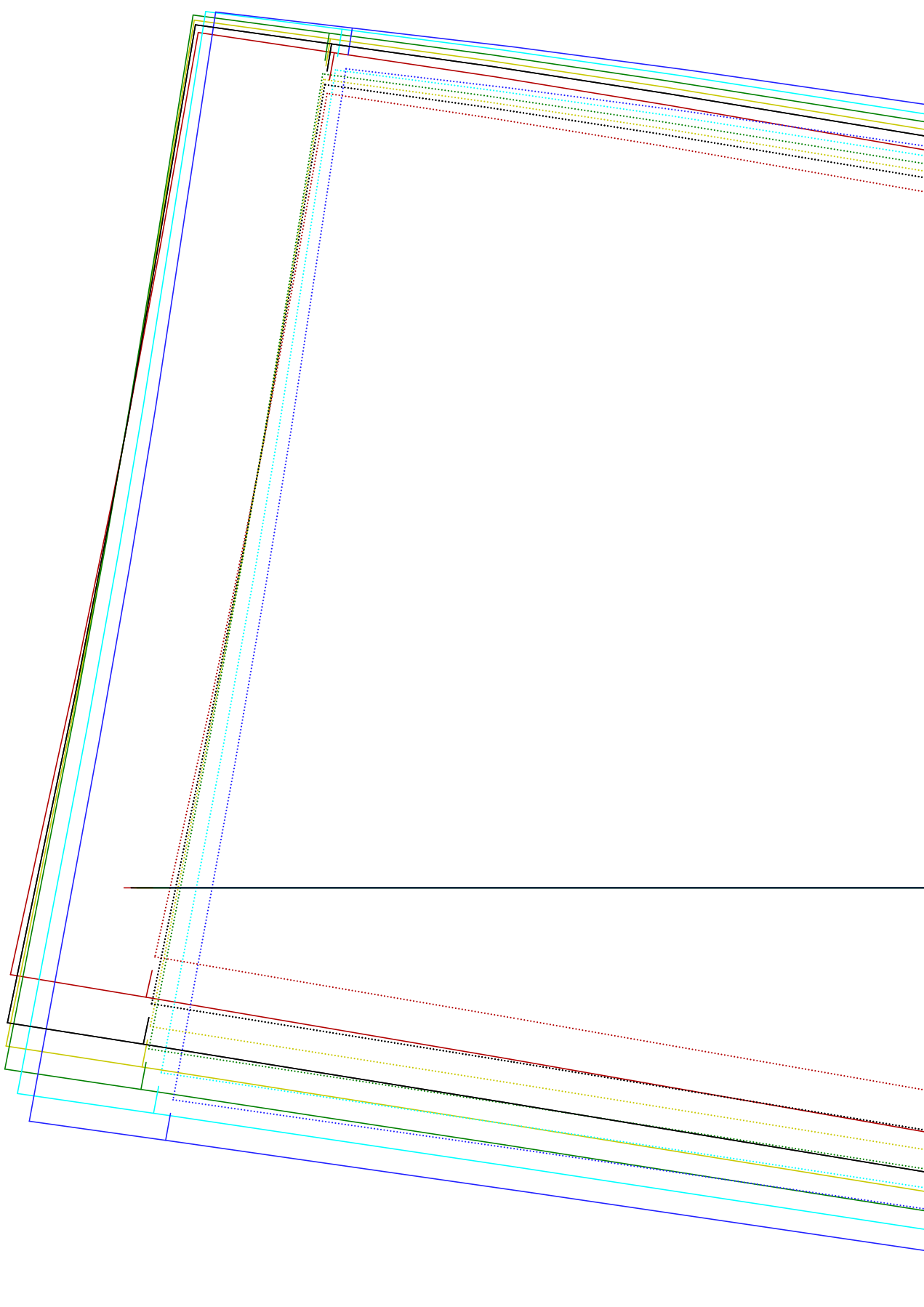
(A,03) : Hose Lottie.mdl (..\c pauli\)

Tascheneingriff

5=
Taschenschablone



(A,02) : Hose Lottie.mdl (..\c pauli\)



(A,01): Hose Lottie.mdl (..\c pauli\)