

(C,03): Shirt Lea.mdl (..\c pauli\)

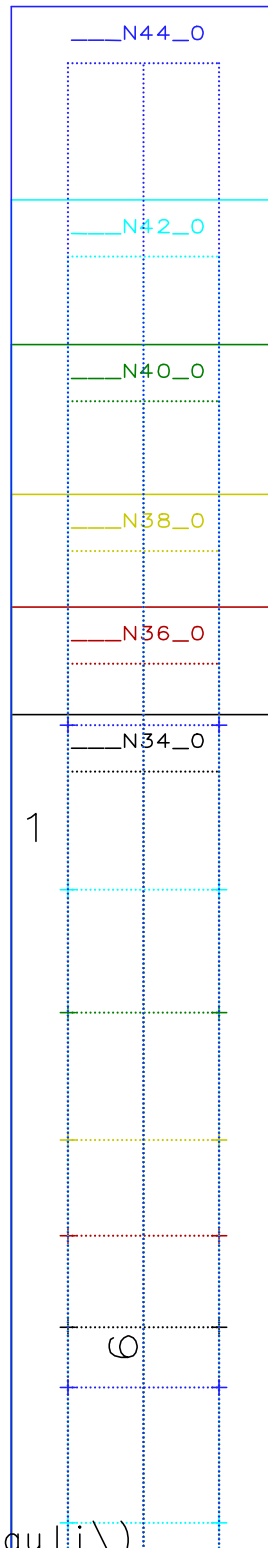
3=

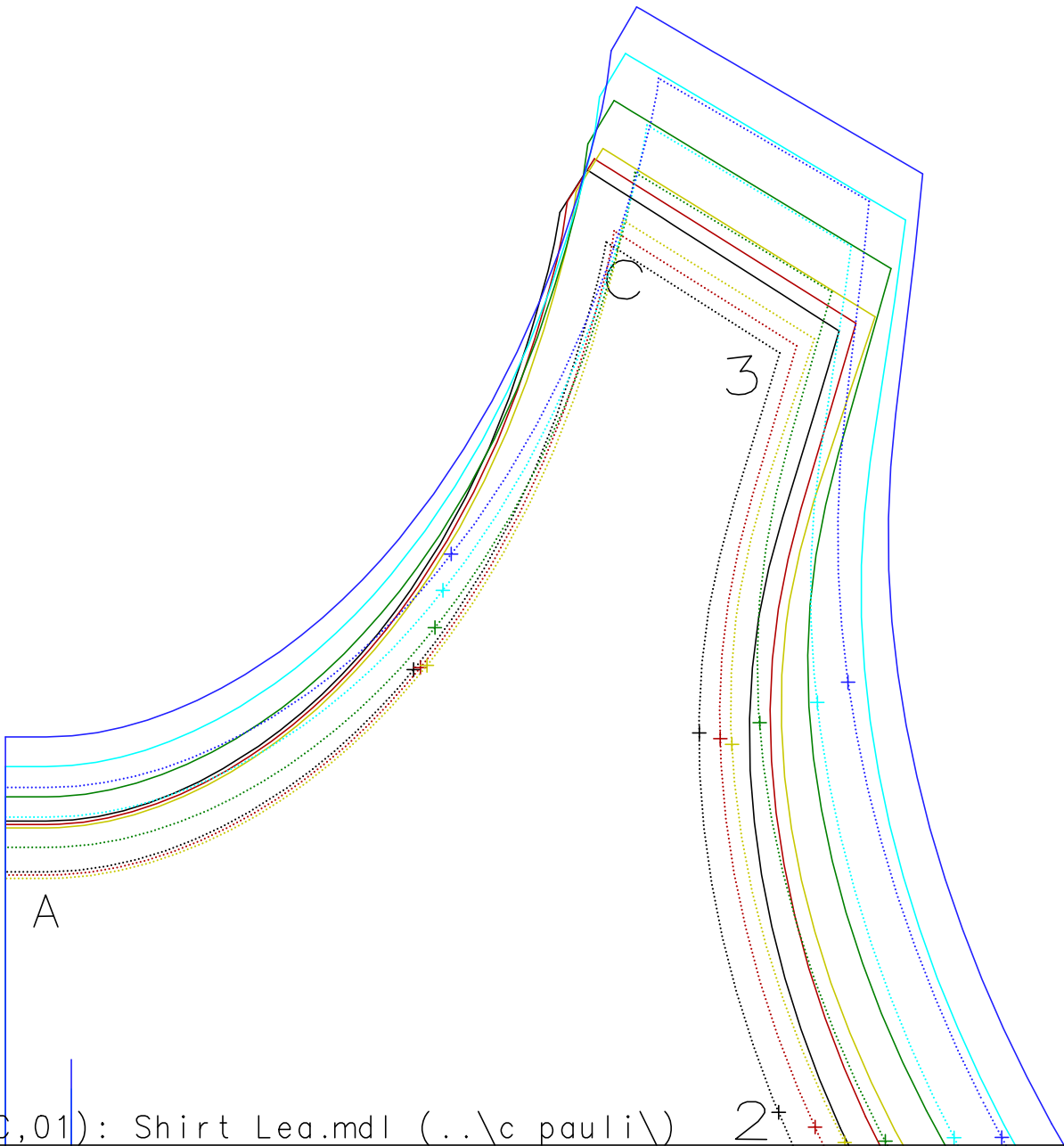
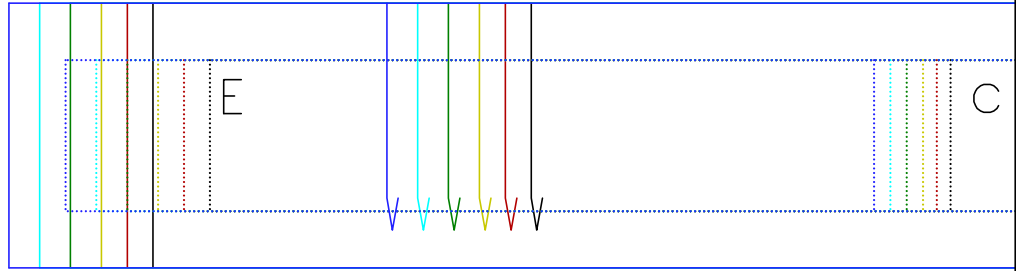
1x Halsbündchen

A



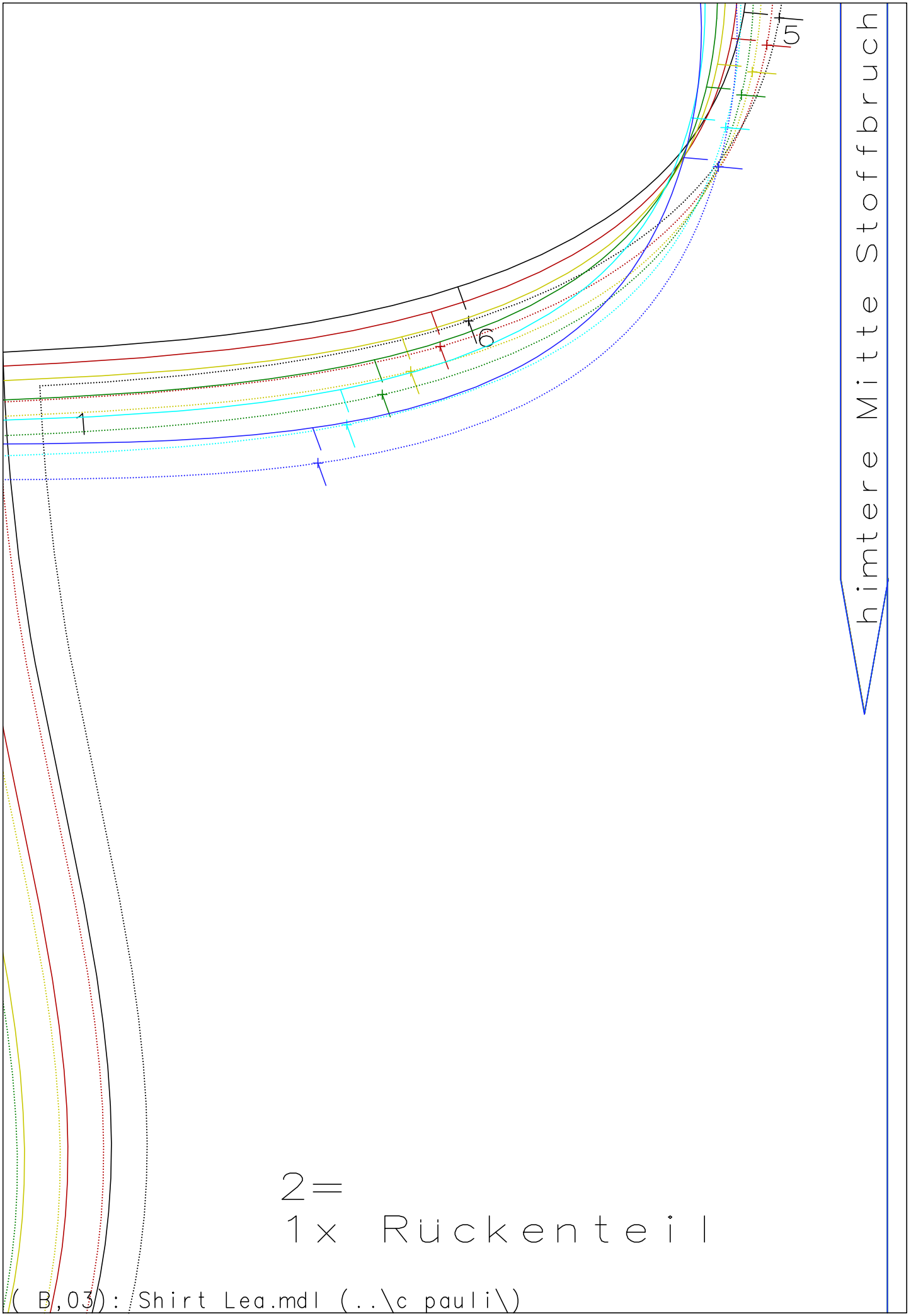
Strick





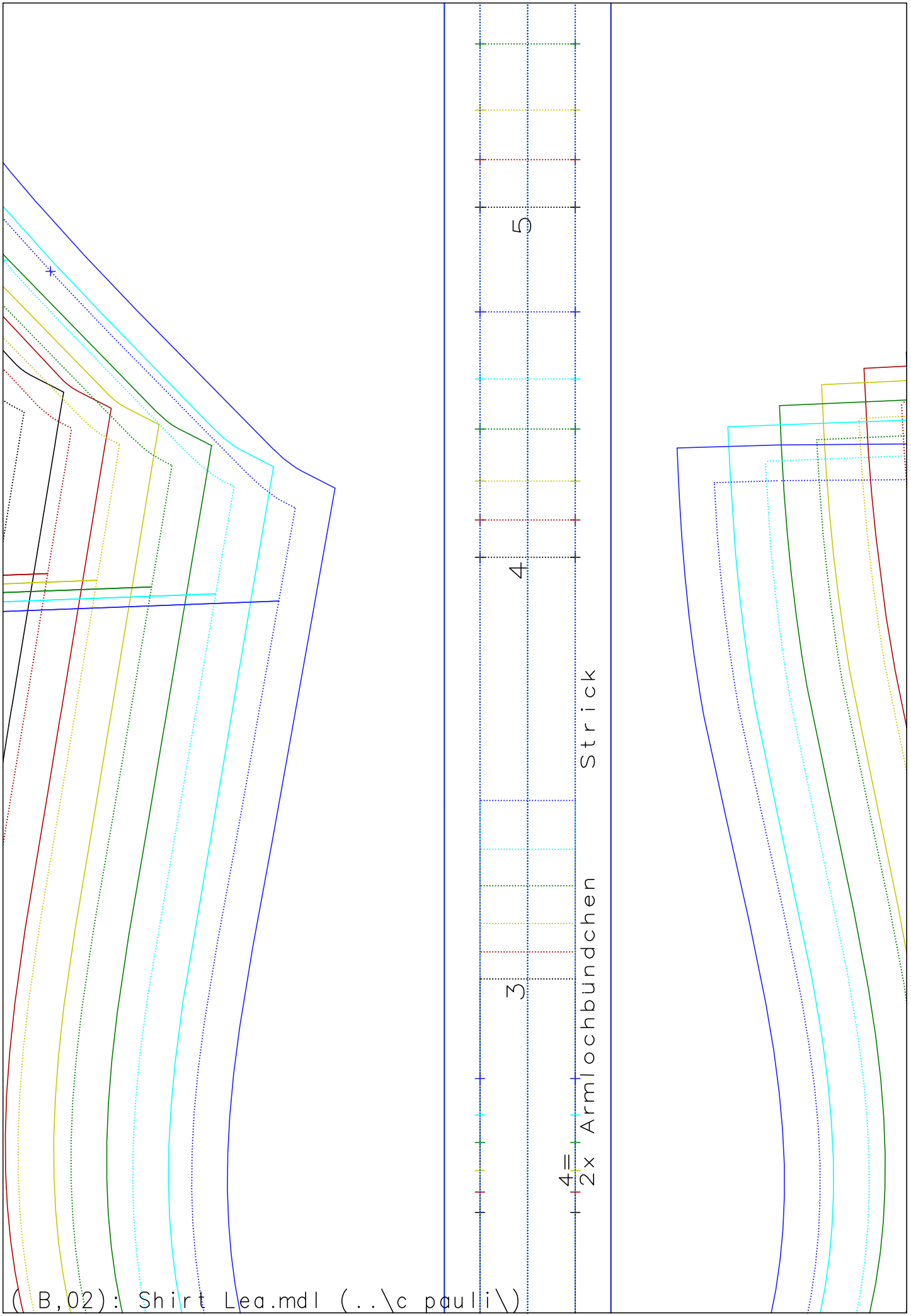
(C,01): Shirt Lea.mdl (..\c pauli\)

2+



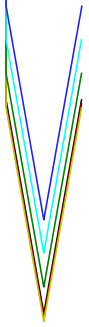
hintere Mitte Stoffbruch

2=
1x Rückenteil



(B, 02): Shirt Lea.mdl (..\c pauli\)

vordere Mitte Stoffbruch



Zur eigenen Sicherheit:
Kontrollfenster nachmessen!

Seitenlänge 10 cm
4 inches

___N34_0

___N36_0

___N38_0

___N40_0

___N42_0

___N44_0

1

1 =

1x Vorderteil

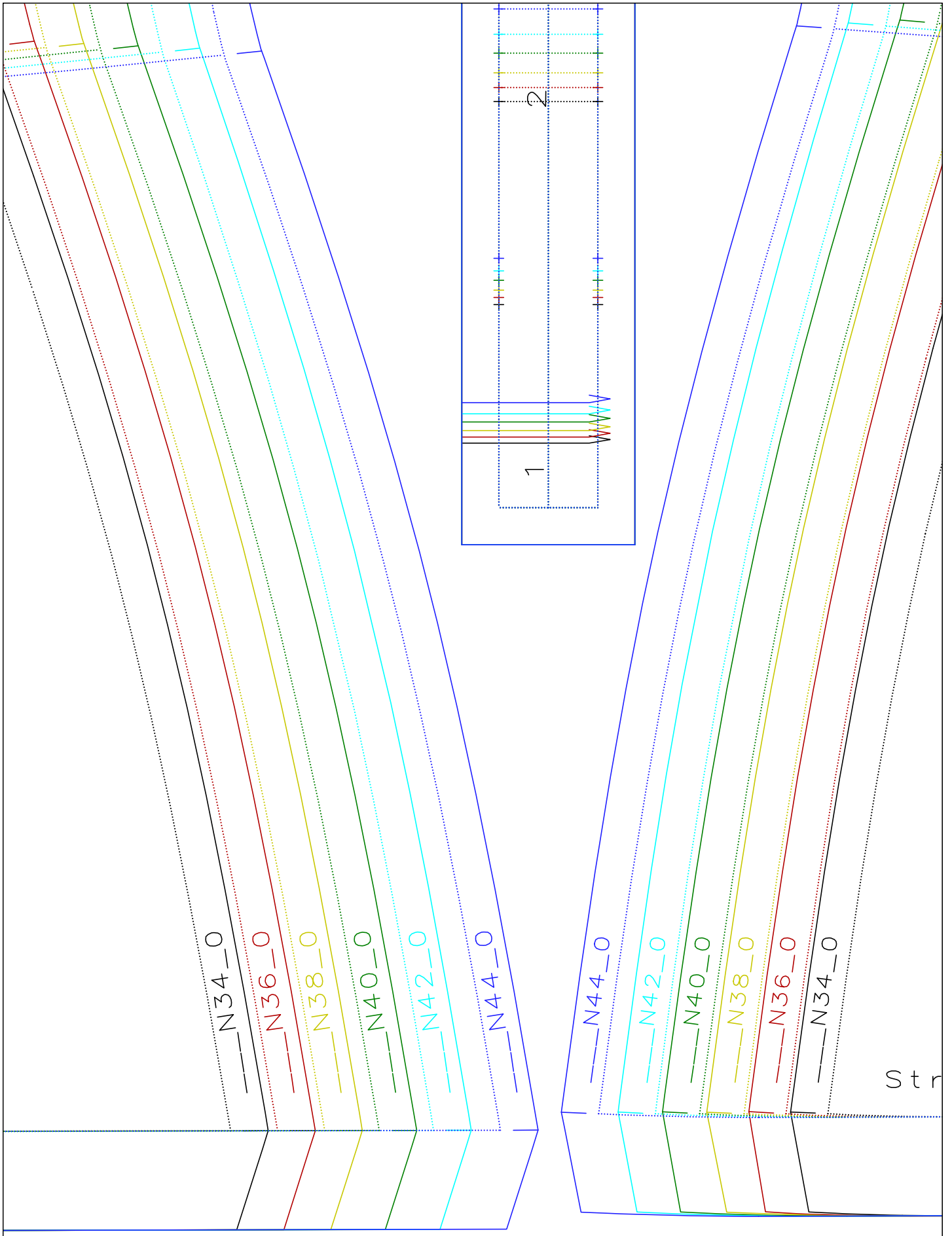
(B,01): Shirt Lea.mdl (..\c_pauli\)



Taille

2=
1x Rückenteil

eifen an Vorderteil Seitennaht anpassen



T a i l l e

1 =
1 x V o r d e r t e i l