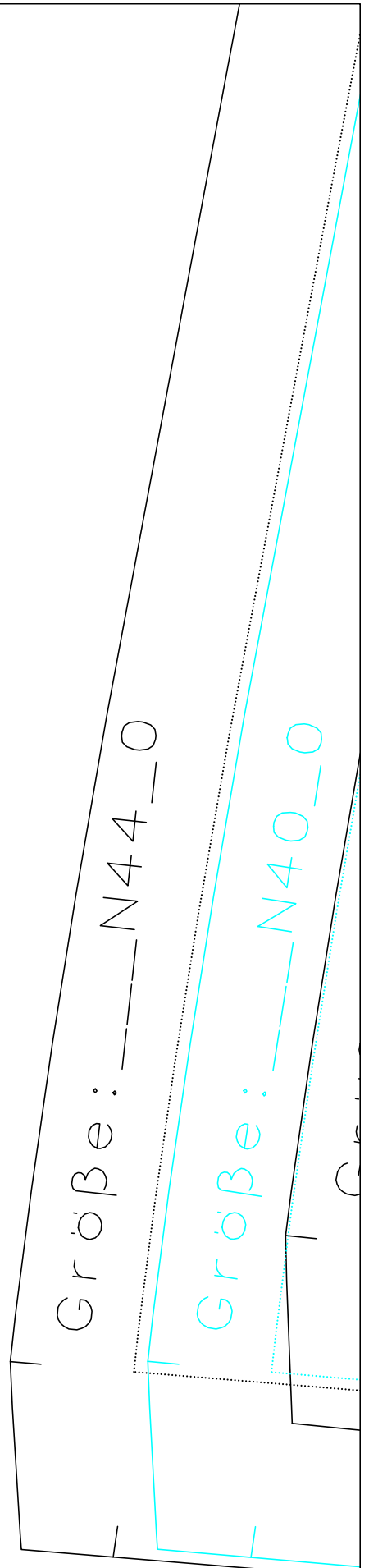
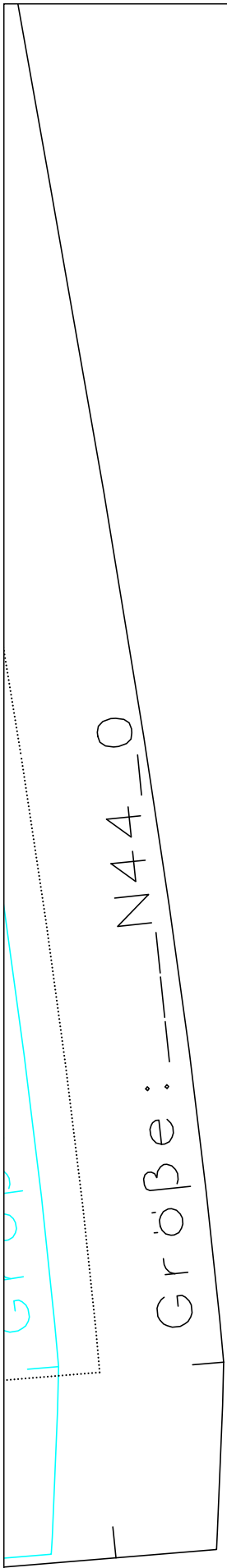


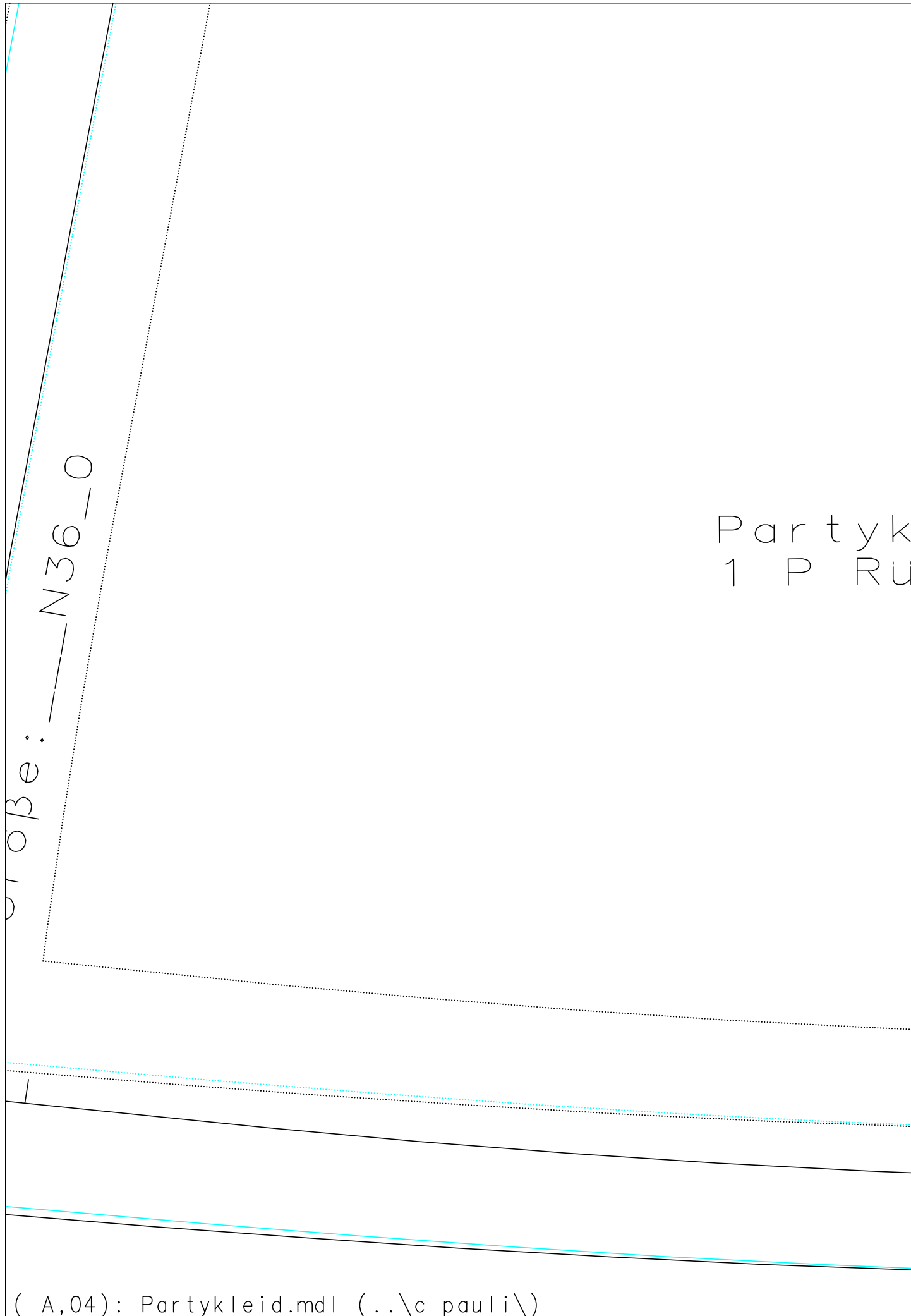
Partyk
1x Vor

leid
der teil

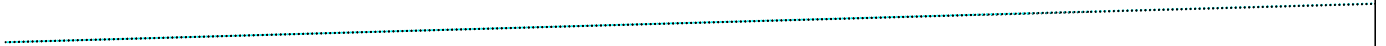
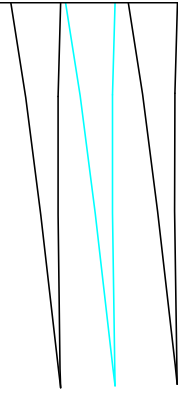
Größe: --- N36_0

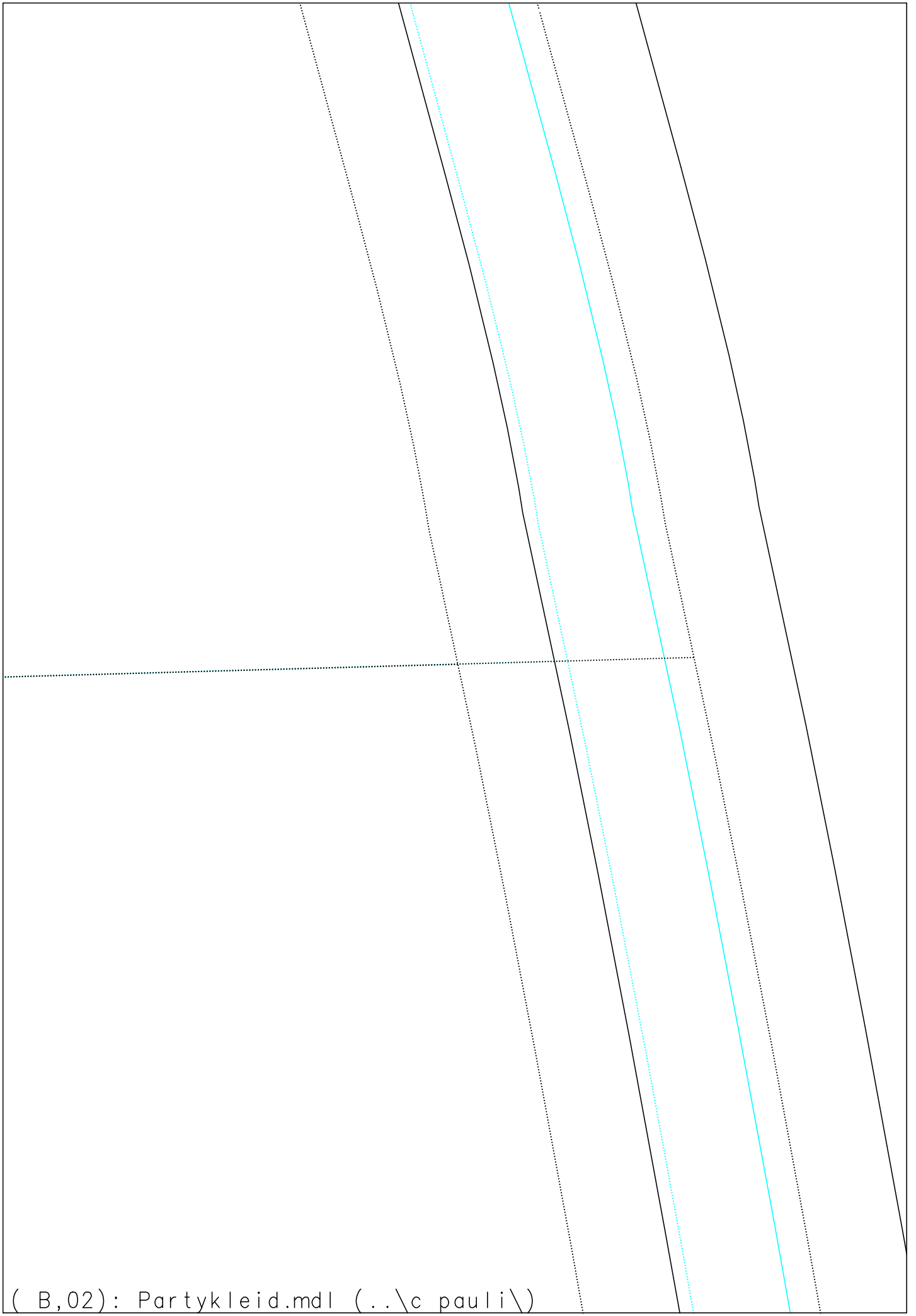
Größe: --- N40_0

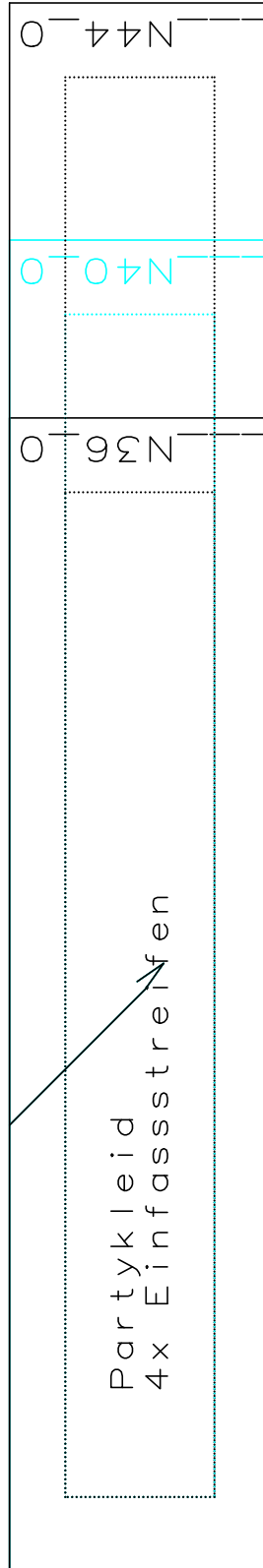
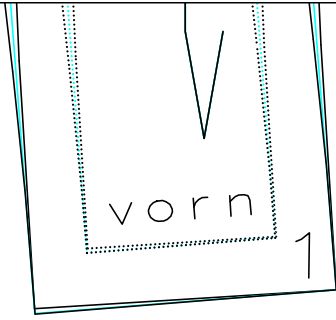


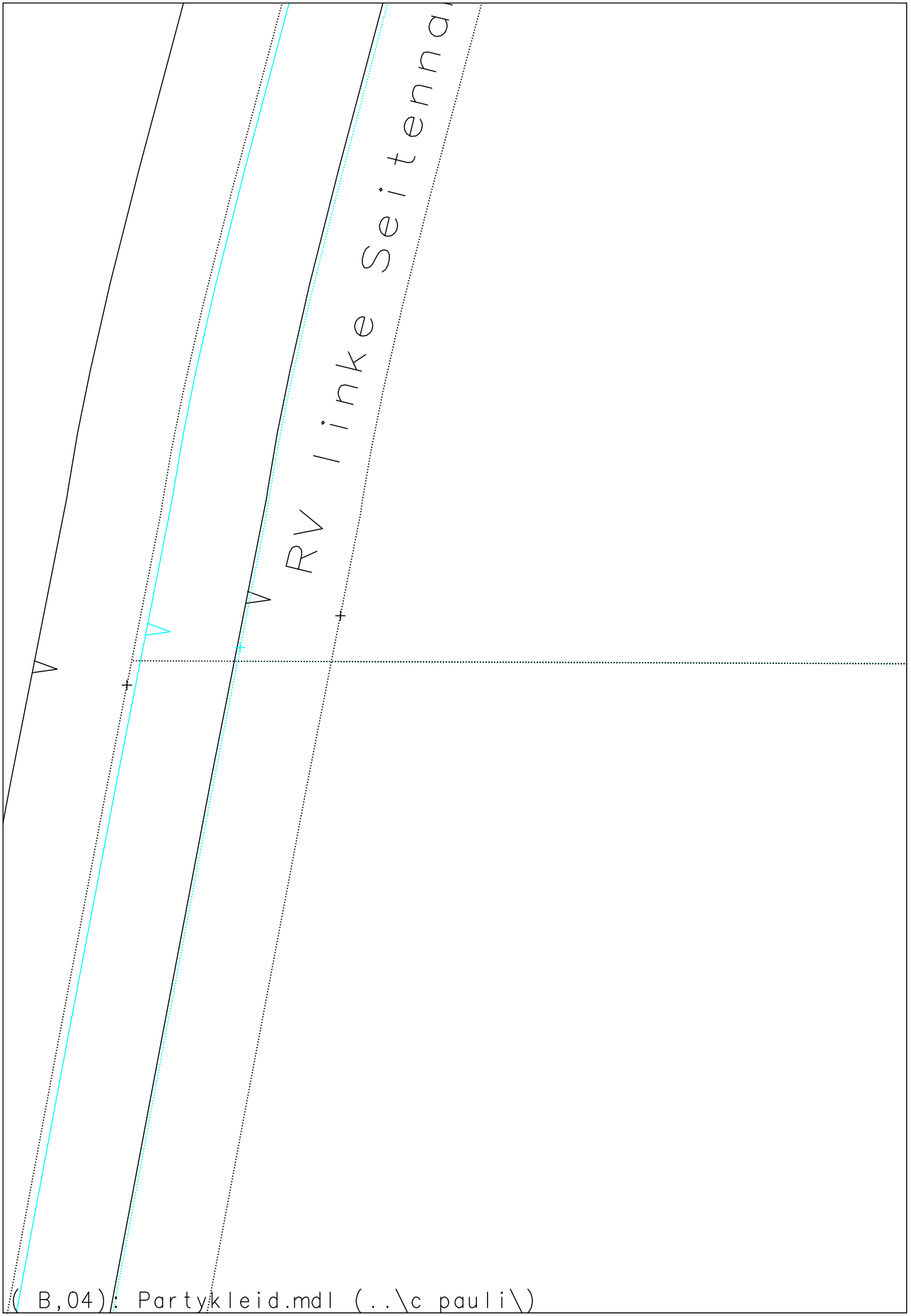


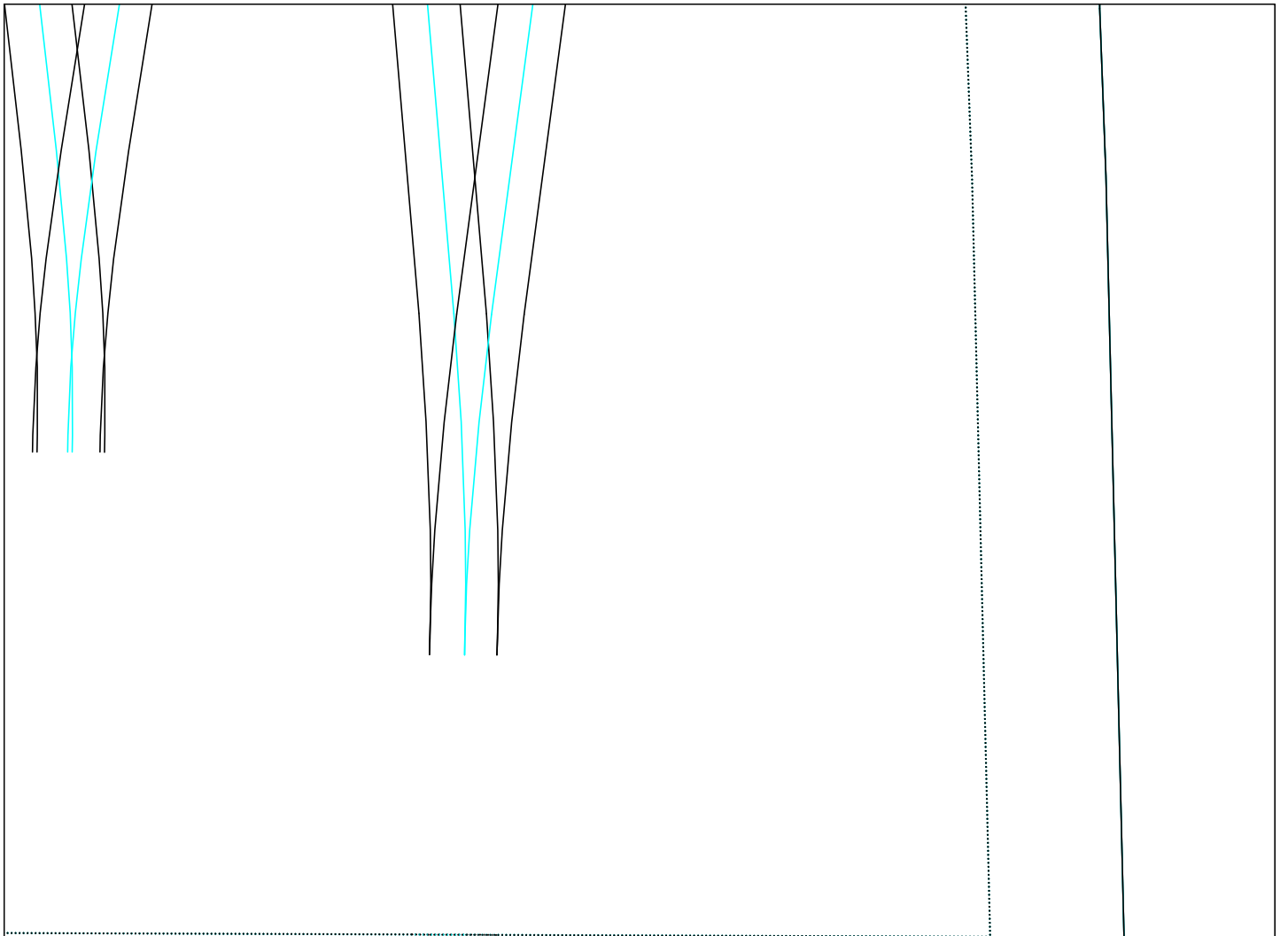
leid
ckenteil





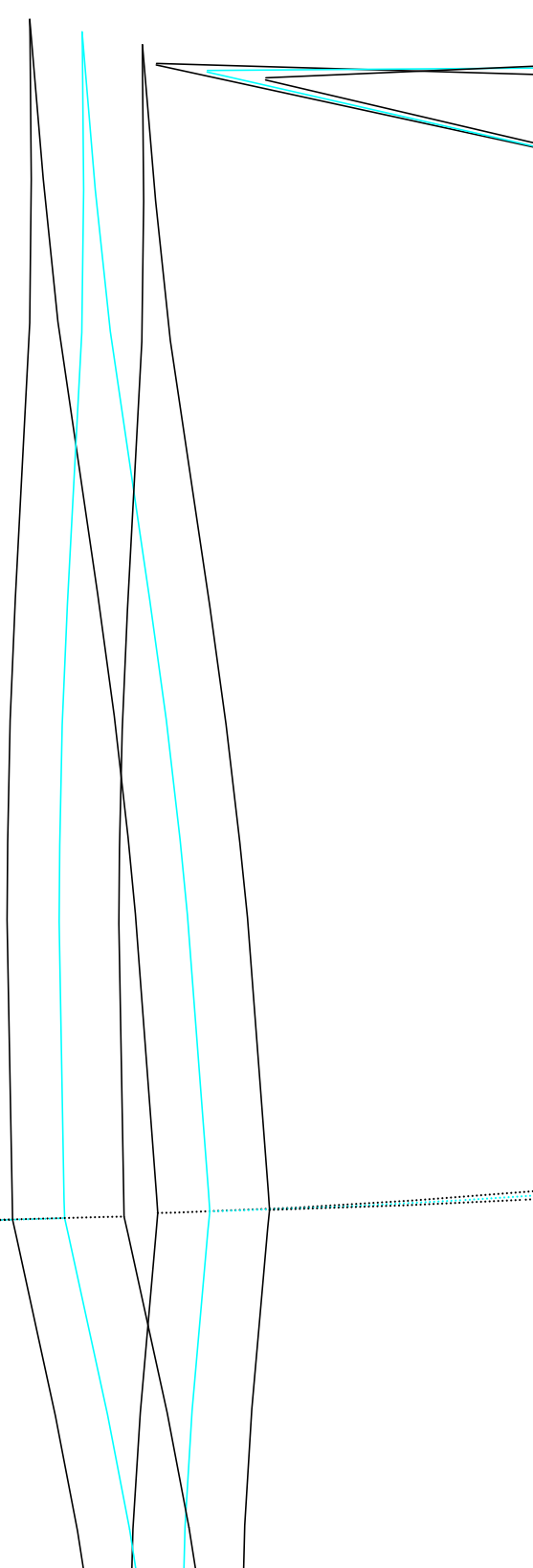


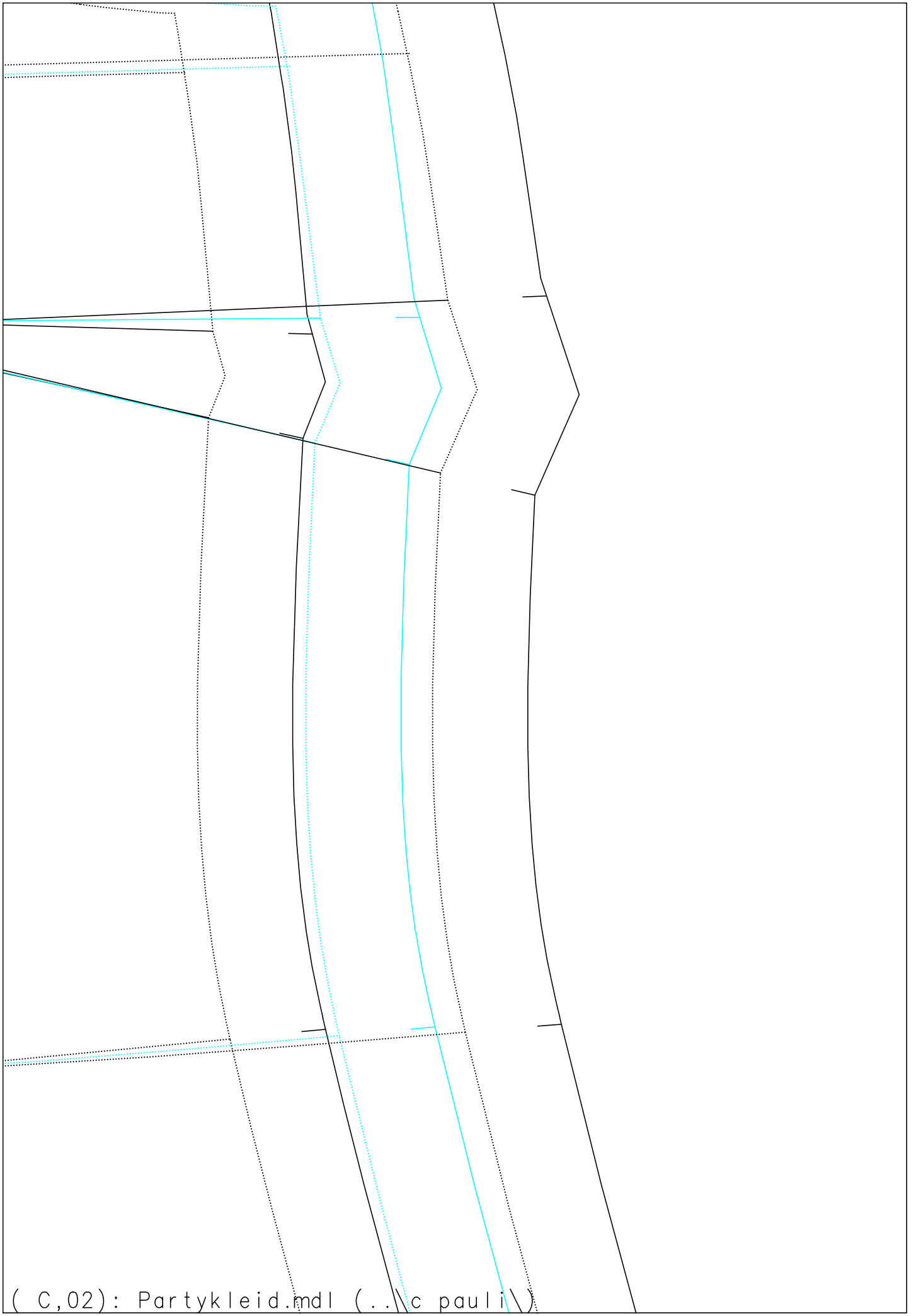




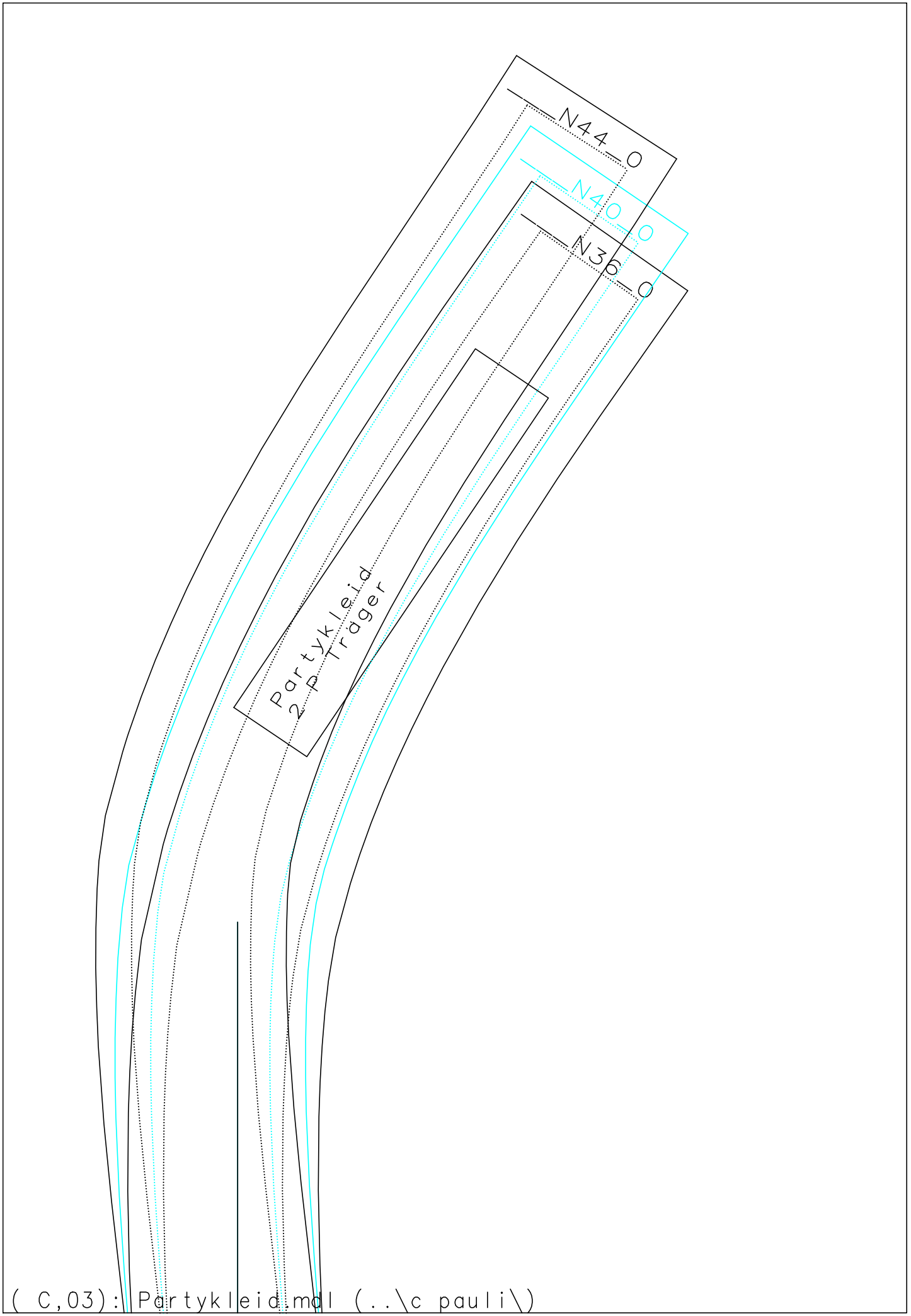
(B,05): Partykleid.mdl (..\c pauli\)

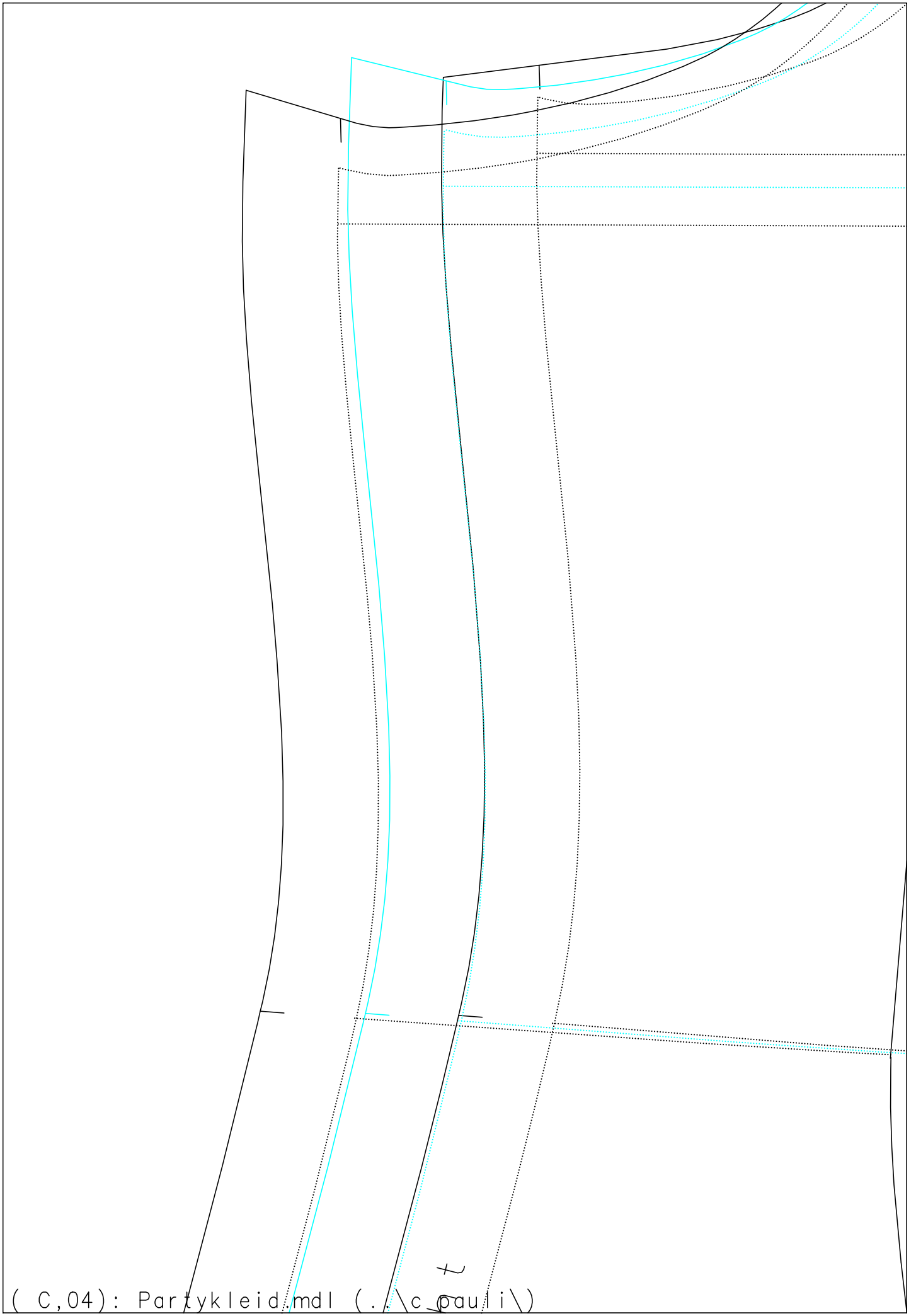
vordere Mitte Bruch



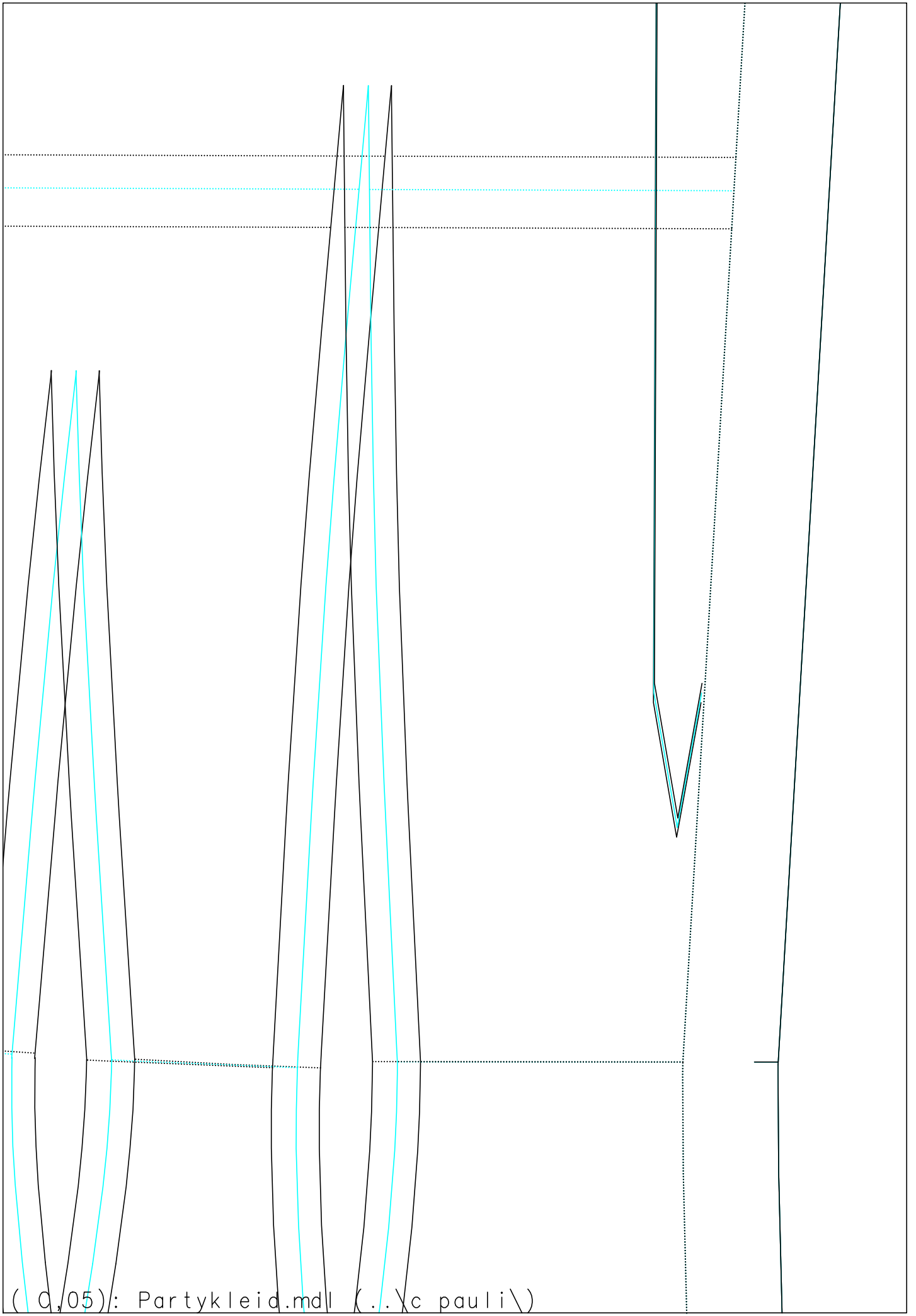


(C,02): Partykleid.mdl (...c pauli\)

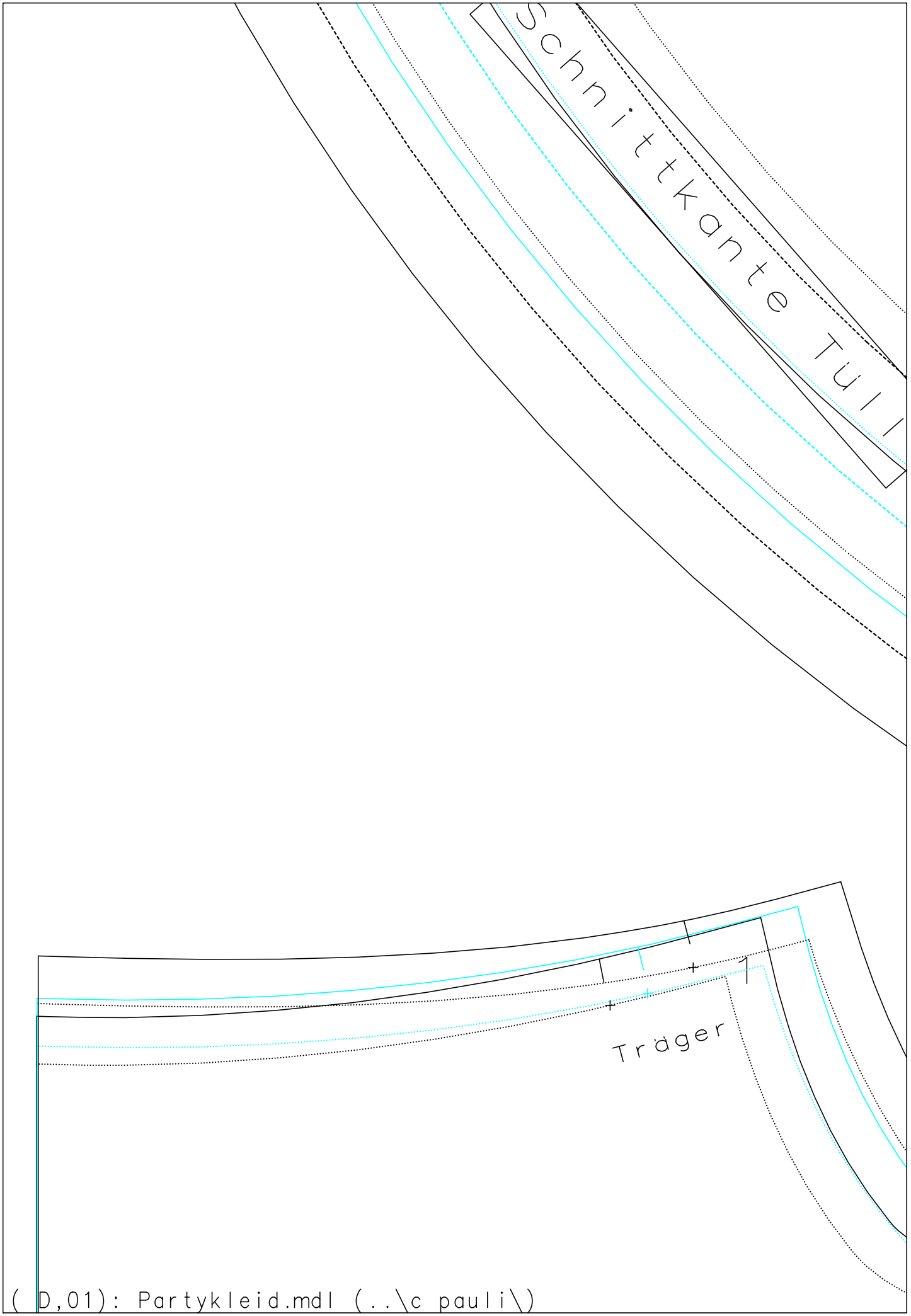


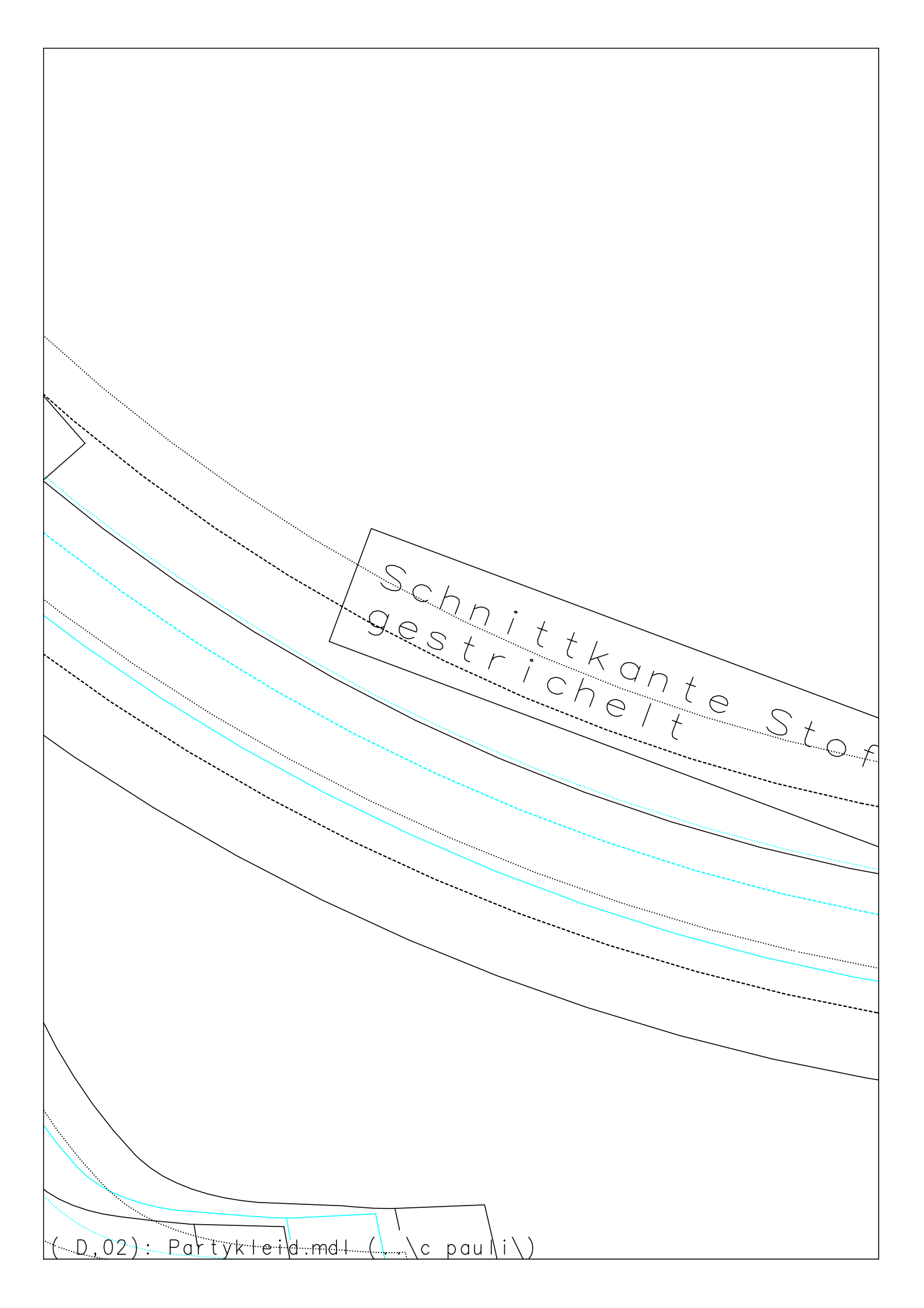


(C,04): Partykleid.mdl (.\c_pauli\)



(C,05): Partykleid.mdl (..\c pauli\)

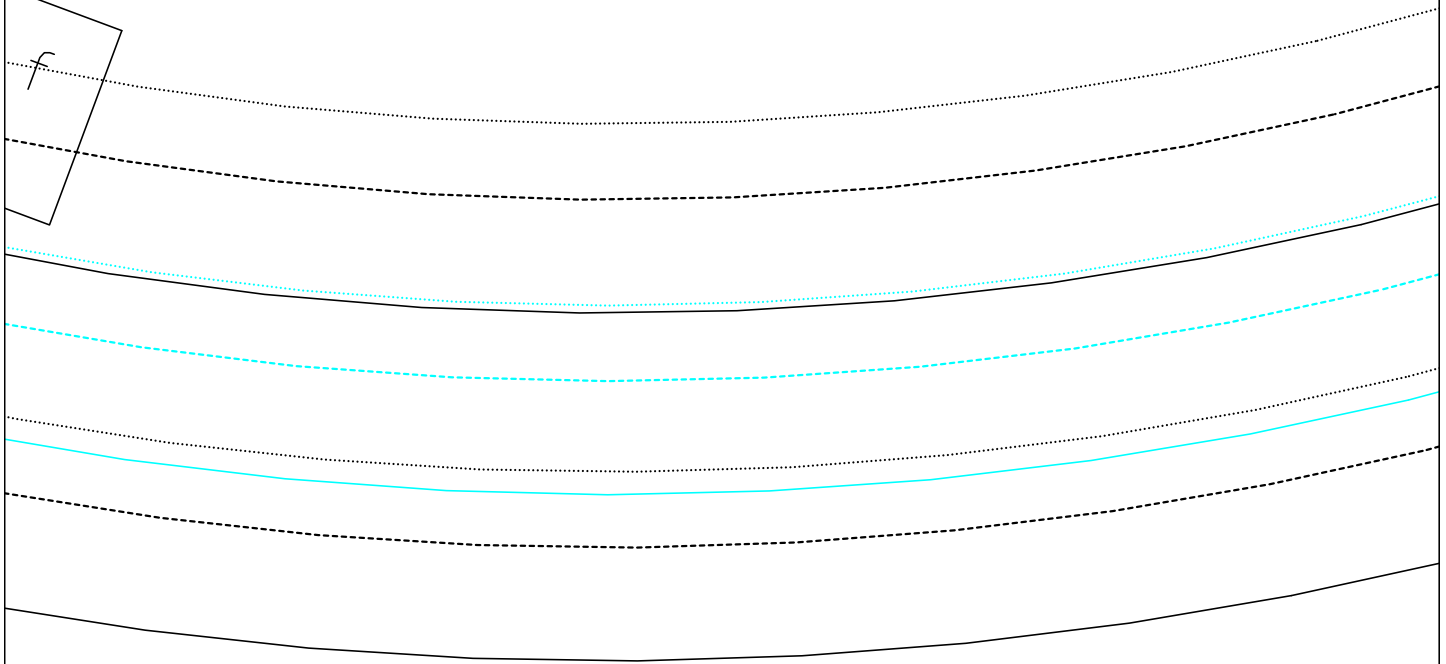


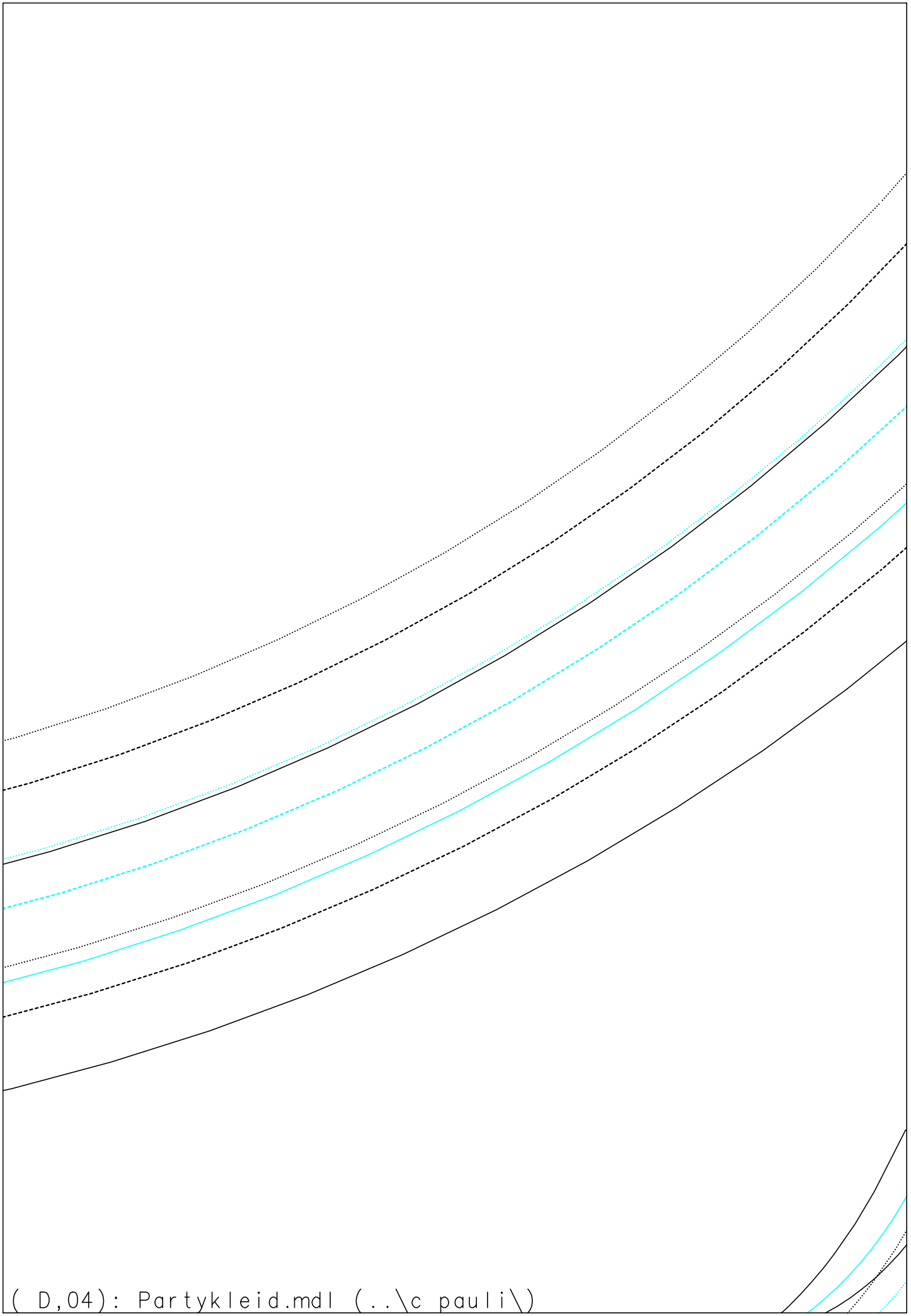


Schnittkante Stoff
gestrichelt

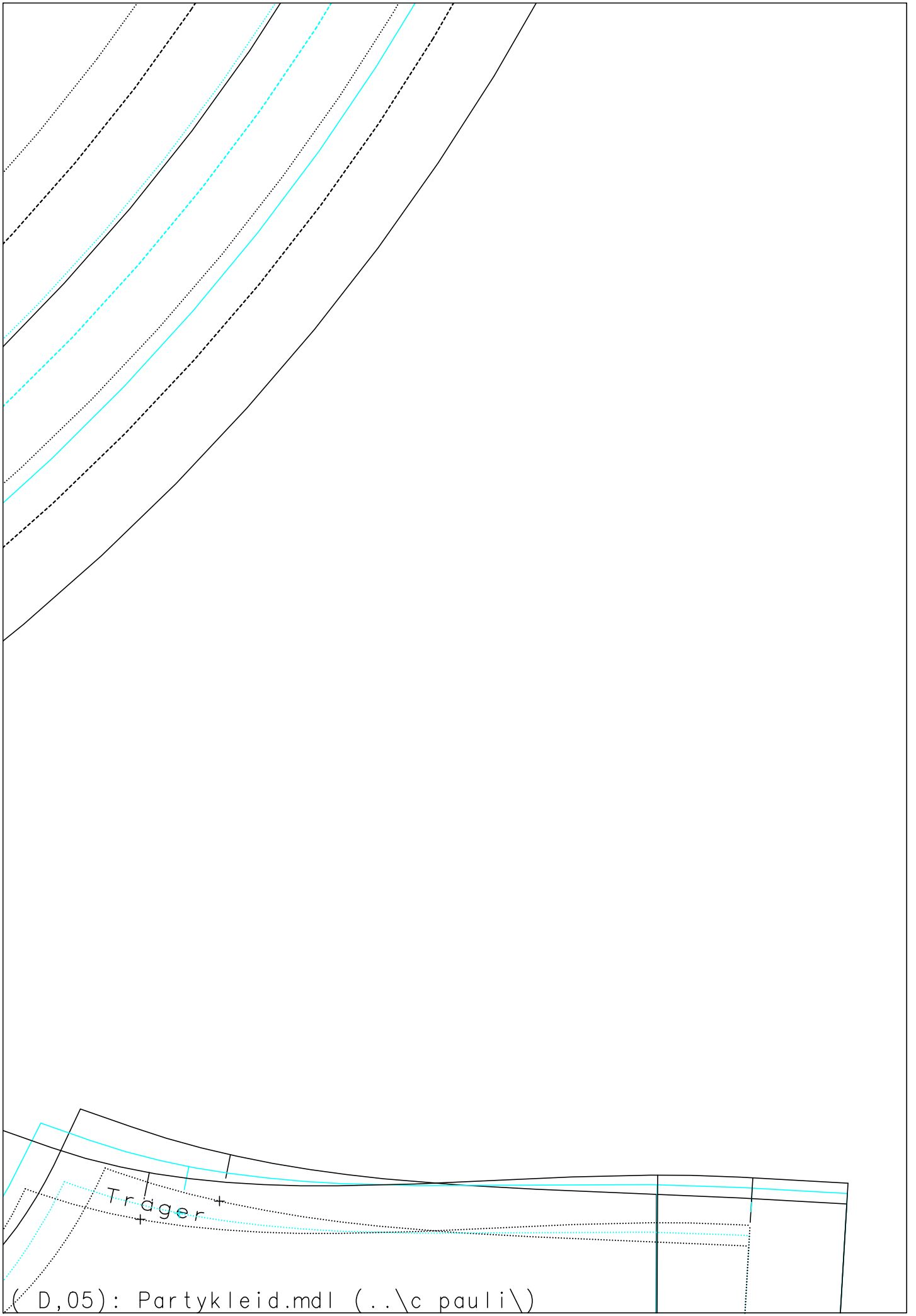
The image shows a technical drawing of a garment pattern, likely a skirt or dress, with multiple curved lines representing different layers or pieces. A label is placed over the pattern, indicating that the cut edges of the fabric should be finished with a decorative or functional edge treatment. The label is written in a handwritten style and is enclosed in a rectangular box.

länge: 228 .mm
Gummi länge: 247 .mm
Gummi länge: 261 .mm





(D,04): Partykleid.mdl (..\c pauli\)



(D,05): Partykleid.mdl (..\c pauli\)

hintere Mitt

Größe: _____

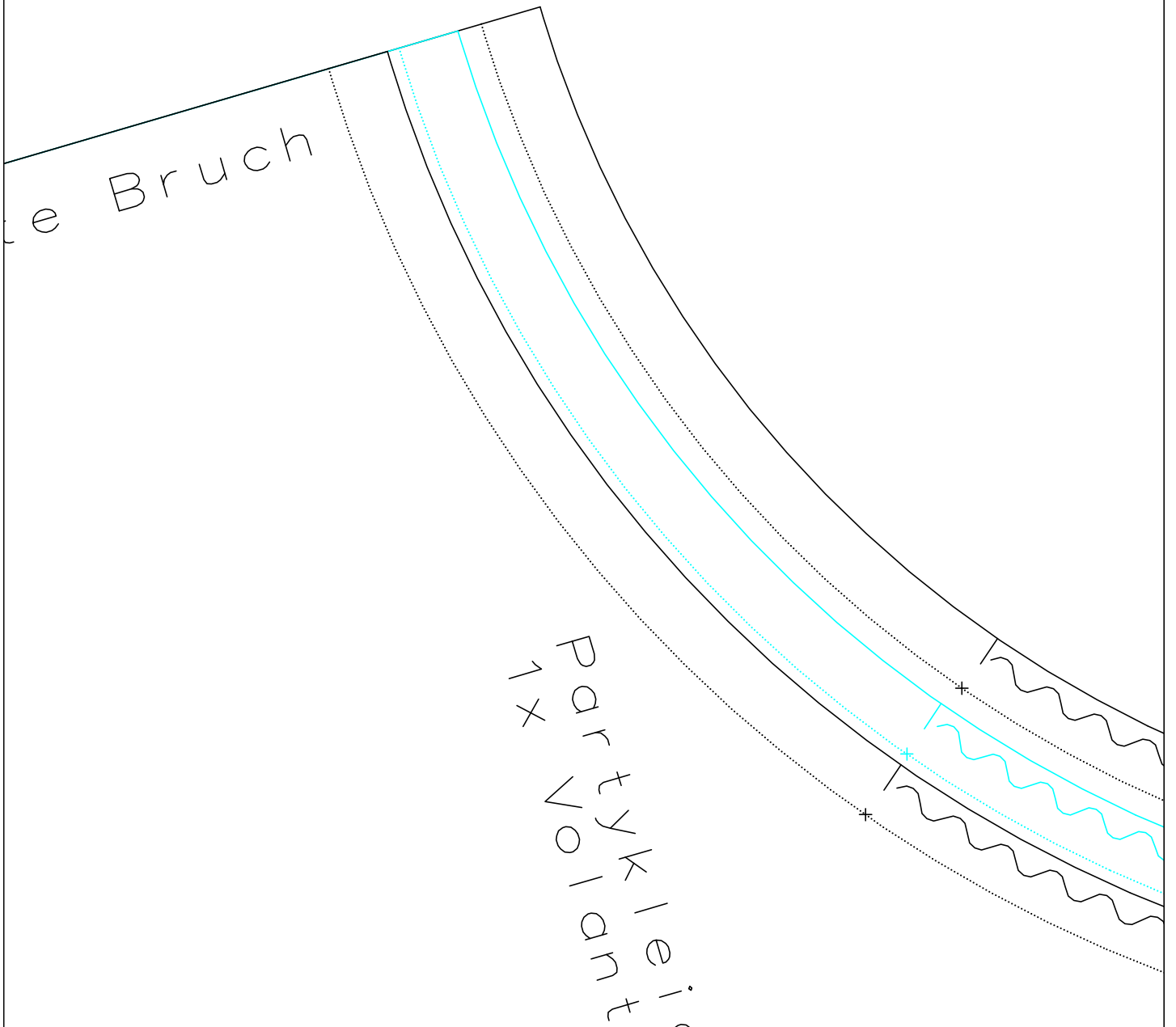
Größe: _____

Größe: _____

N36-0

N40-0

N44-0



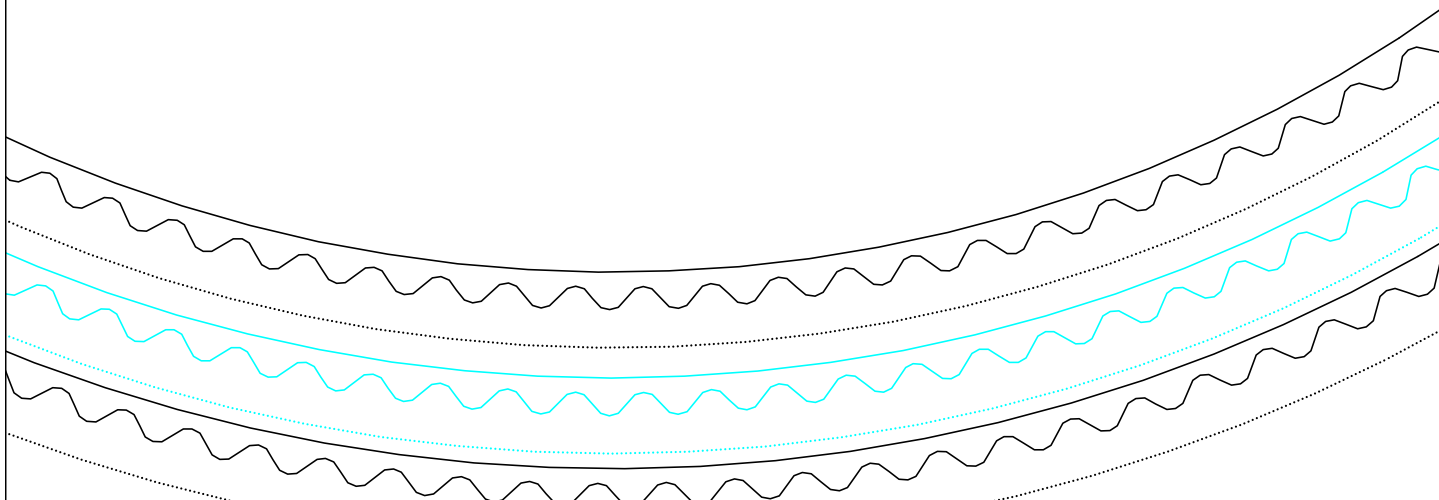
Zur eigenen Sicherheit:
Kontrollfenster nachmessen!

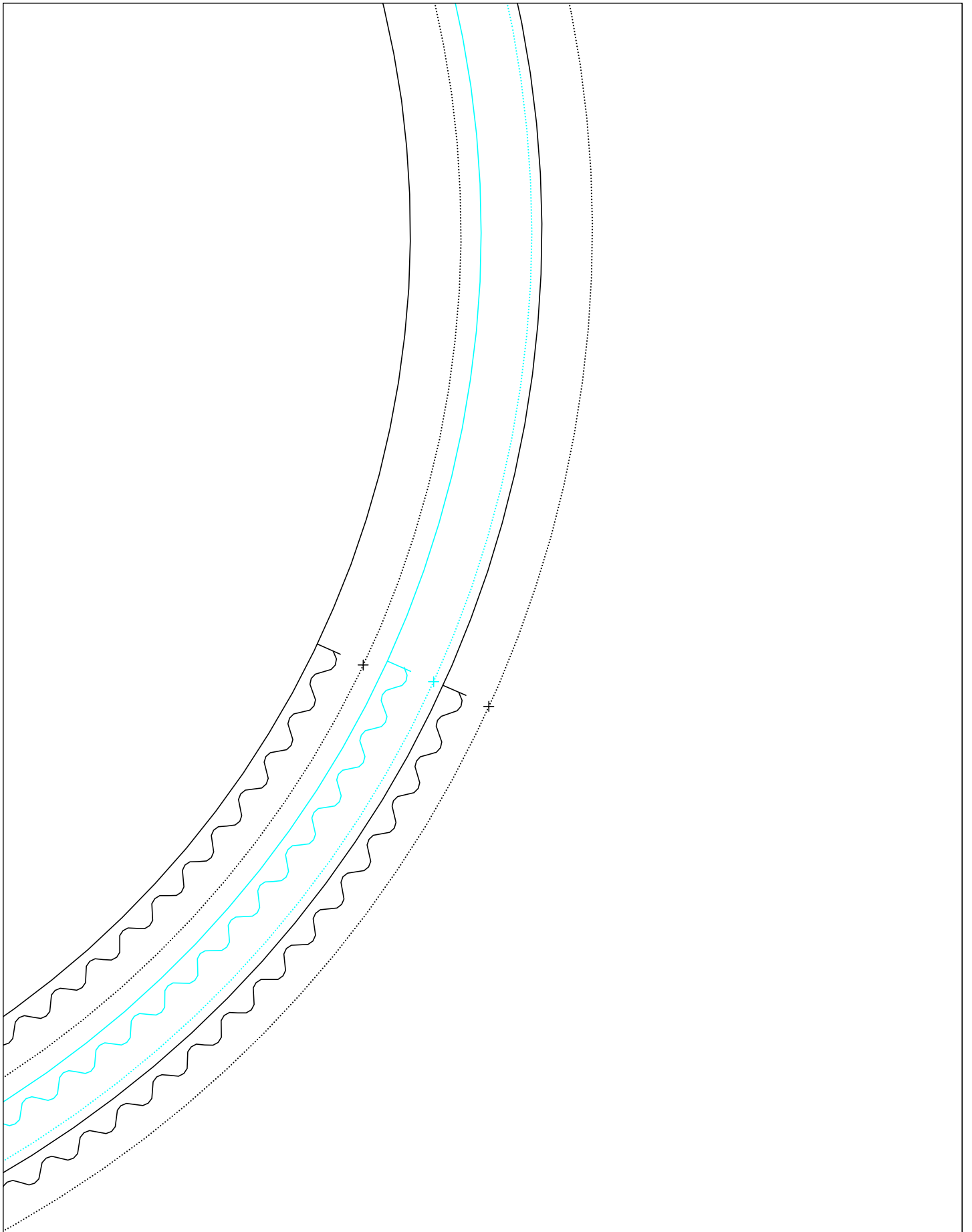
Seitenlänge 10 cm
4 inches

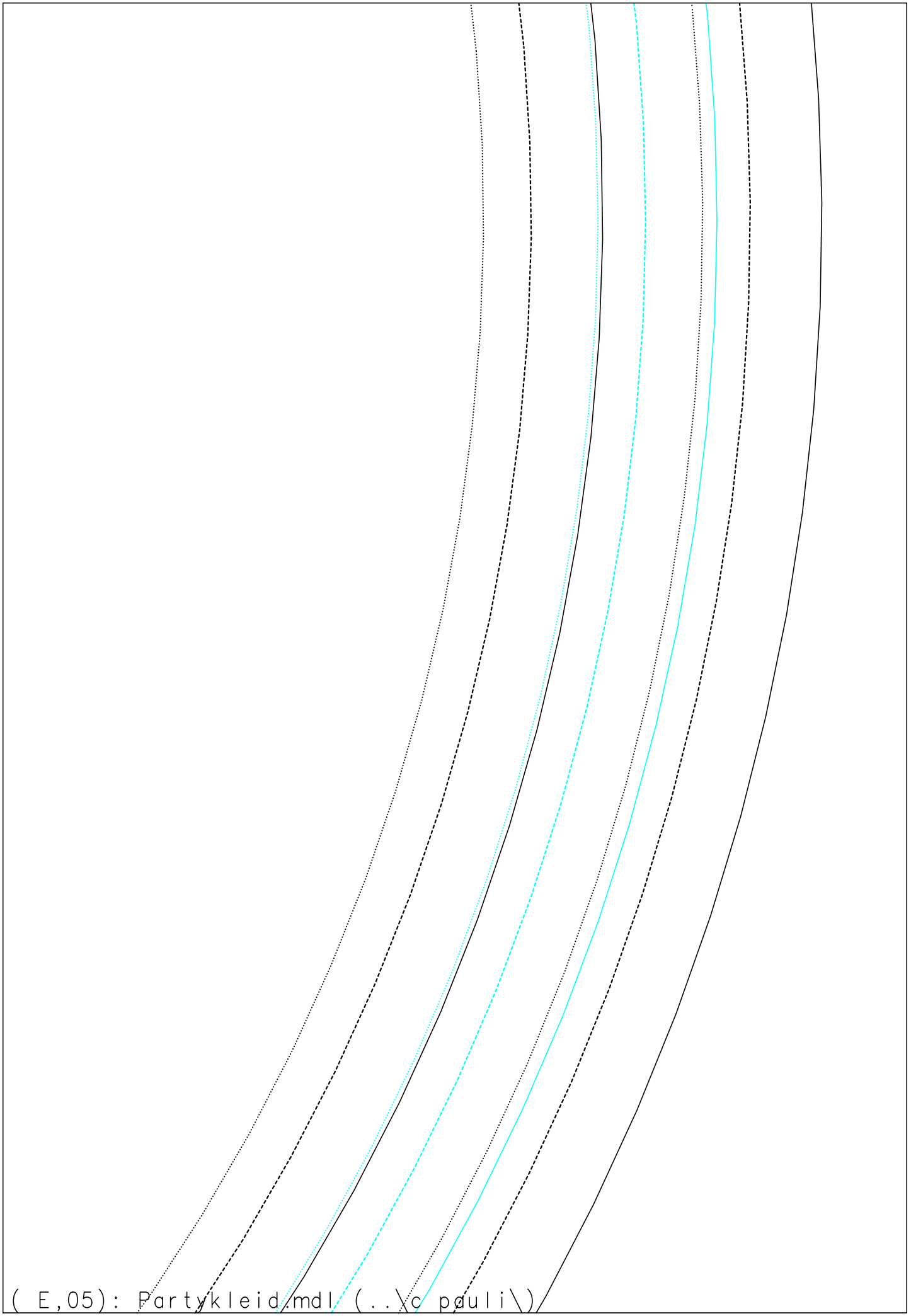
Größe: ___N36_0

Größe: ___N40_0

Größe: ___N44_0







(E,05): Partykleid.mdl (..\c pauli\)

vordere M

itte Bruch