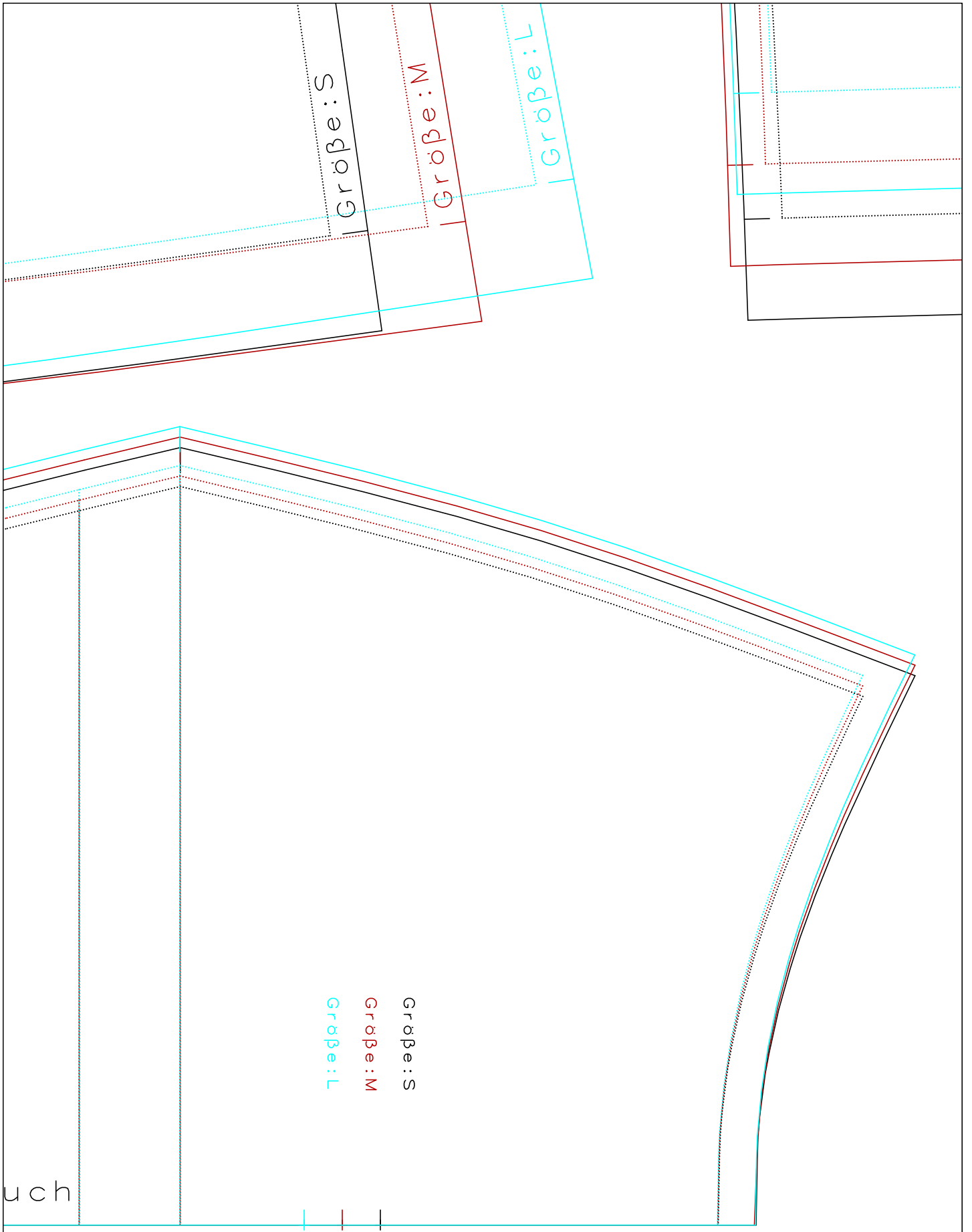
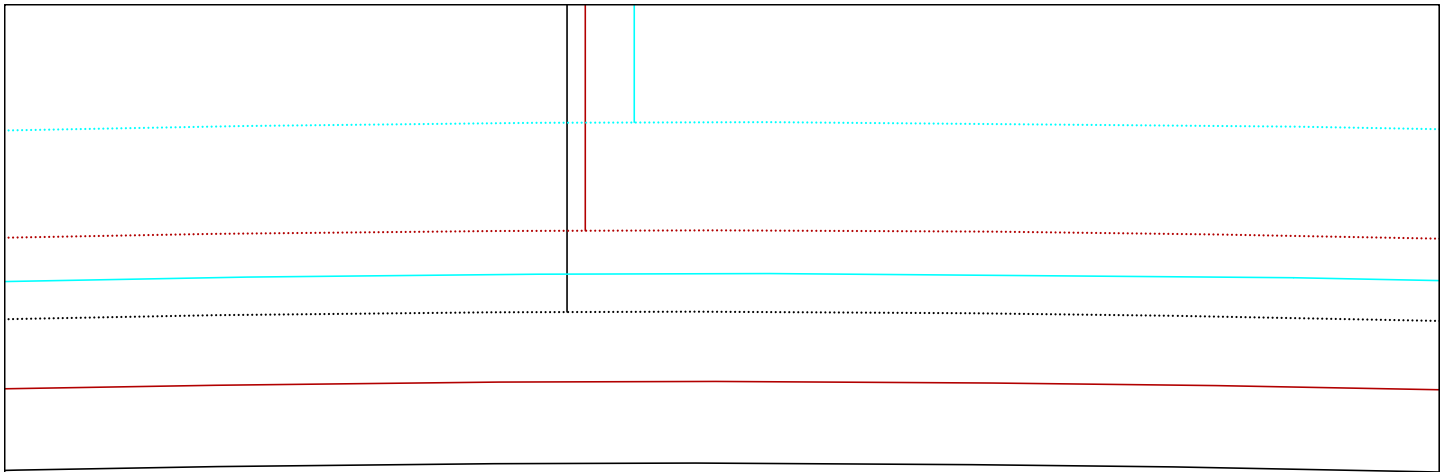


Pluschshirt
1x Krögen hinten
06.09.17

Hinterere Mitte Br

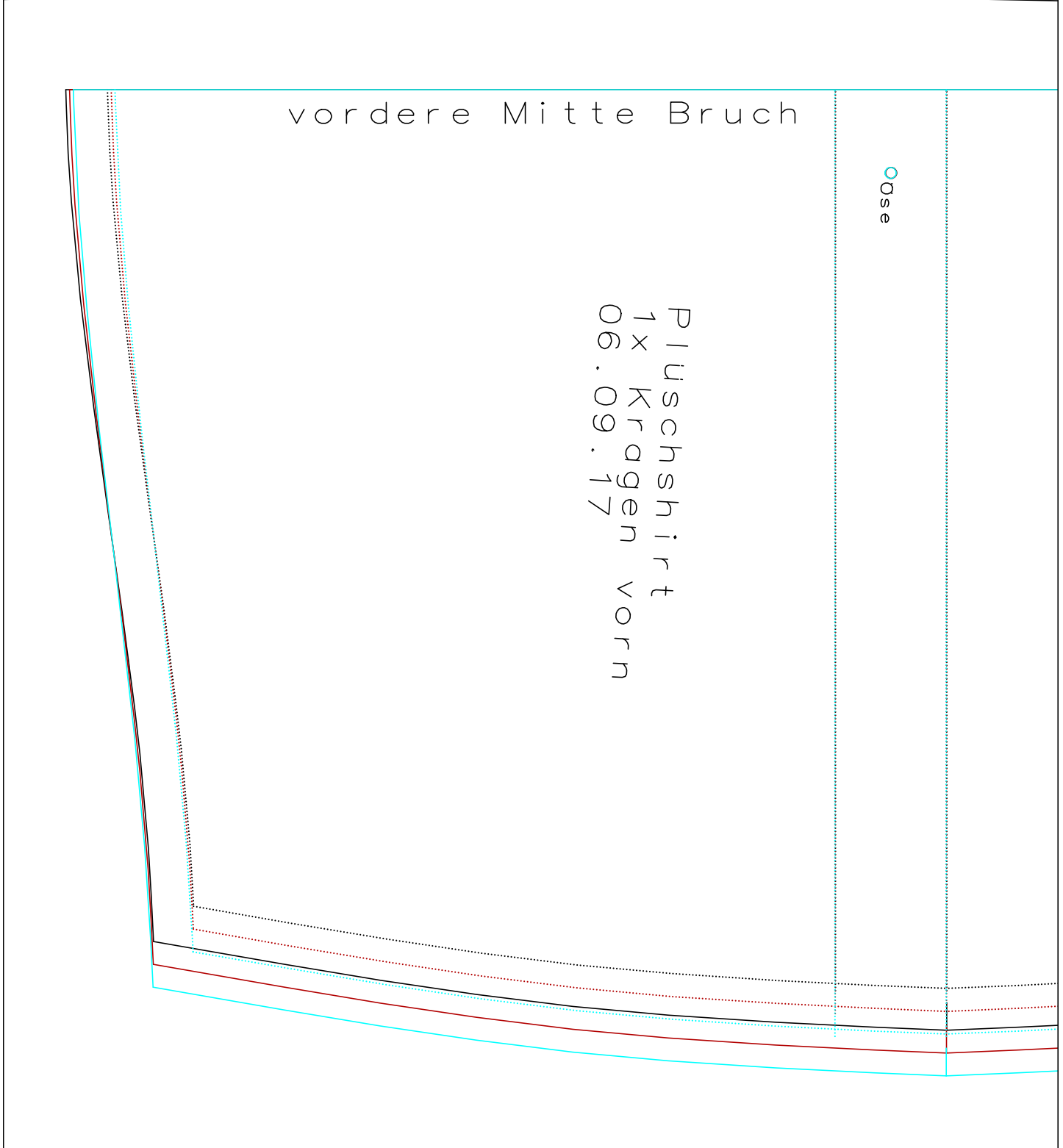


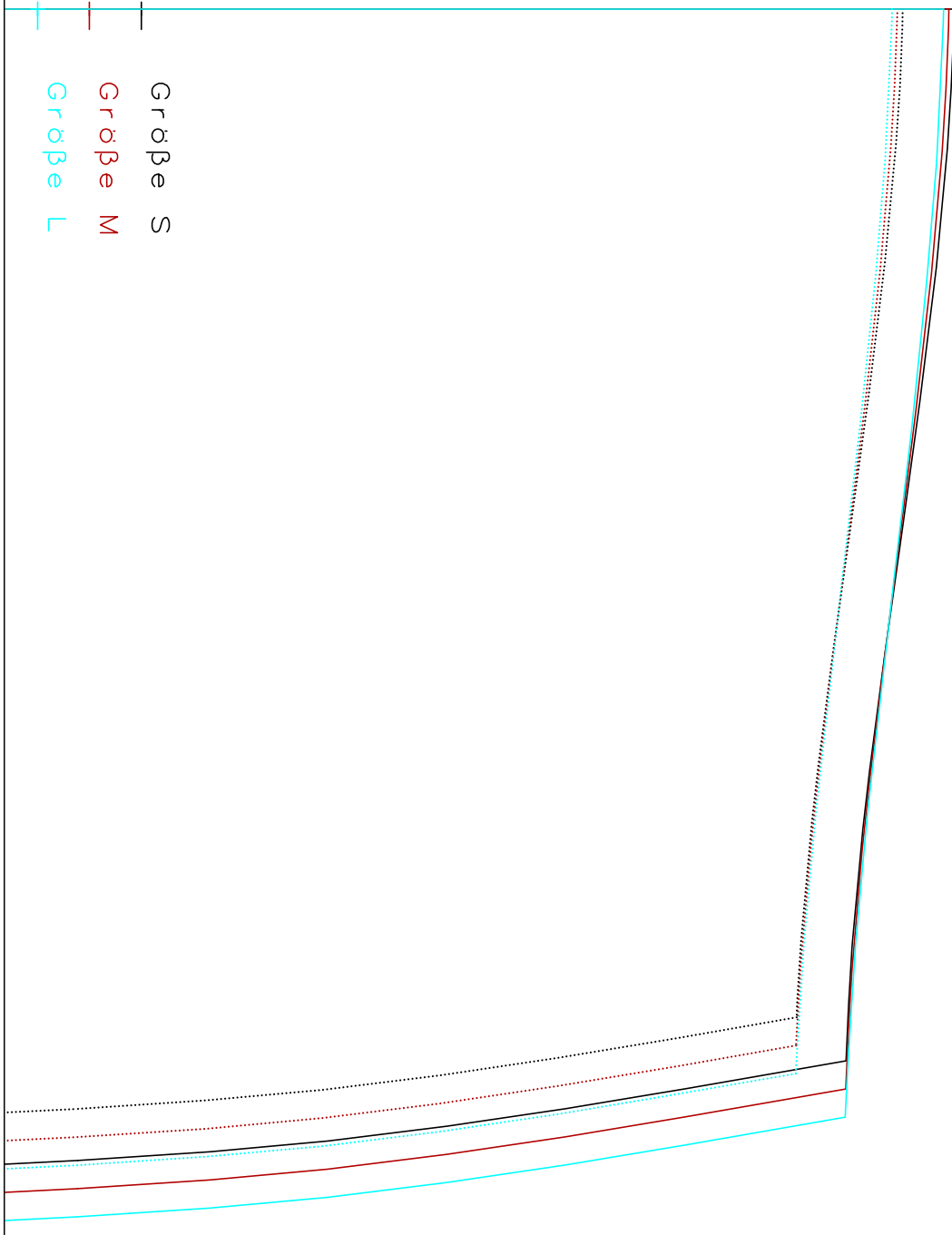
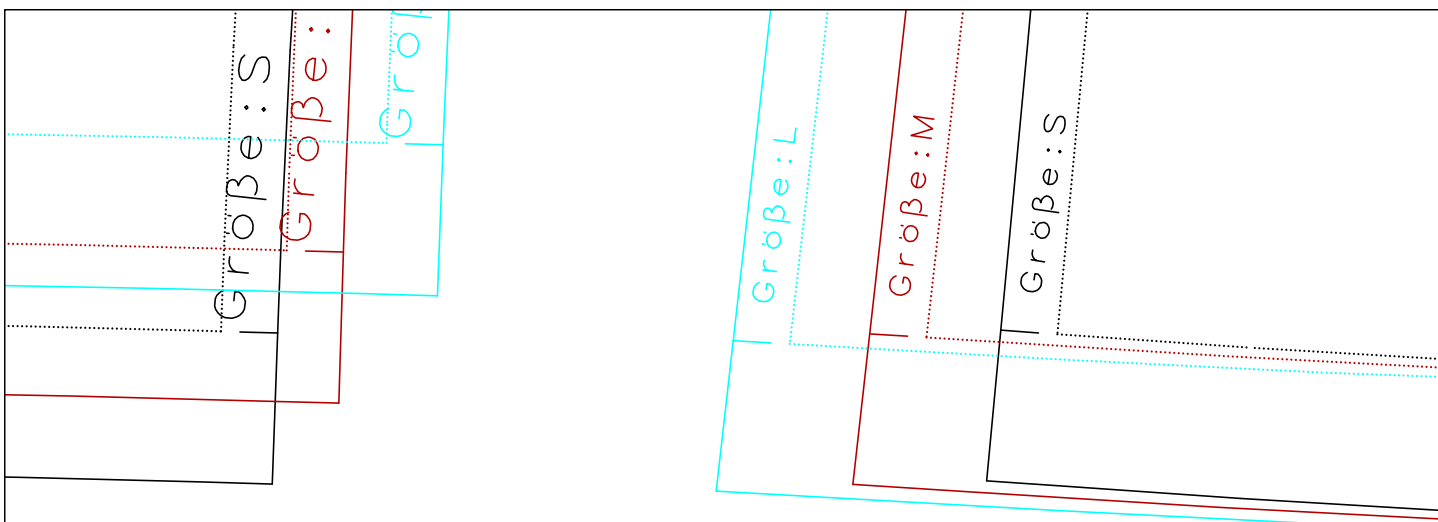


vordere Mitte Bruch

Osse

Pluschshirt
1x Kraegen vorn
06.09.17





Zur eigenen Sicherheit:
Kontrollfenster nachmessen!

Seitenlänge 10 cm
4 inches

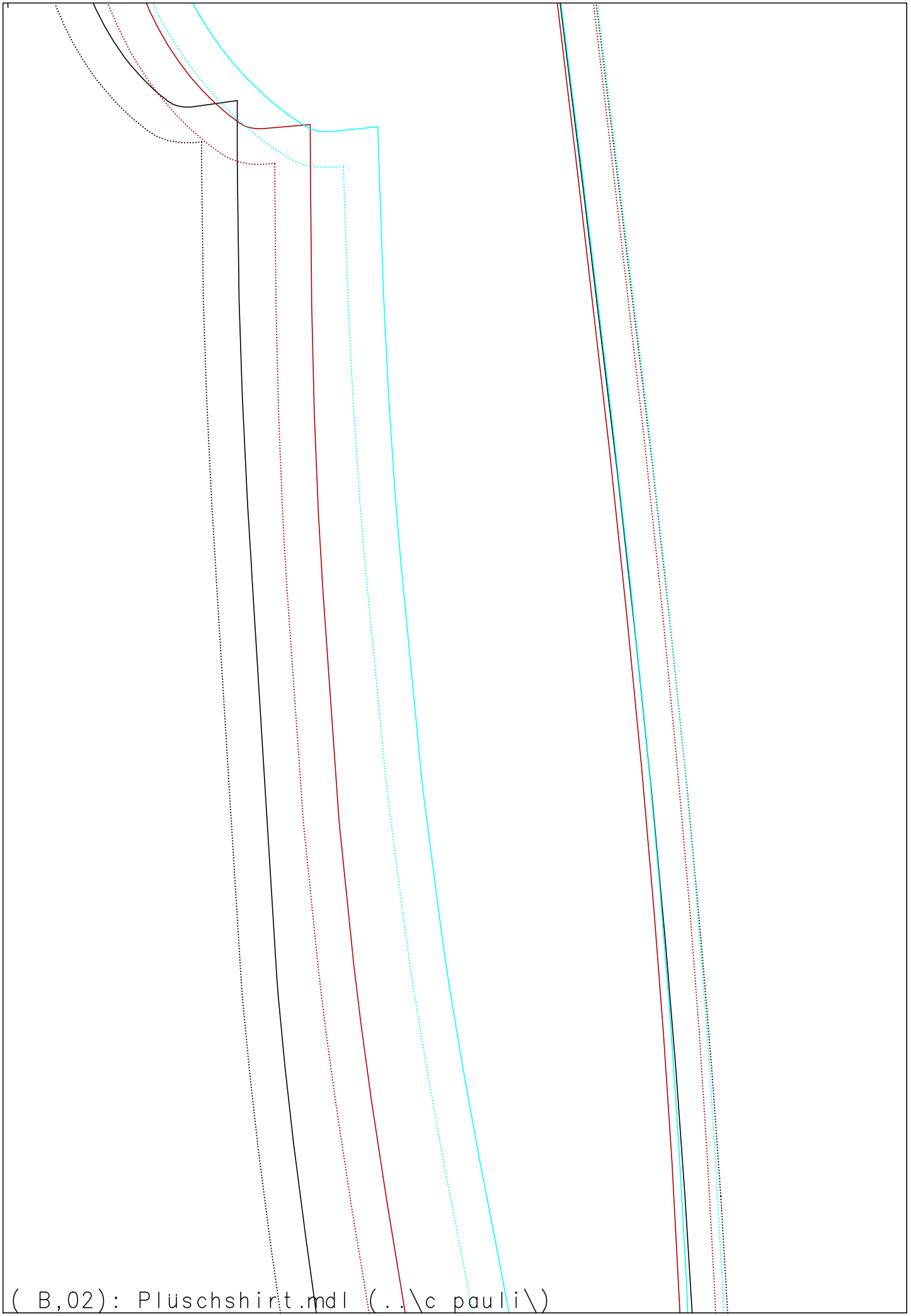
Größe: S

Größe: M

Größe: L

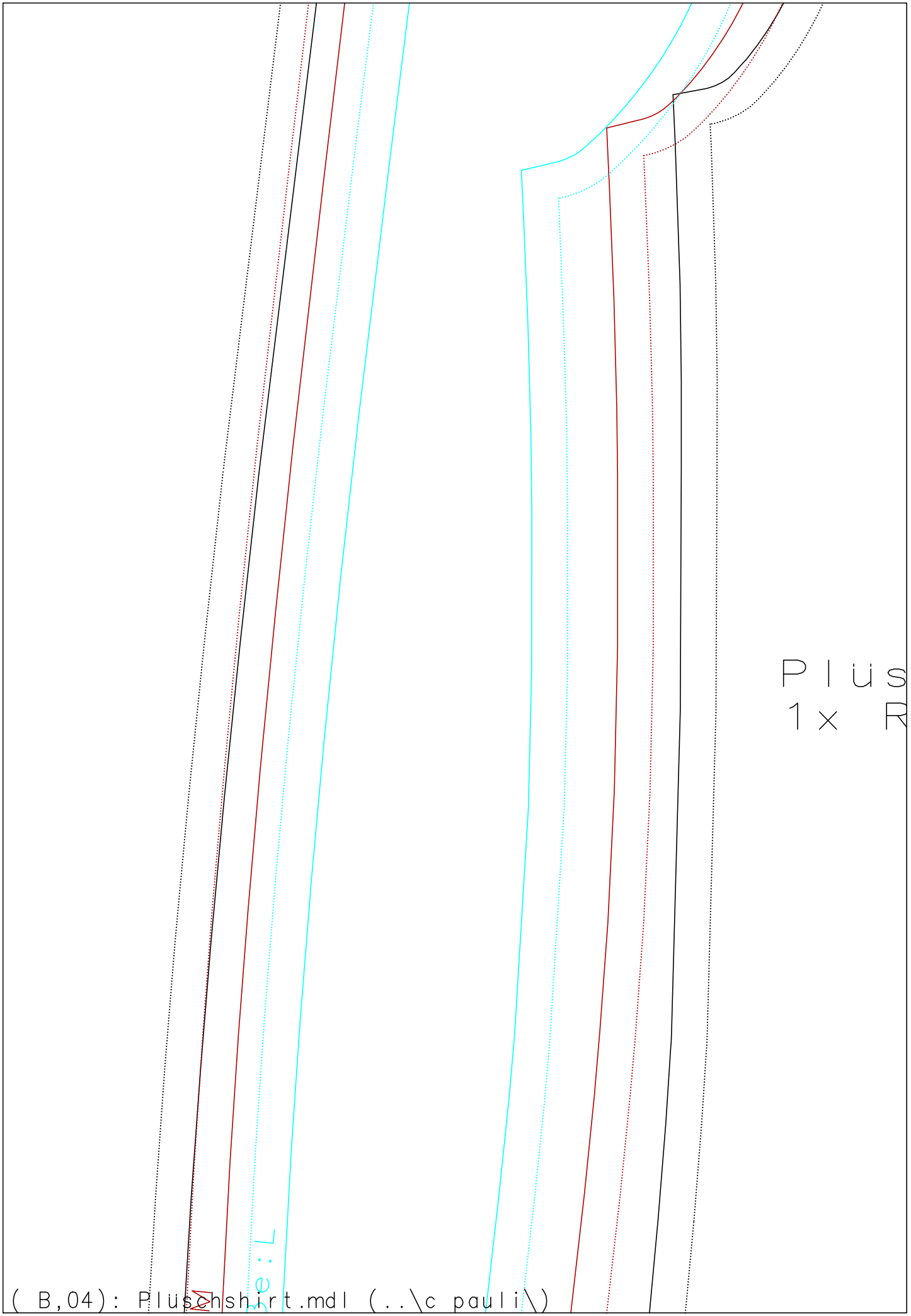
vordere Mitte Bruch

Pluschshirt
1x Vorderenteil



(B,02): Pluschshirt.mdl (..\c pauli\)

Pluschshirt
1 P Ärmel

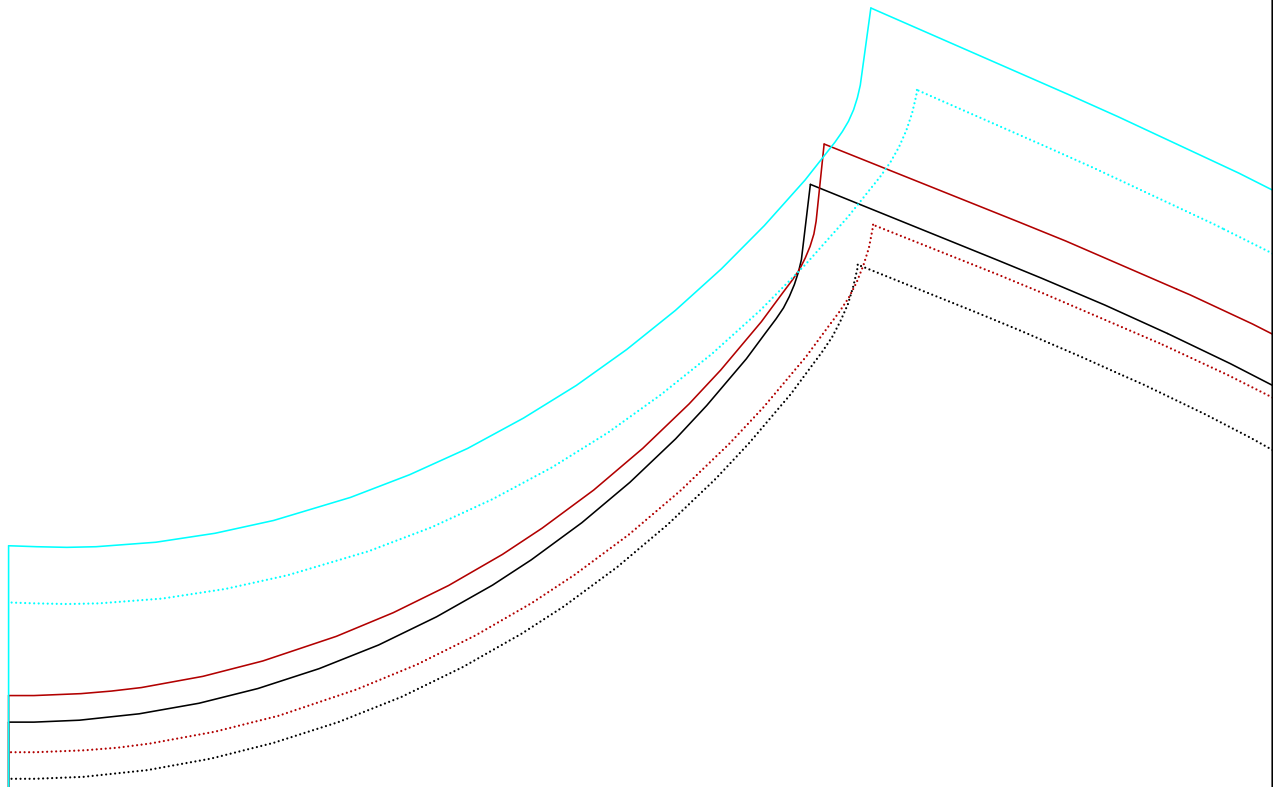


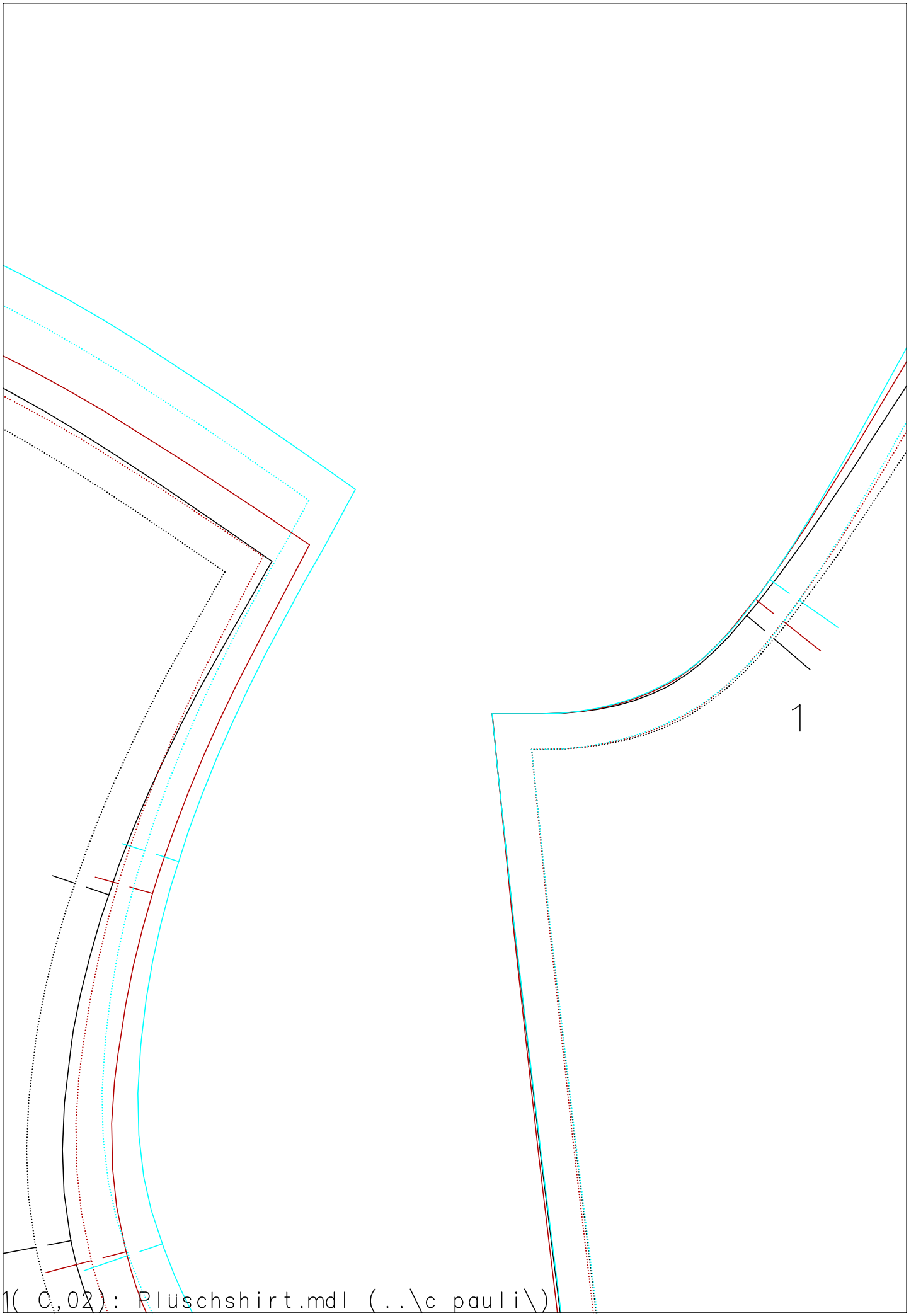
P I Ü S
1 x RUS

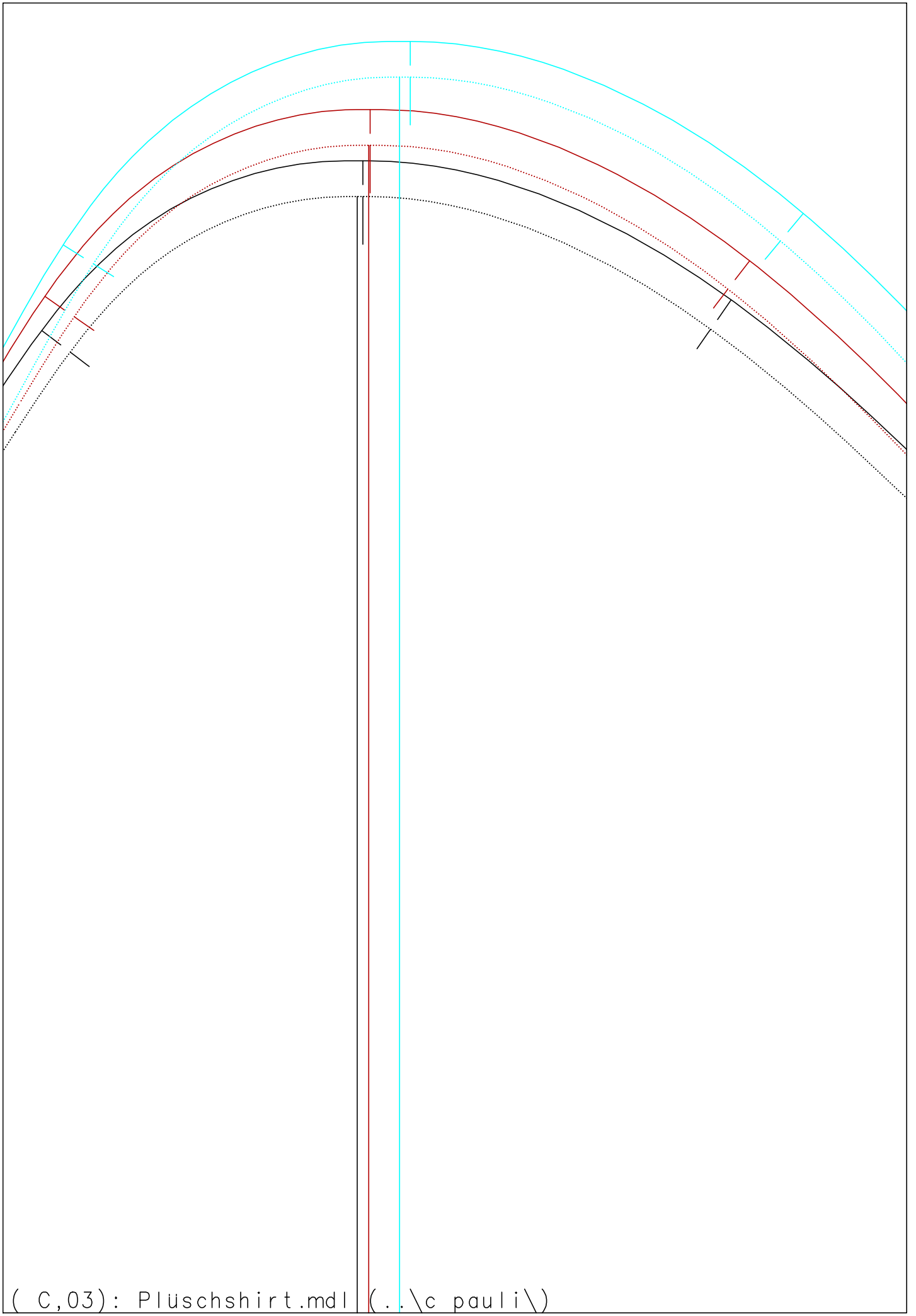
(B,04): Pluschshirt.mdl (..\c pauli\)

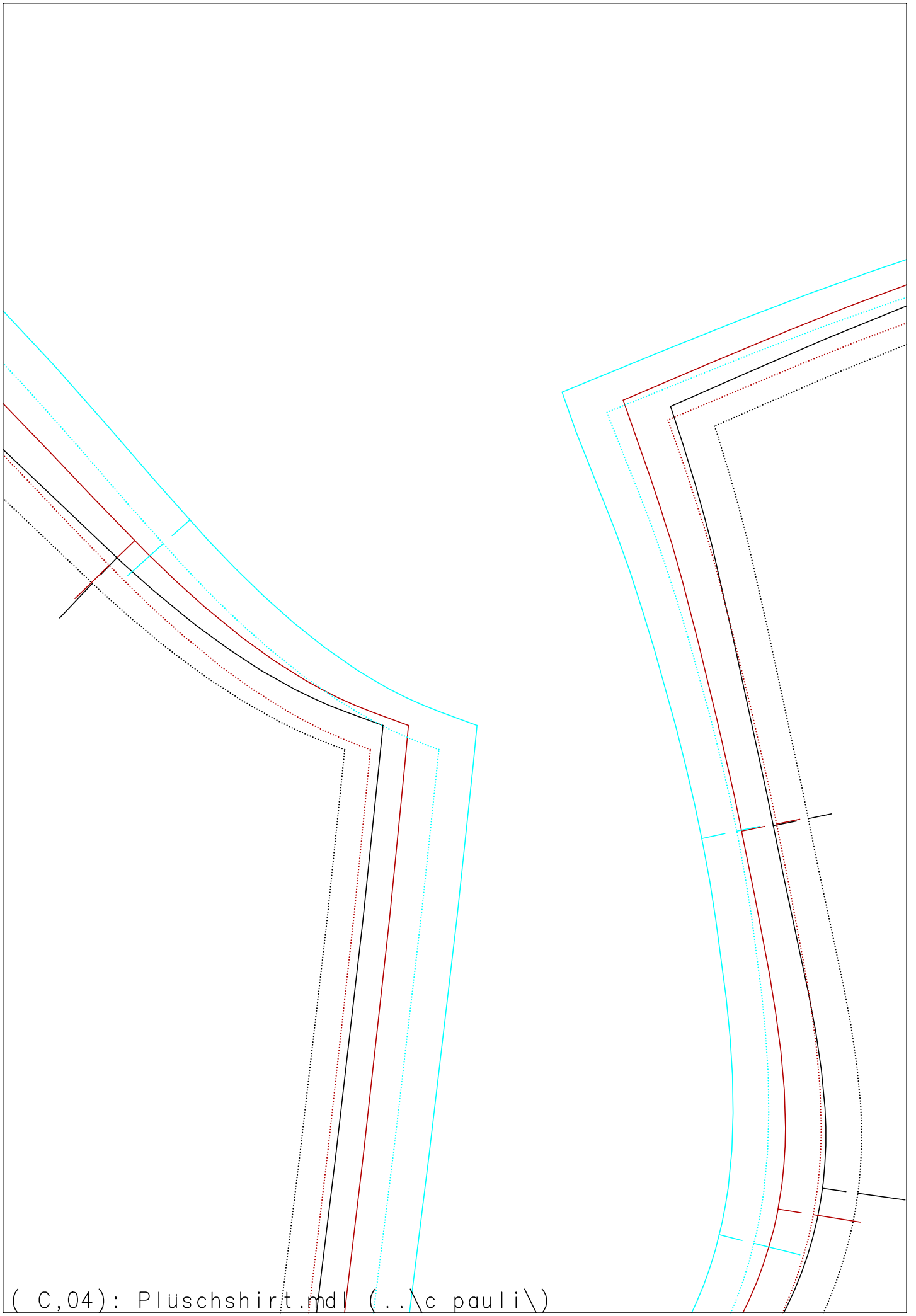
chshirt
rückenteil

hintere Mitte Bruch









(C,04): Pluschshirt.mdl (..\c pauli\)

