

Größe: 62. / 68.

Gummi Saum= 150 .mm

Größe: 74. / 80.

Gummi Saum= 160 .mm

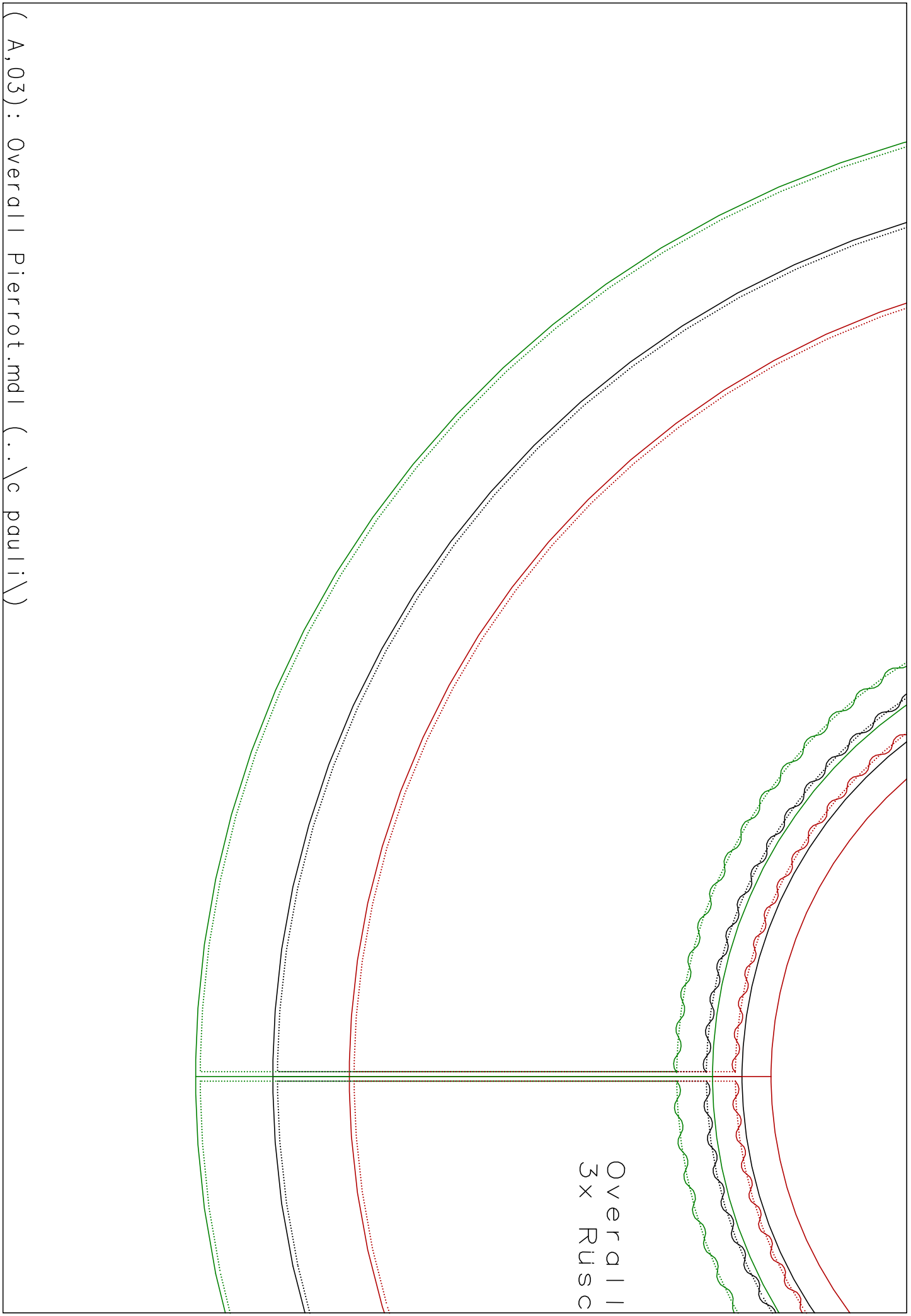
Größe: 86. / 92.

(A,01) : Overall Pierrat.mdl (..\c pauli\)

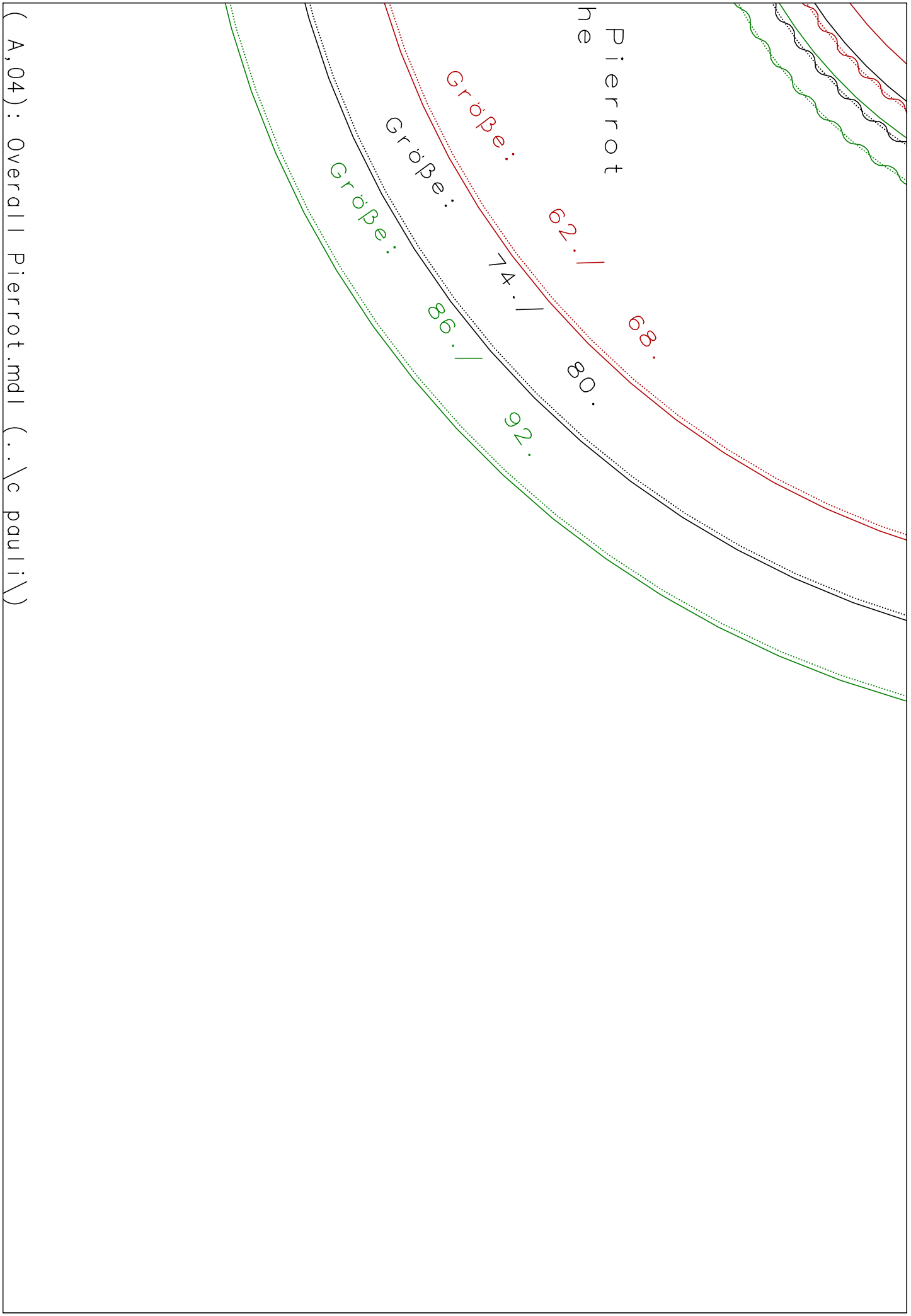
Größe: 74. / 80.

Größe: 86. / 92.

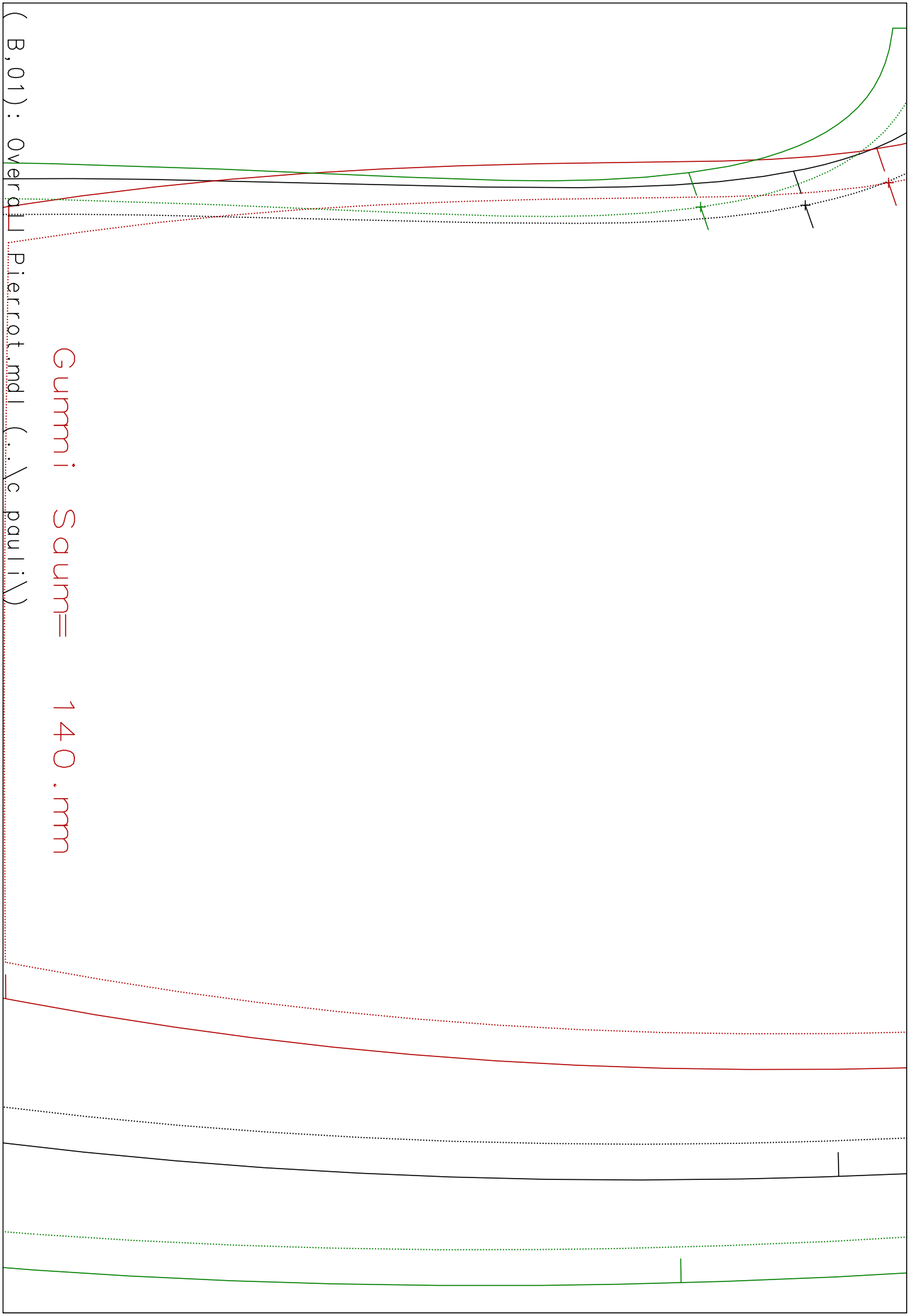
(A,02) : Overall Pierrat.mdl (..\c paulliy)



(A,03) : Overall Pierrrot.mdl (..\c pauli\)



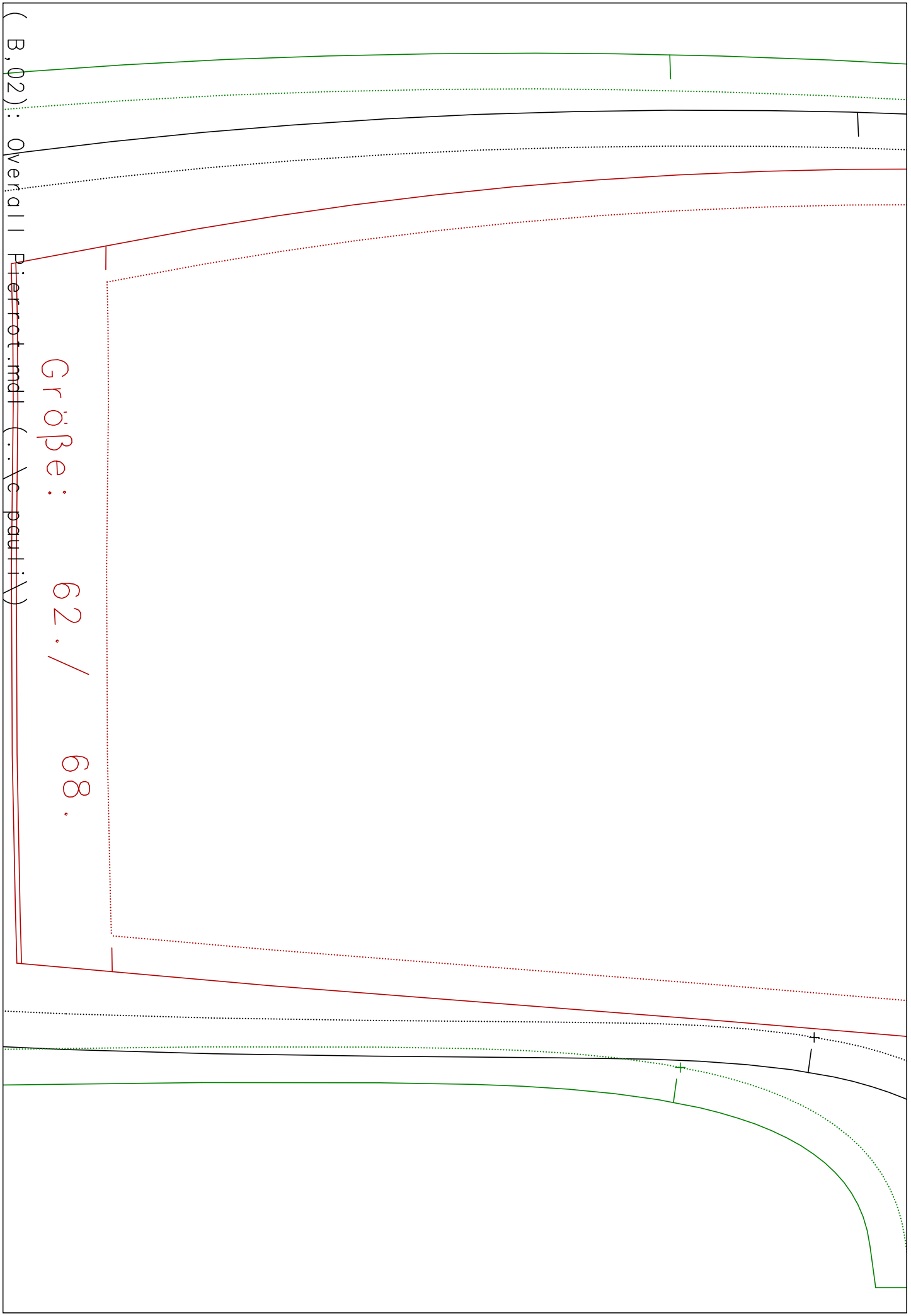
(A,04): Overall Pierrot.mdl (..\c pauli\)



(B, 01) : over d

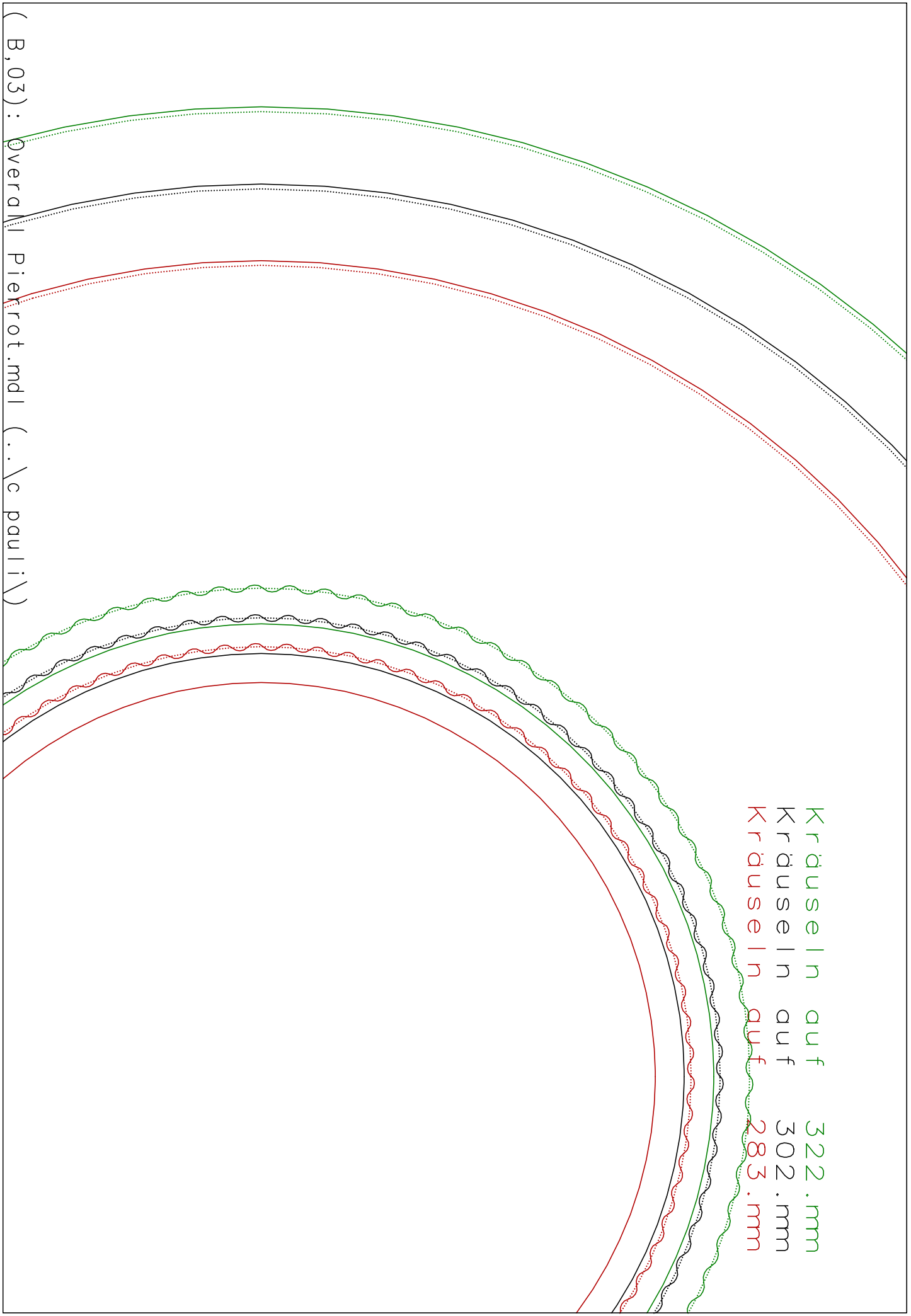
Pierrat.mdl (: \c pauli)

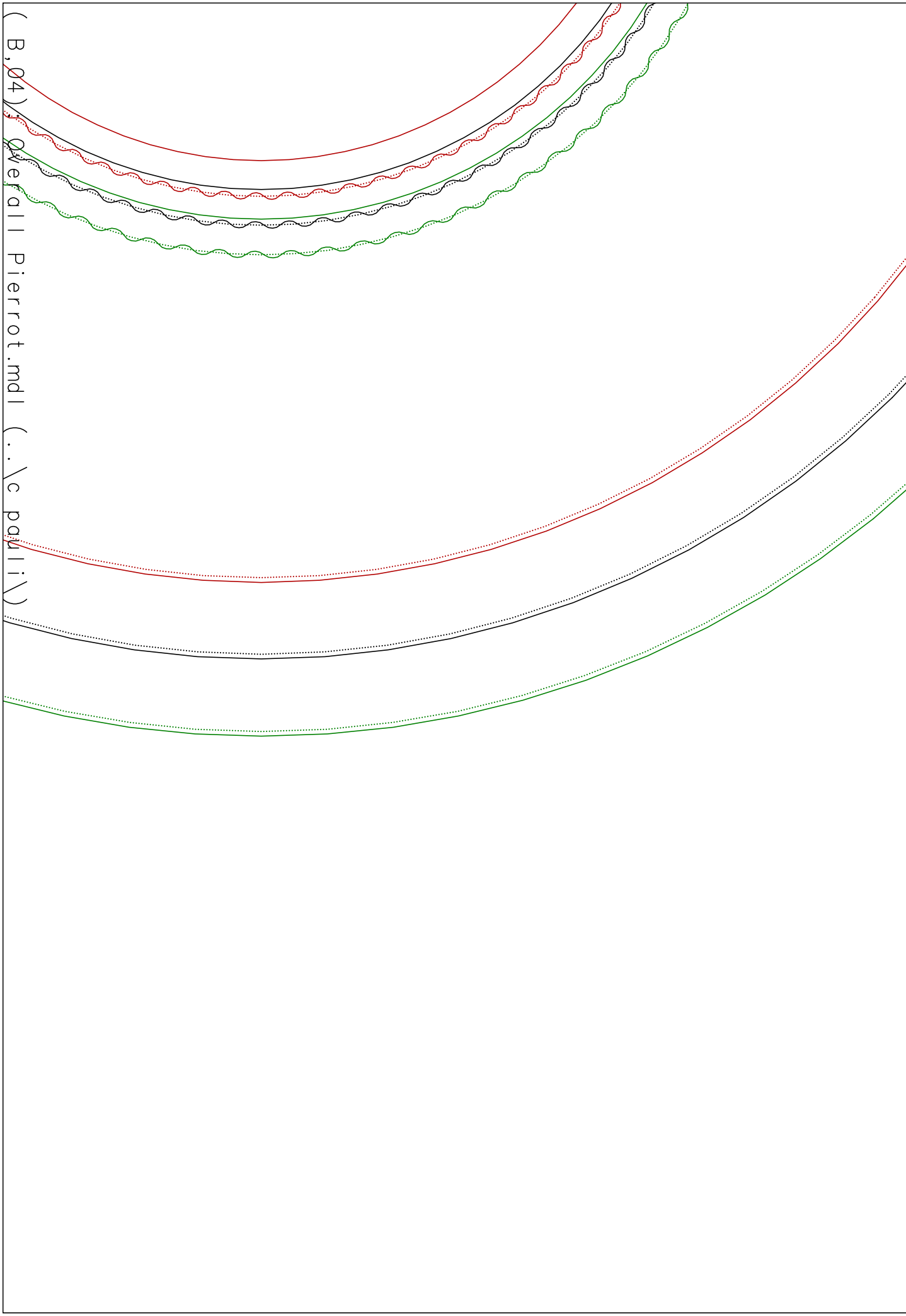
Gummi Saum= 140 . mm



(B, 02) : Overall Pierrrot.mdt (...: Ye paulliy)

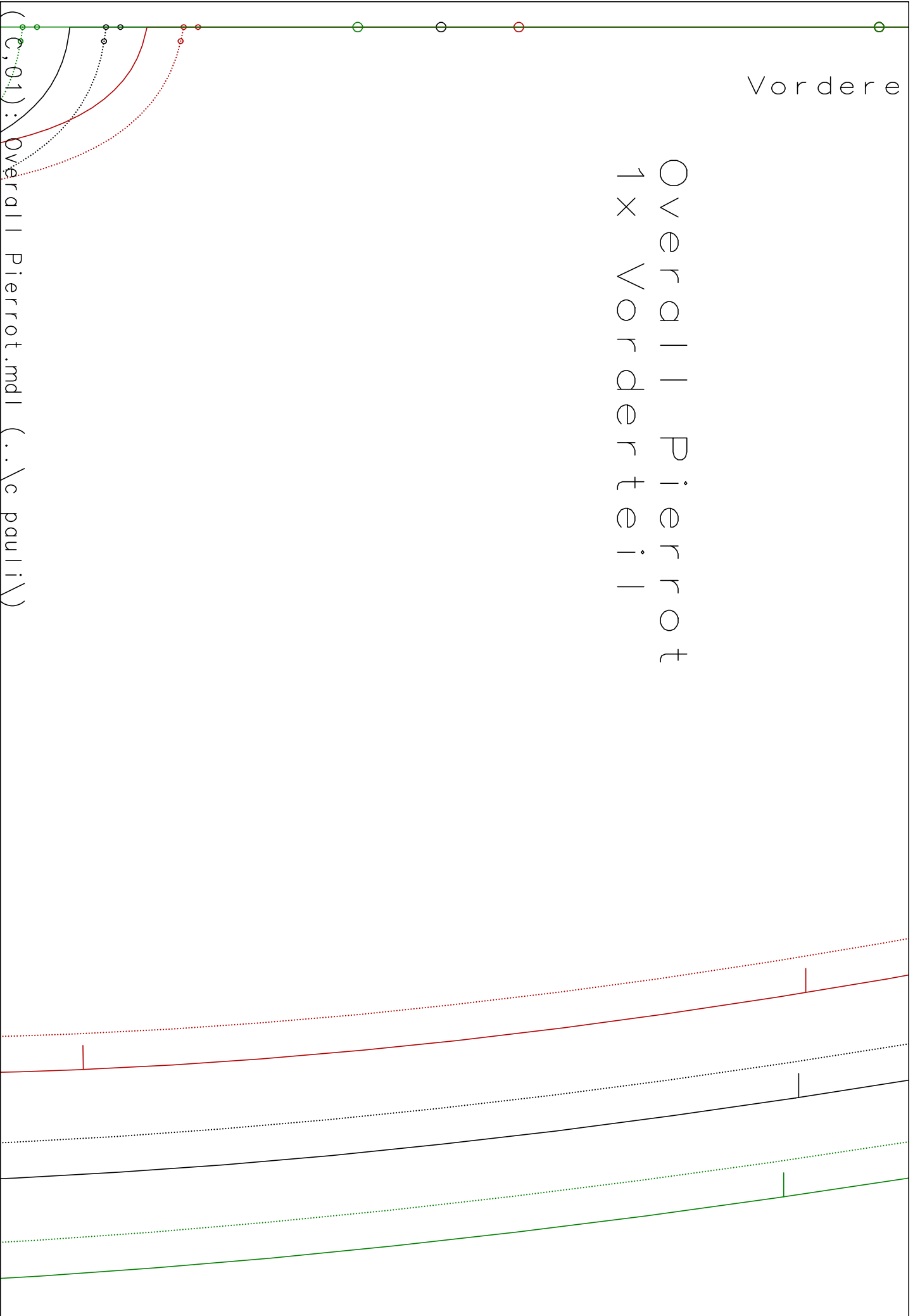
Größe: 62. / 68.



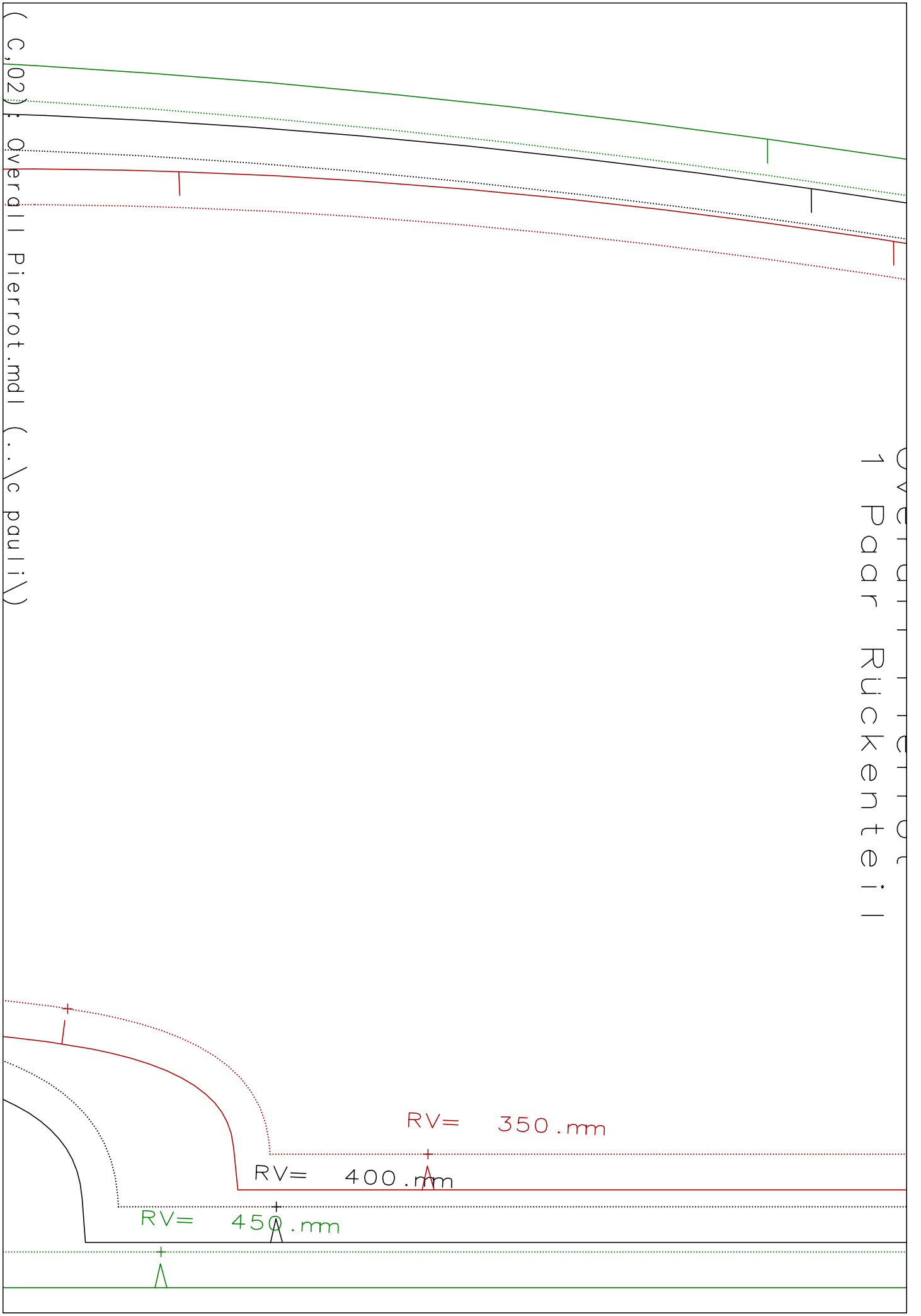


Vordere

Overall Pierrot
1x Vorderer Teil



(c,01): Overall Pierrot.mdl (..\c pauli\)

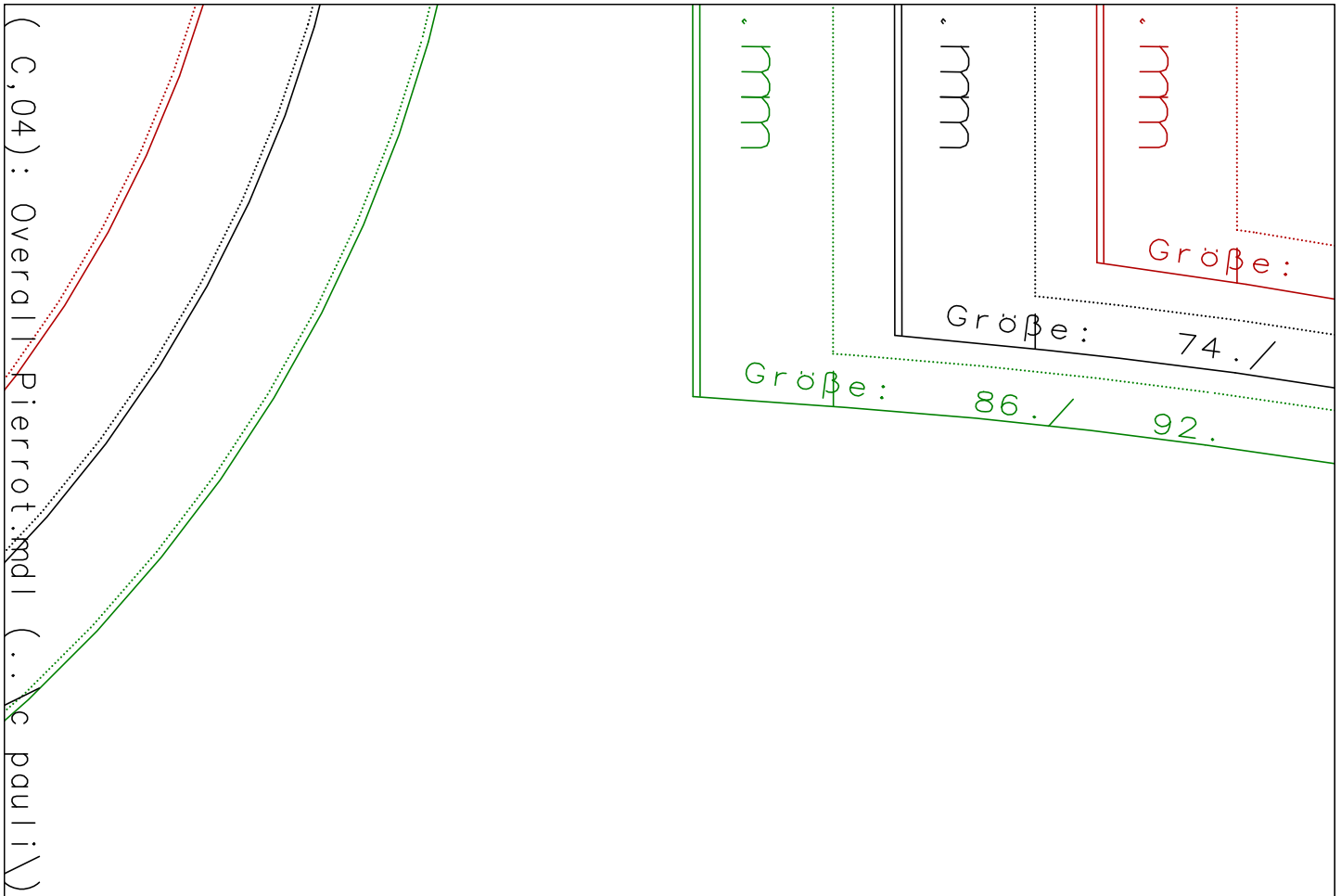


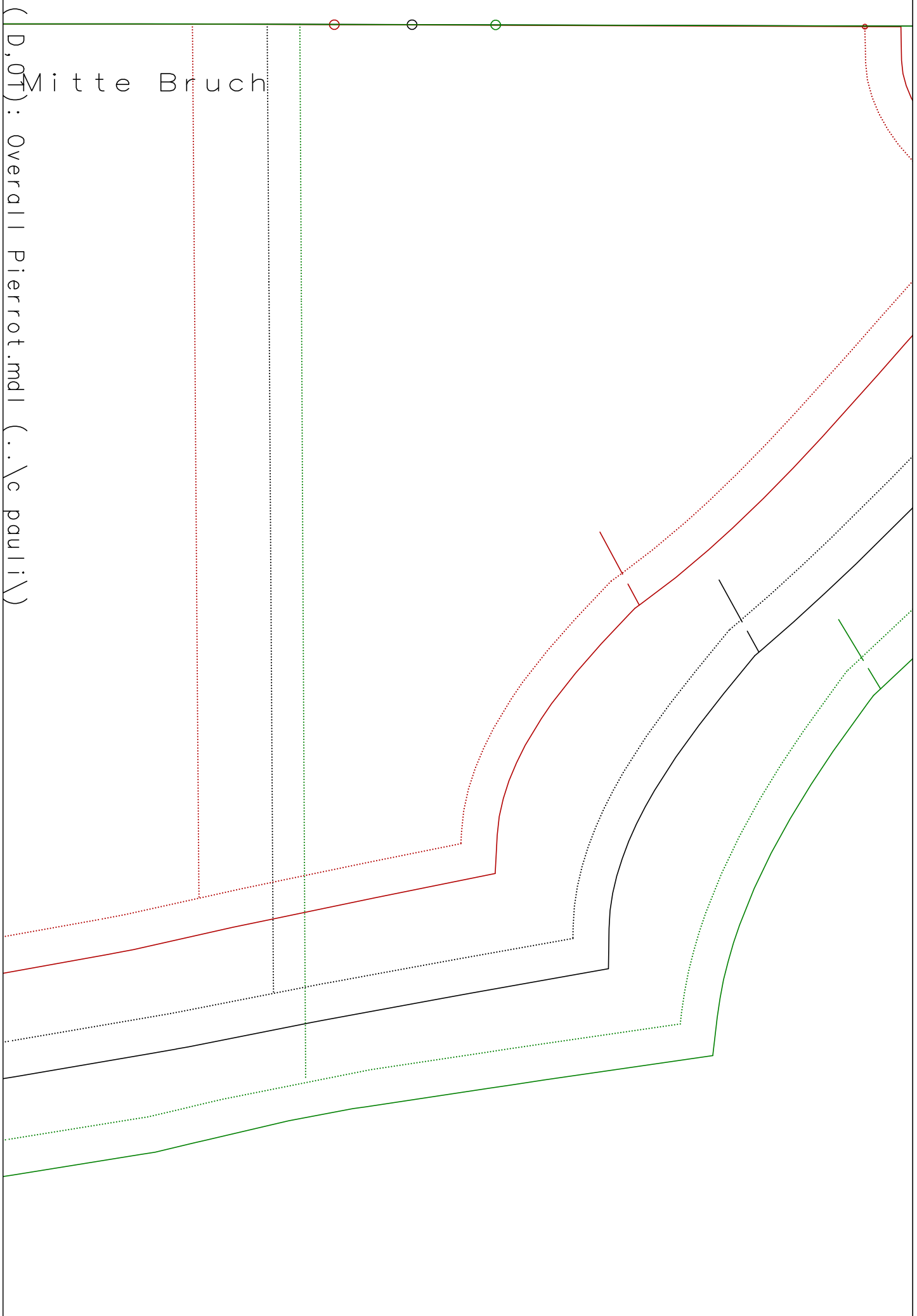
Gummi Ärmel saum= 115

Gummi Ärmel saum= 120

Gummi Ärmel saum= 125

(C,03) : Overall Pierrat mdi (~~Xc pauli~~)

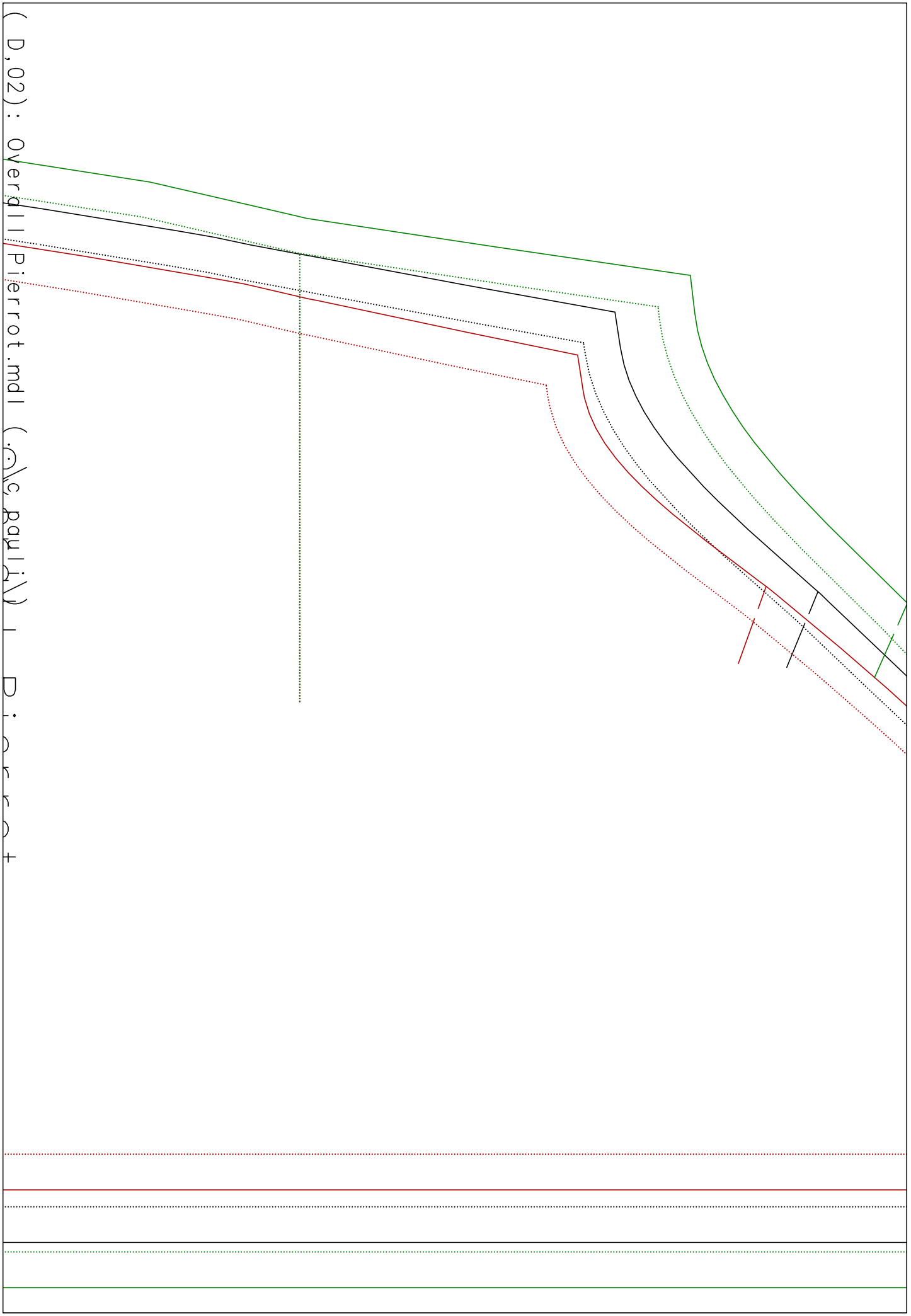


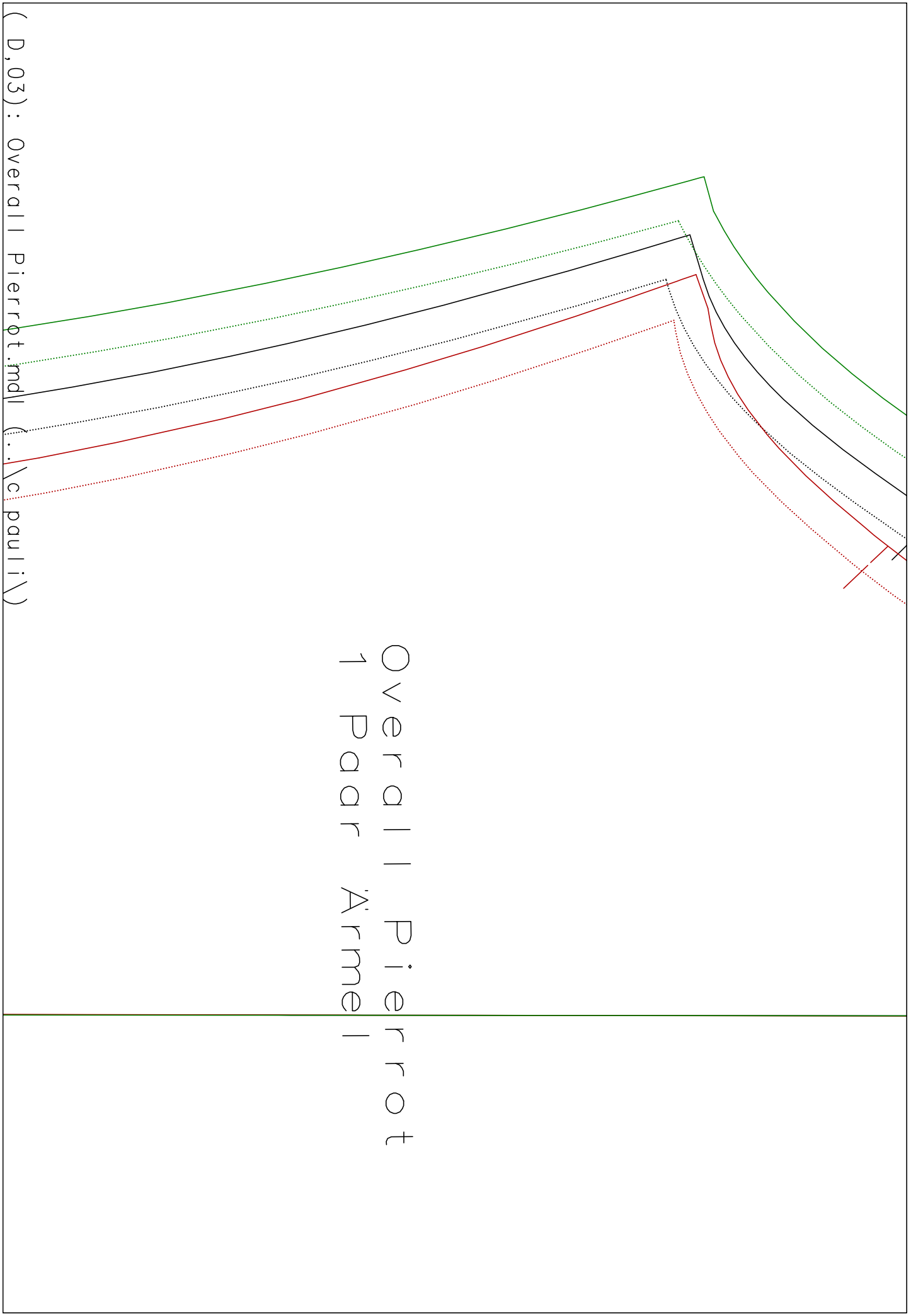


(D,OT) : Overall Pierrrot.mdl (..\c\pauli\)

Mitte Bruch

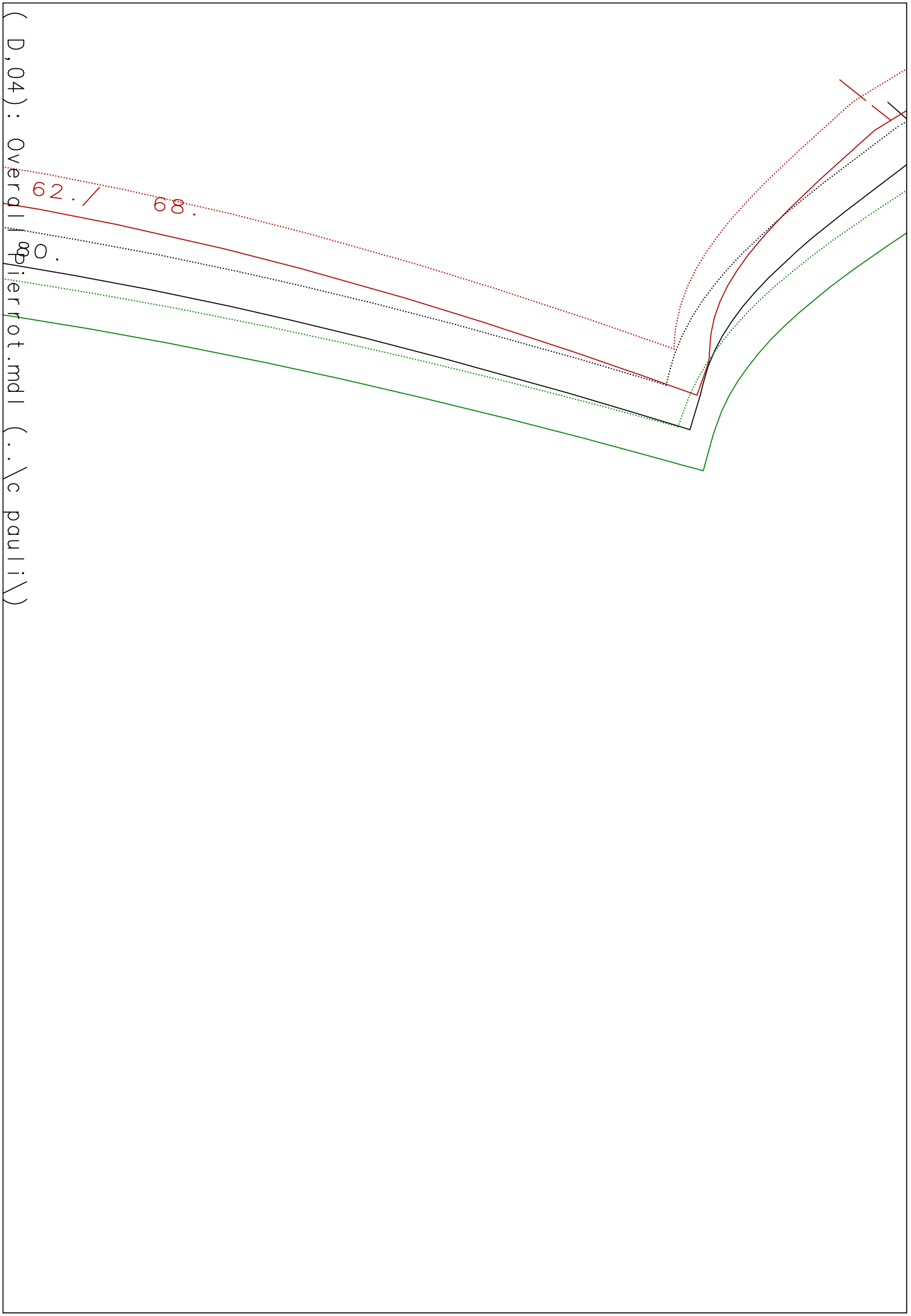
○ ○ ○ ○





Overall Pierrrot
 1 Paar Ärmel

(D,03) : Overall Pierrrot.mdl
 (...)\c\pauli\



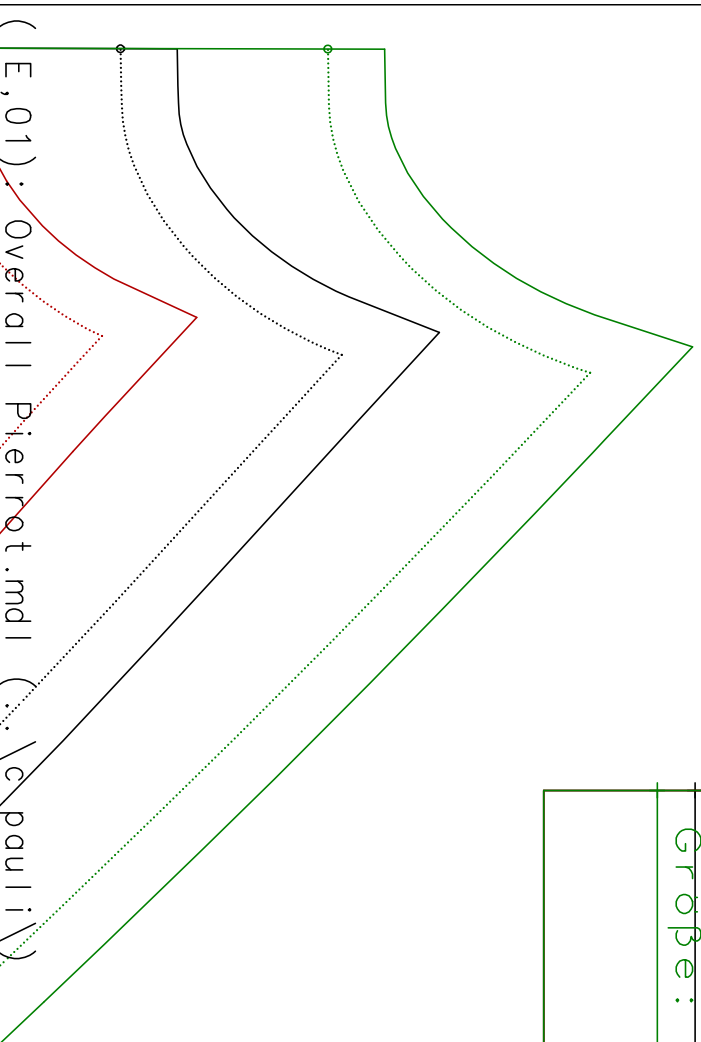
(D,04) : Overd |
Pierrot.mdl (..\c pauli)

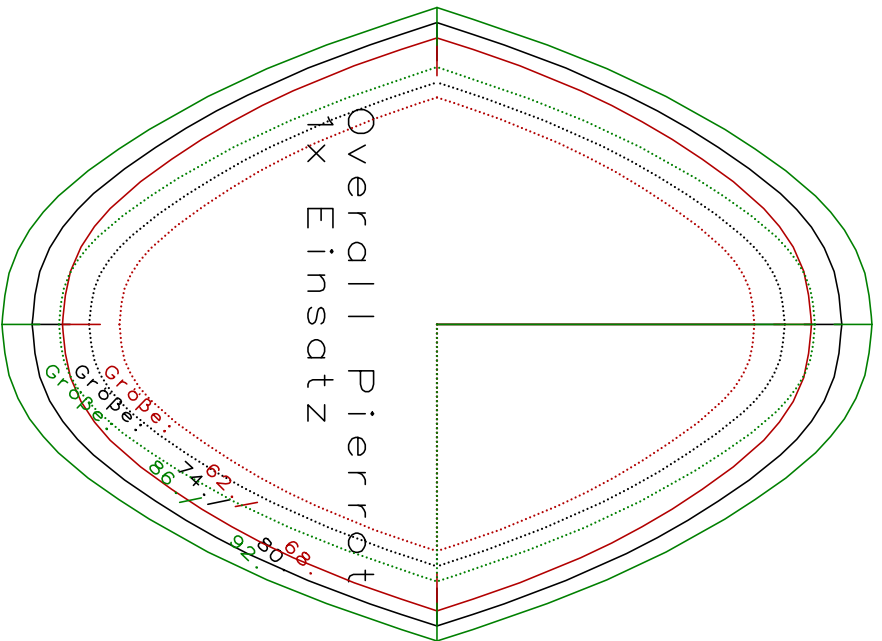
Zur eigenen Sicherheit:
Kontrollfenster nachmessen!
Seitenlänge 10 cm
4 inches

~~Größe: 62./~~ 68.

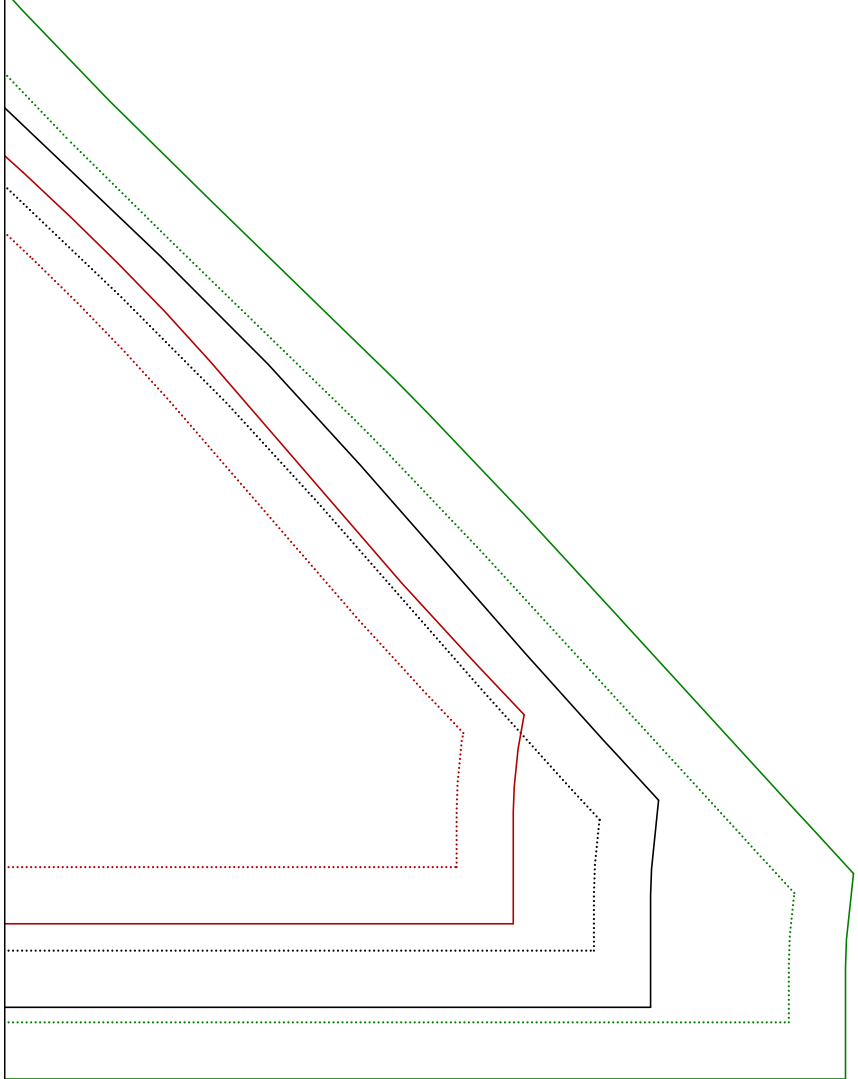
~~Größe: 74./~~ 80.

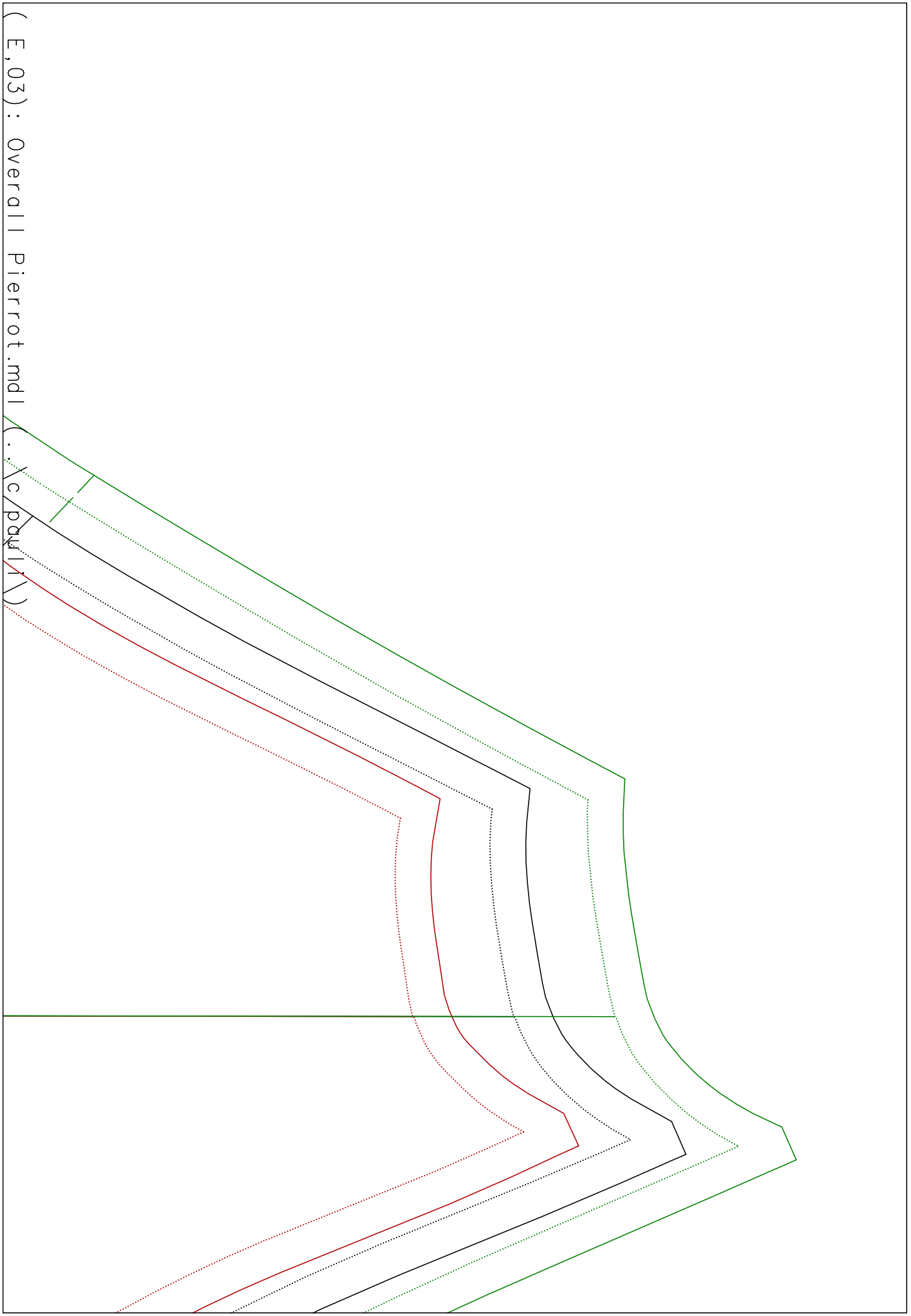
~~Größe: 86./~~ 92.





(E,02): Overall Pierrot.mdl (..\c pauli\)





(E,03) : Overall Pierrot.mdl

(.. \c paul)

()

