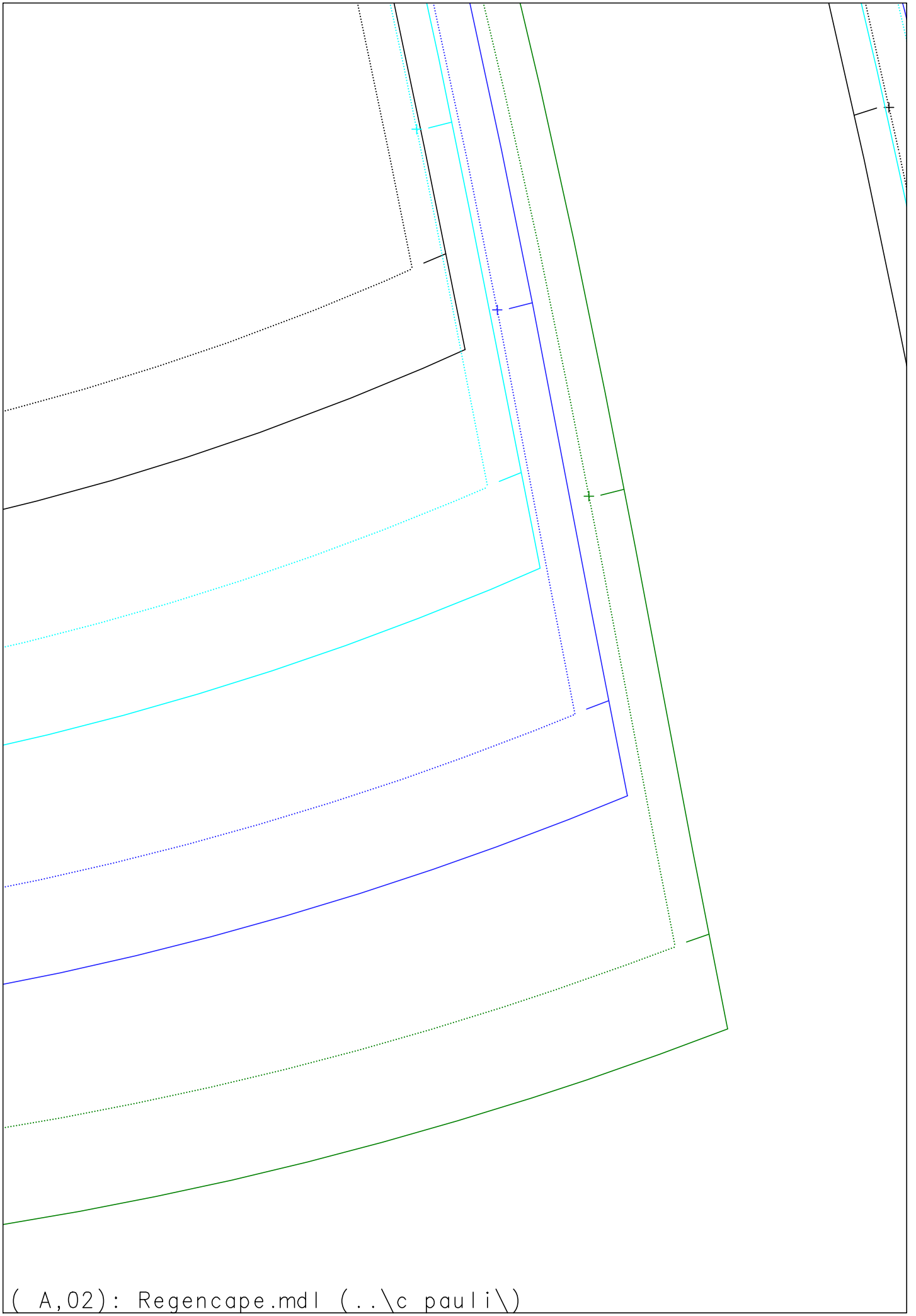


Größe: 86. / 92.

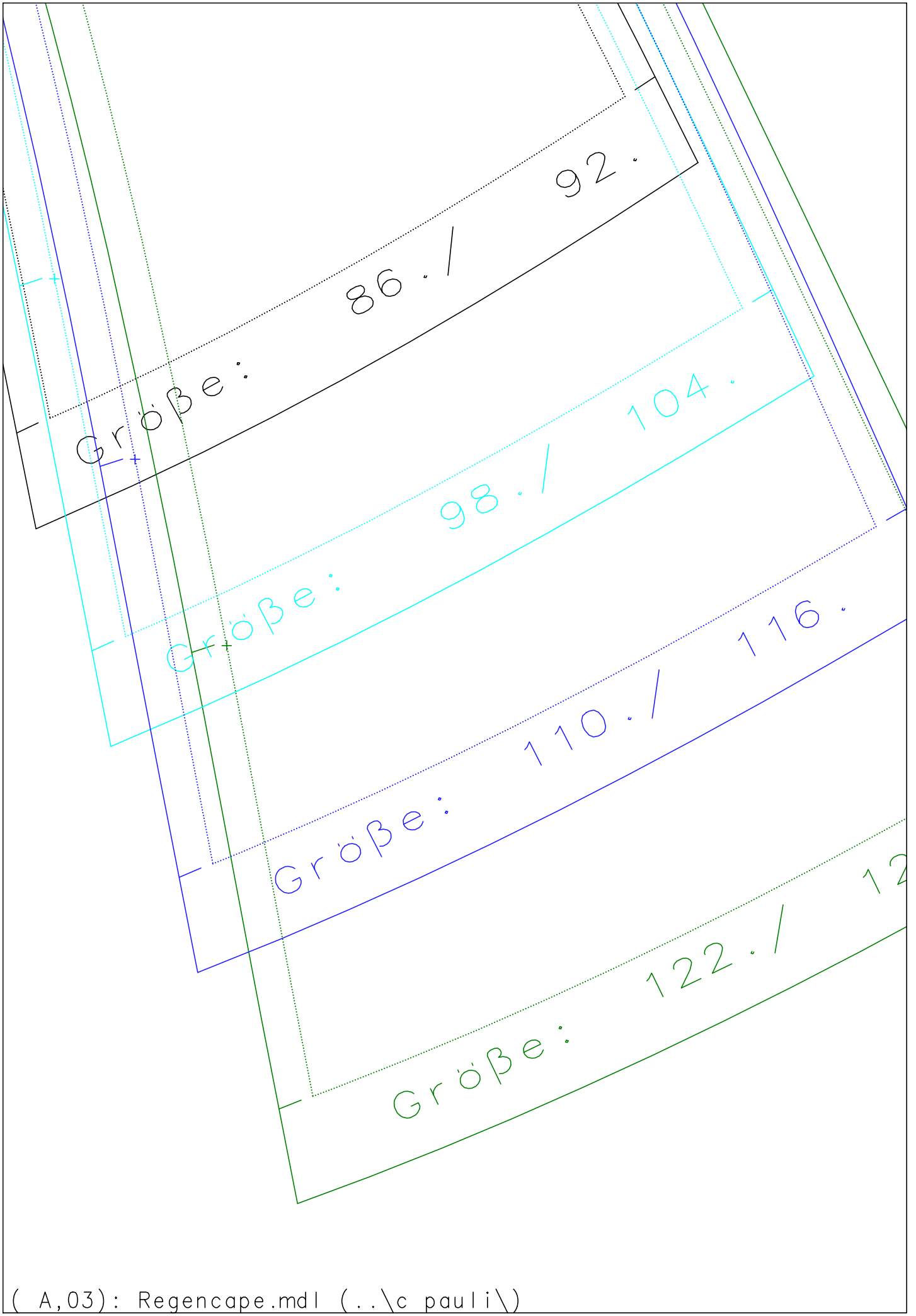
Größe: 98. / 104.

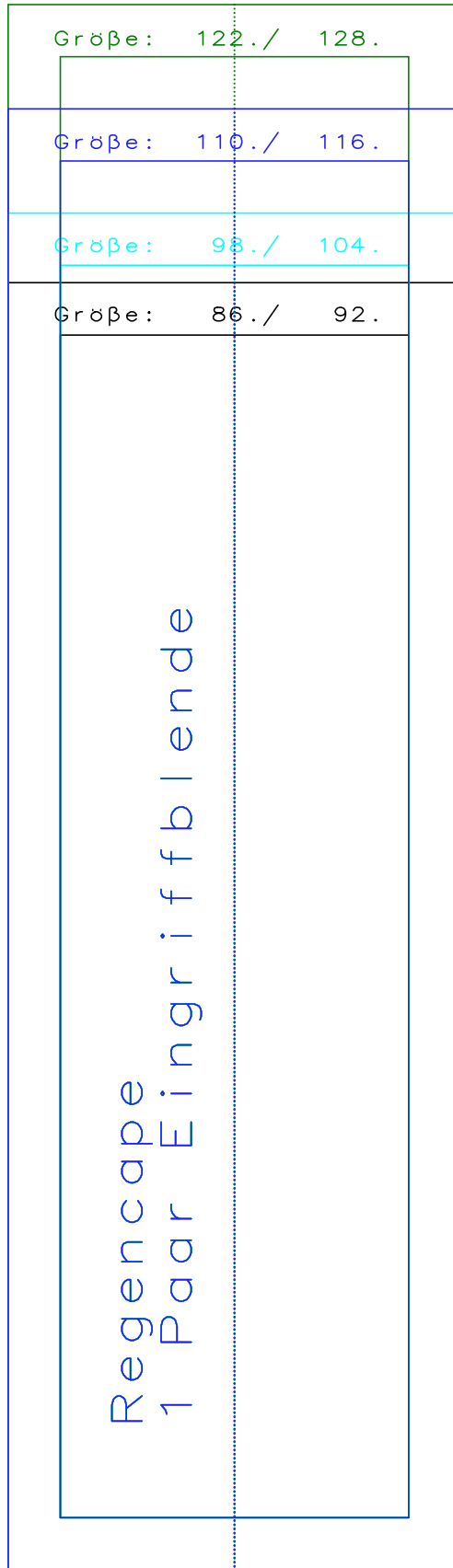
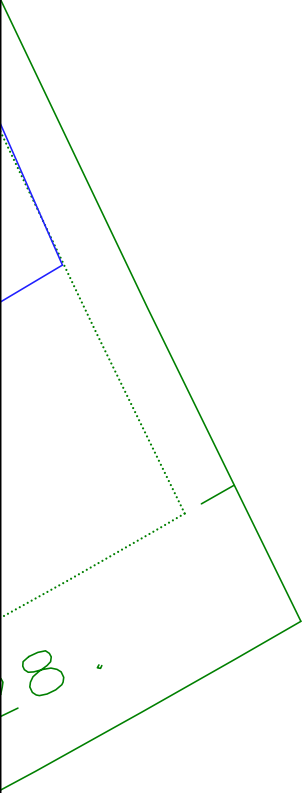
Größe: 110. / 116.

Größe: 122. / 128.



( A,02): Regencape.mdl (..\c pauli\)





Zur eigenen Sicherheit:  
Kontrollfenster nachmessen!

Seitenlänge 10 cm  
4 inches

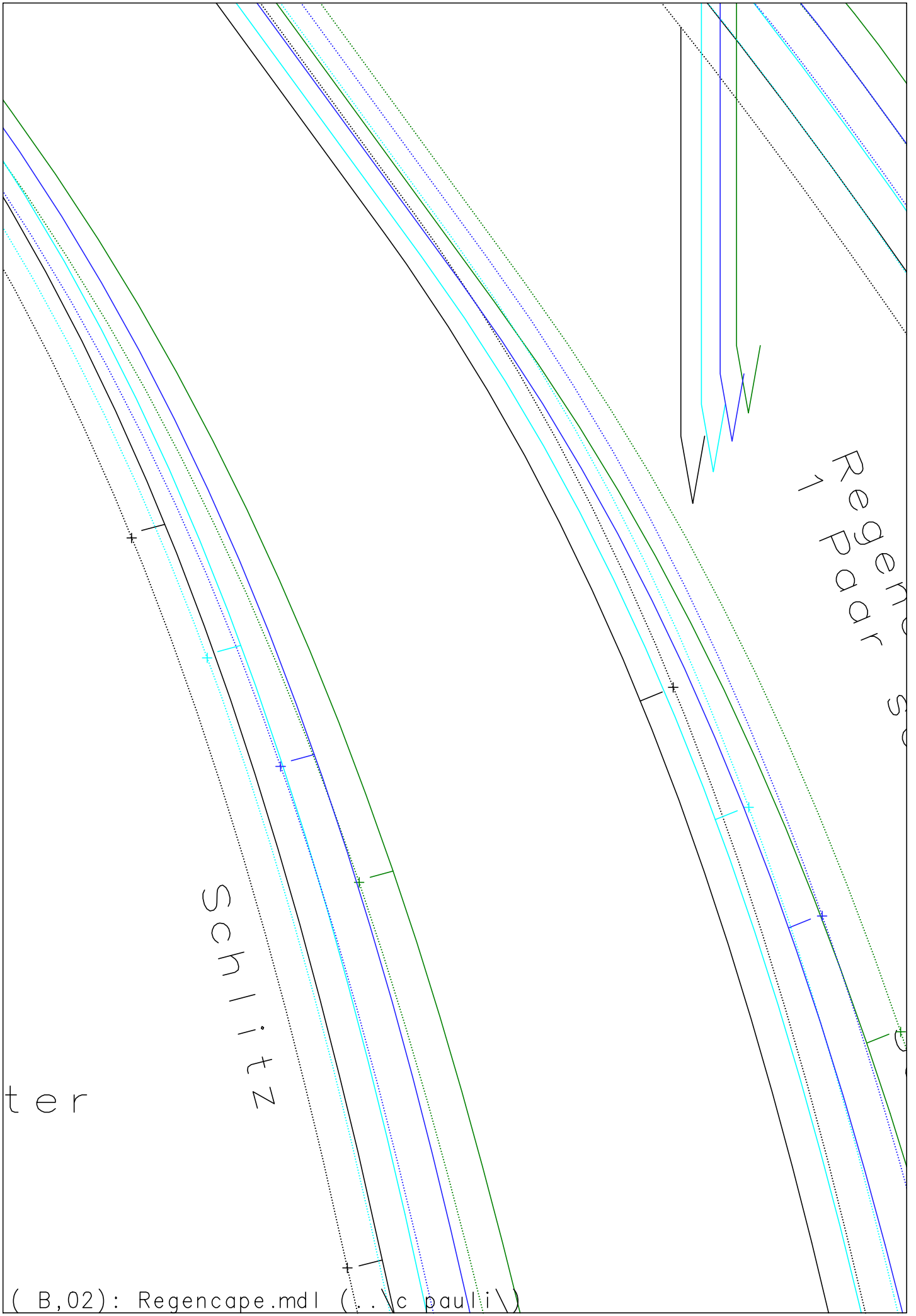
Größe: 86./ 92.

Größe: 98./ 104.

Größe: 110./ 116.

Größe: 122./ 128.

Regencape  
1 Paar mittl. Vt Fut



ter

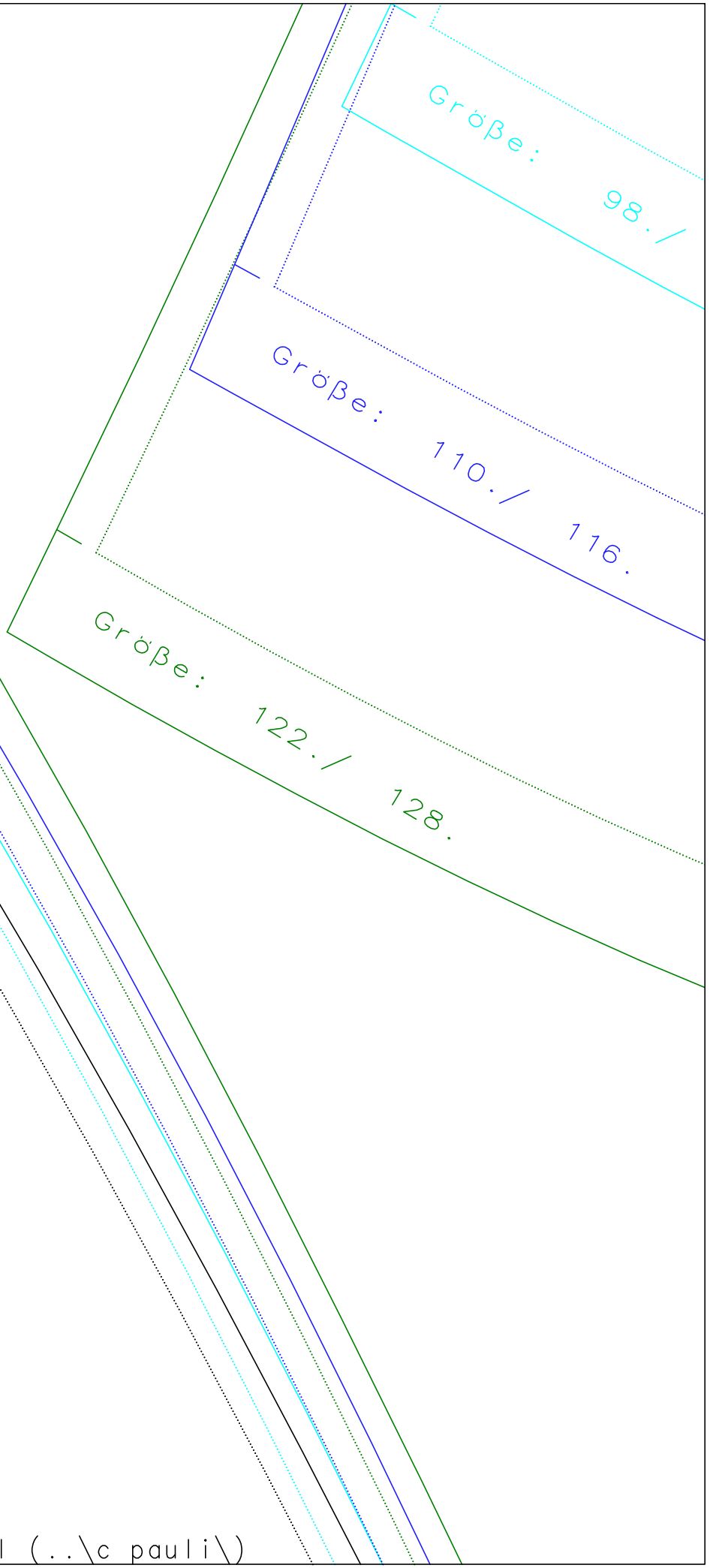
Schlitz

Regen  
paar  
s

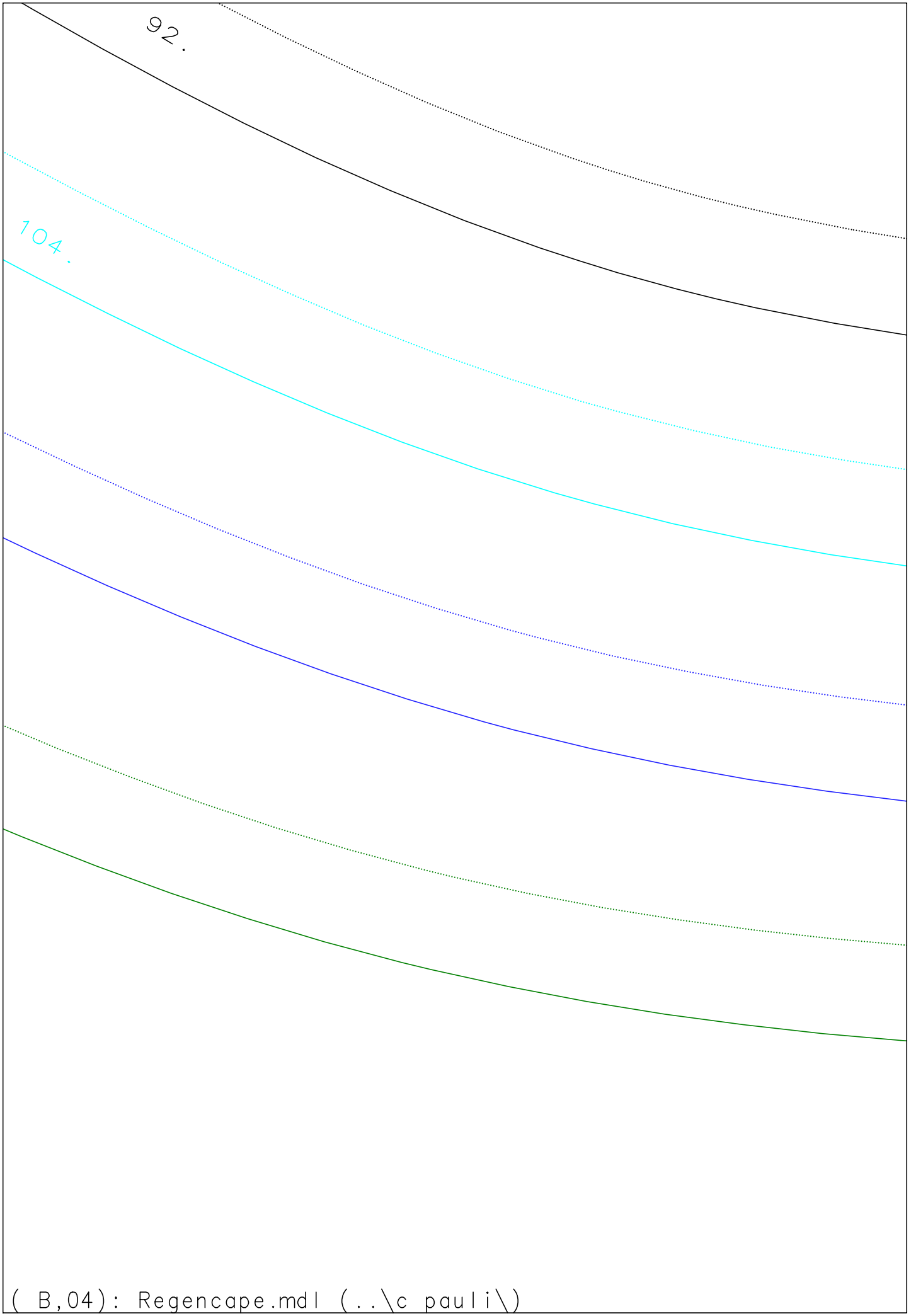
cappeit.

√t Futter

schlitz







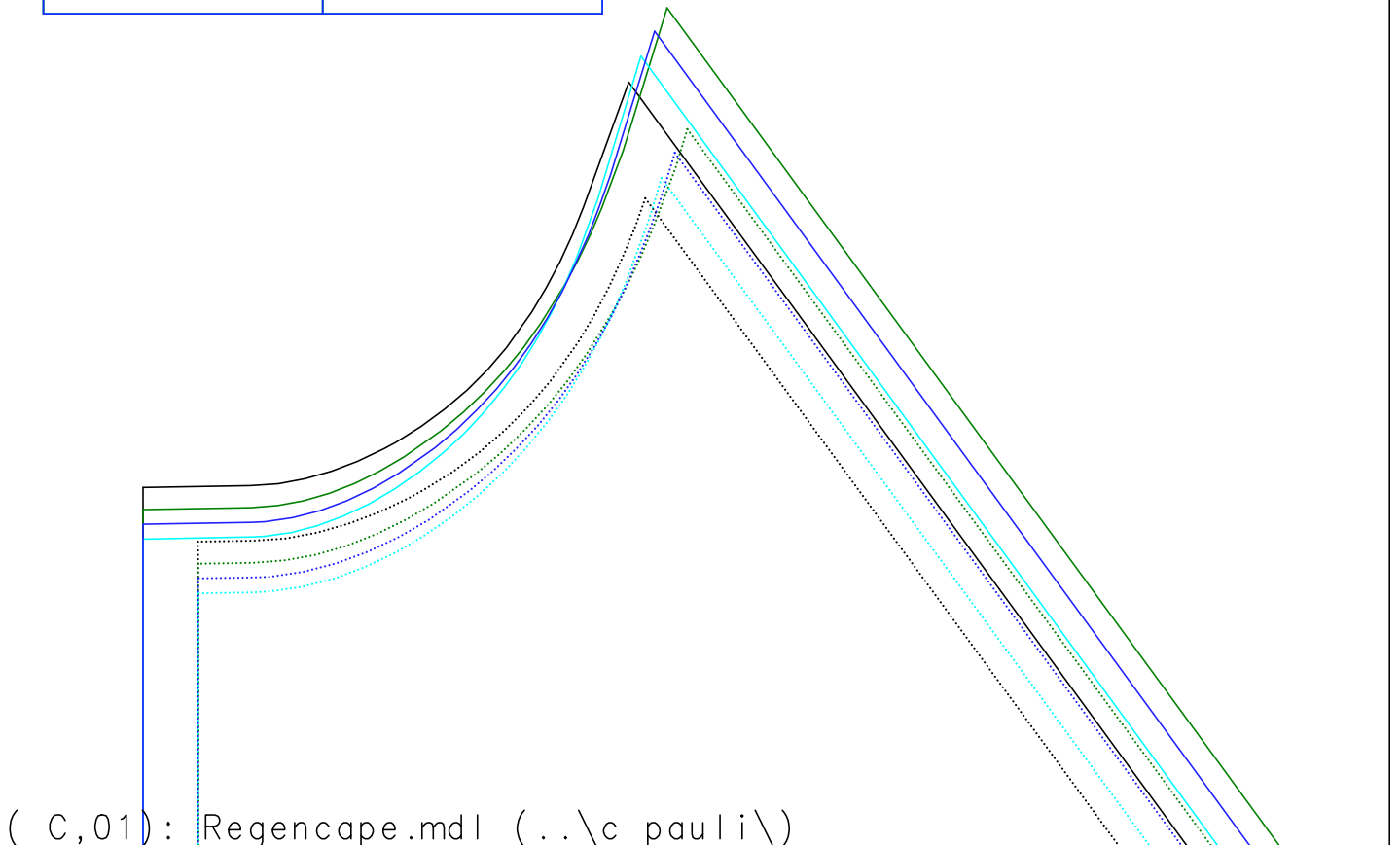
Schnittkante Futter

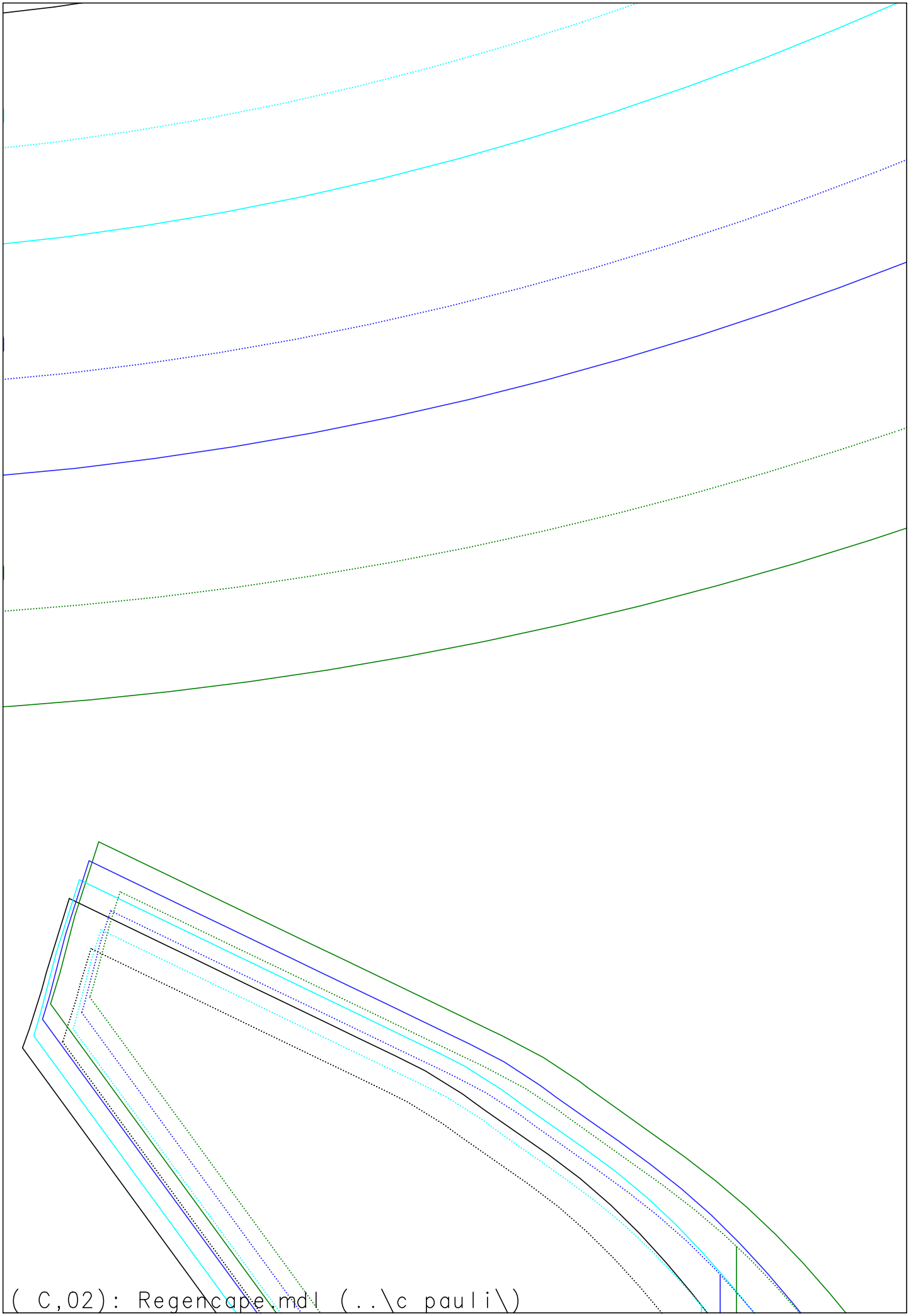
Regen  
1 x RV

V +  
RV = 500 .mm

V +  
RV = 550 .mm

V +  
RV = 600 .mm



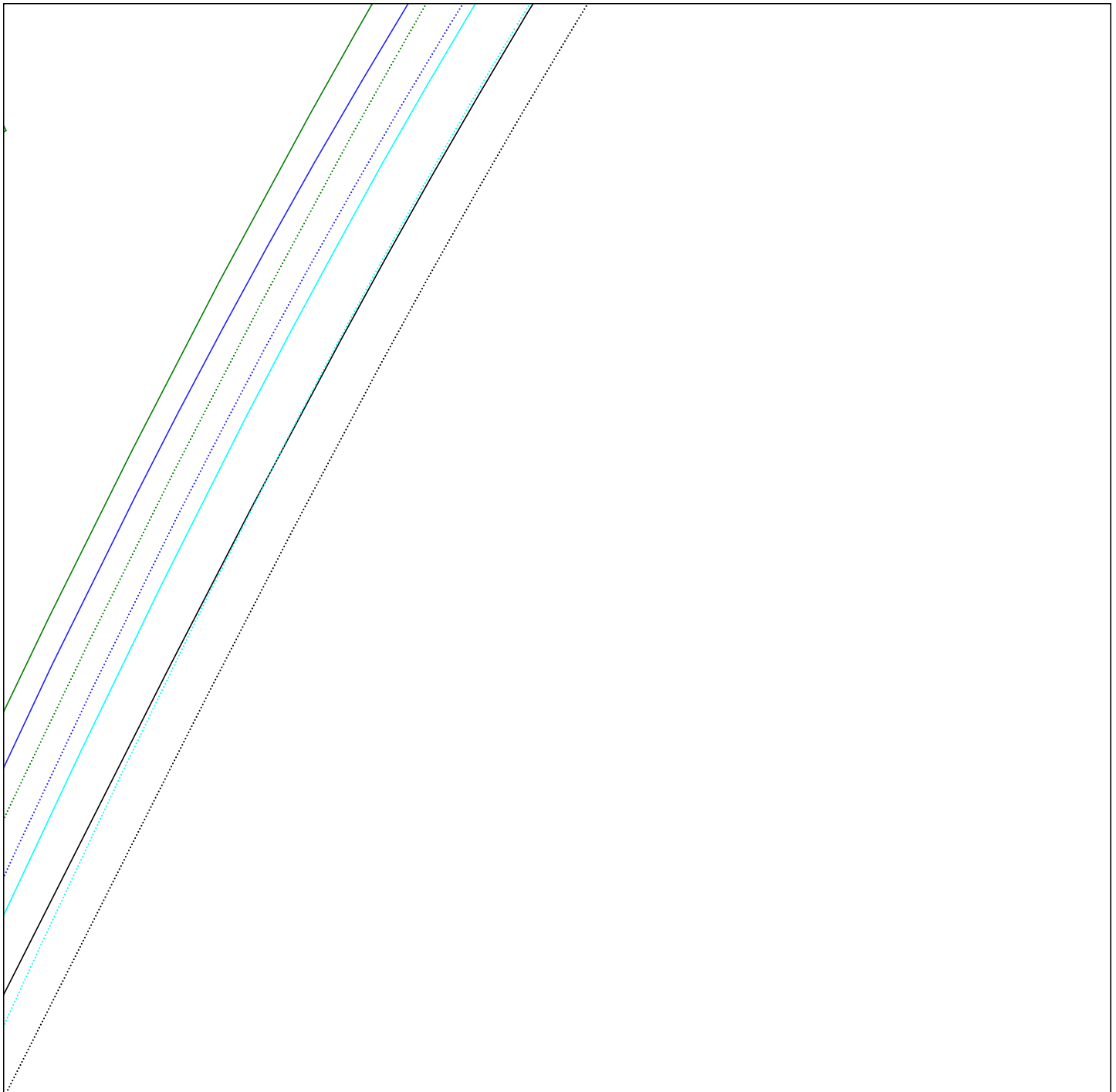


( C,02): Regencape.mdl (..\c pauli\)

Größe:

Größe: 122./ 128.

Größe:



Regencape  
1x Rückentei

l + Futter

hintere Mitte Bruch Fa

Rege  
1 Pa

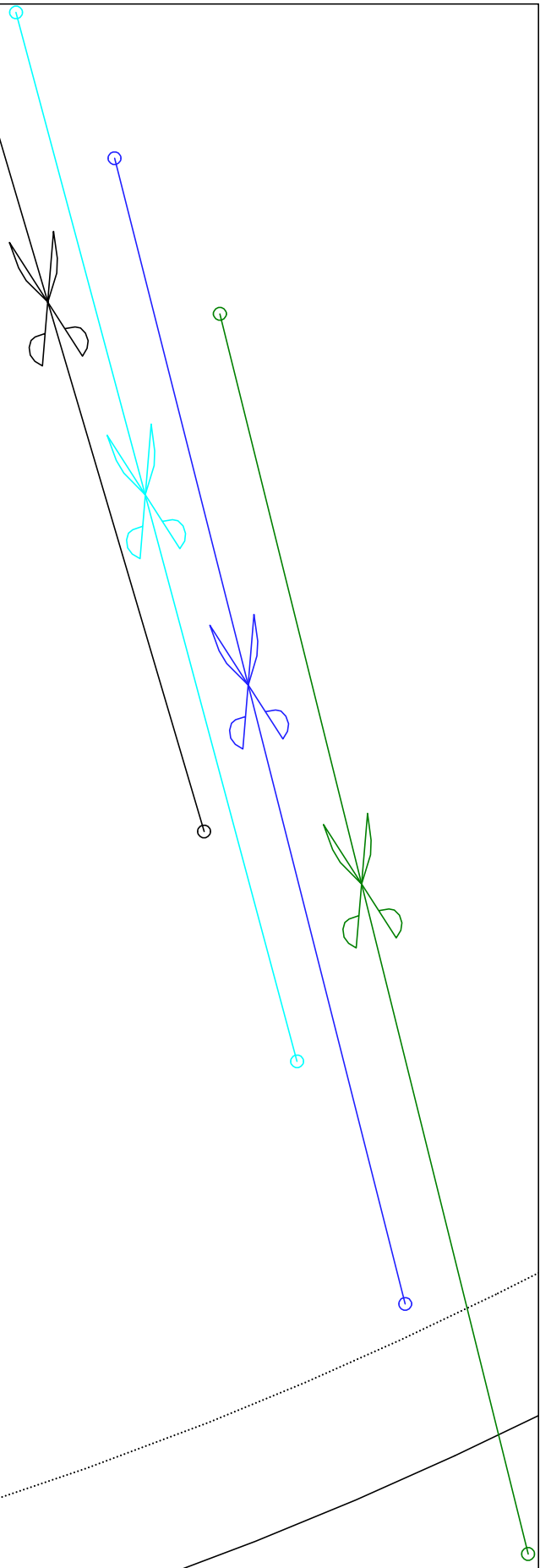
Blende

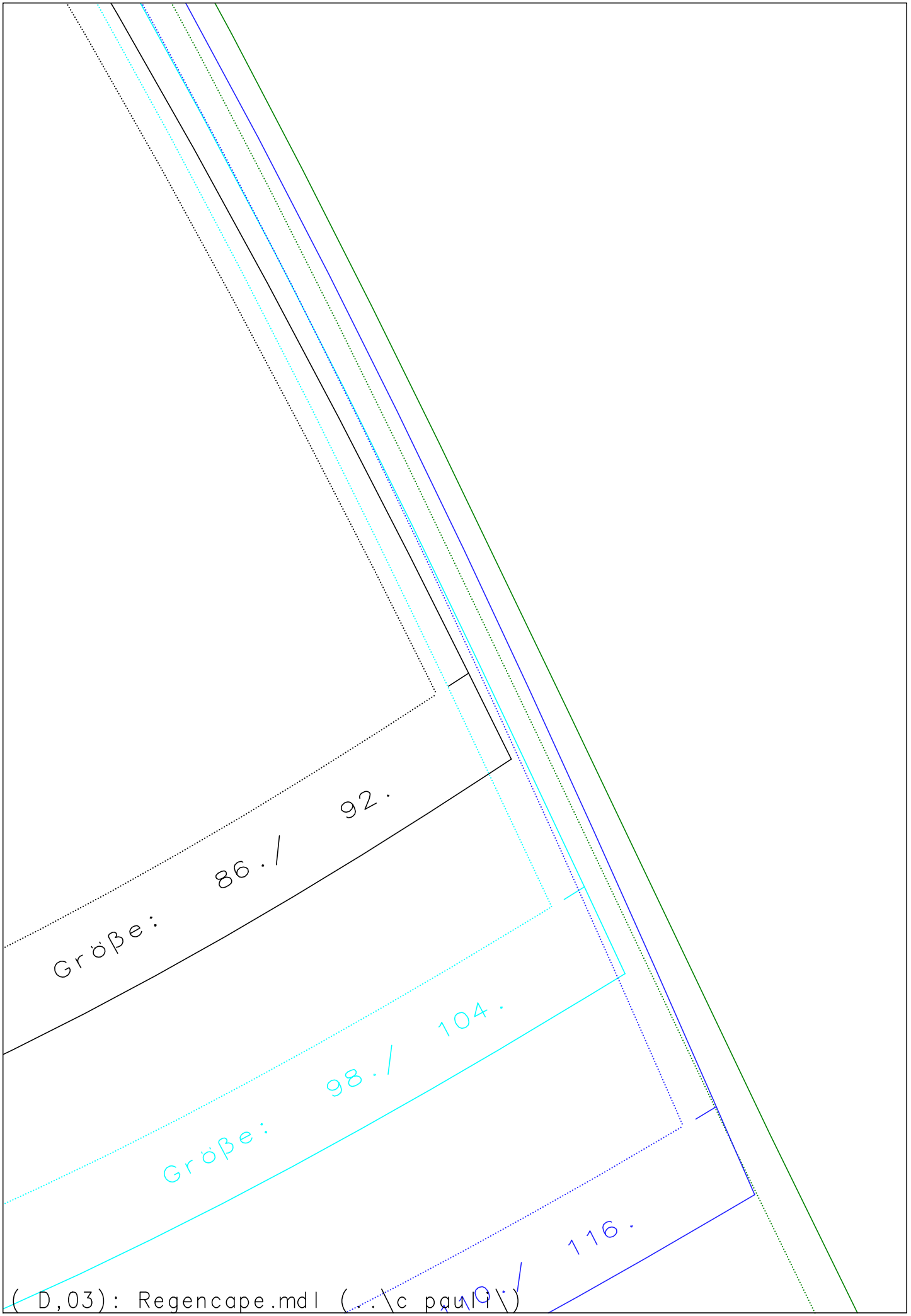
V

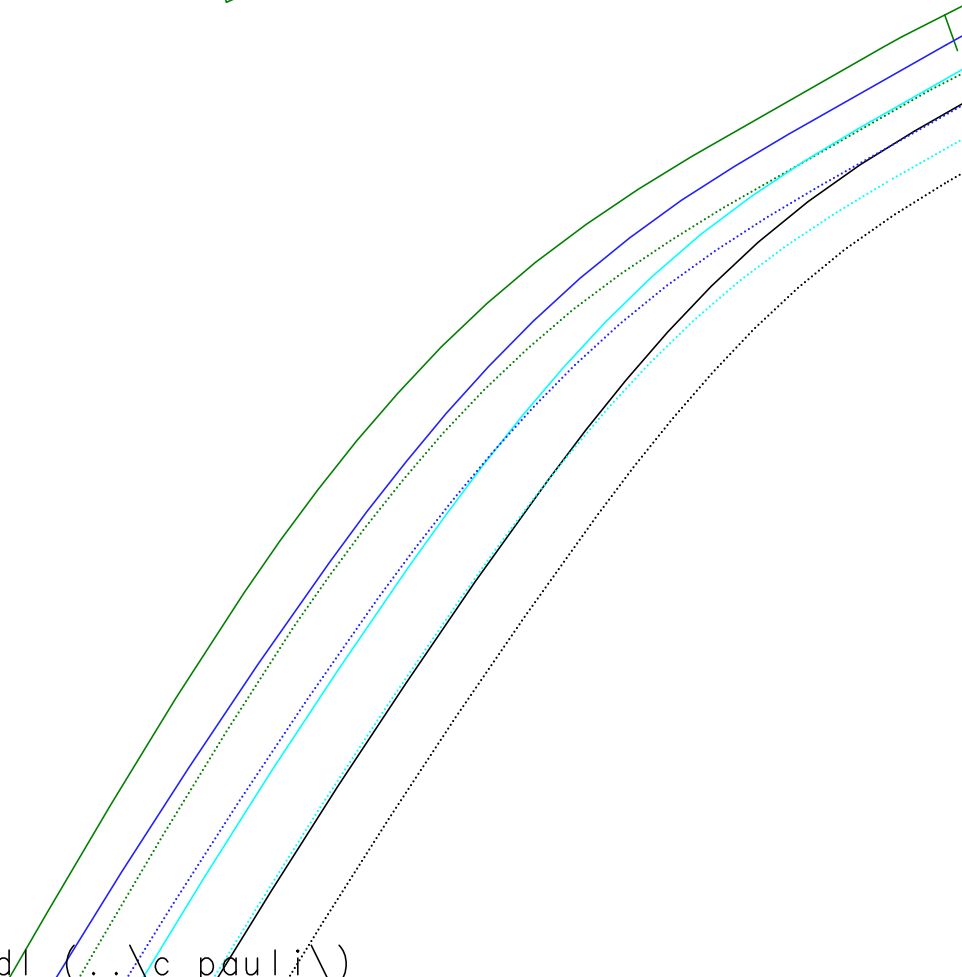
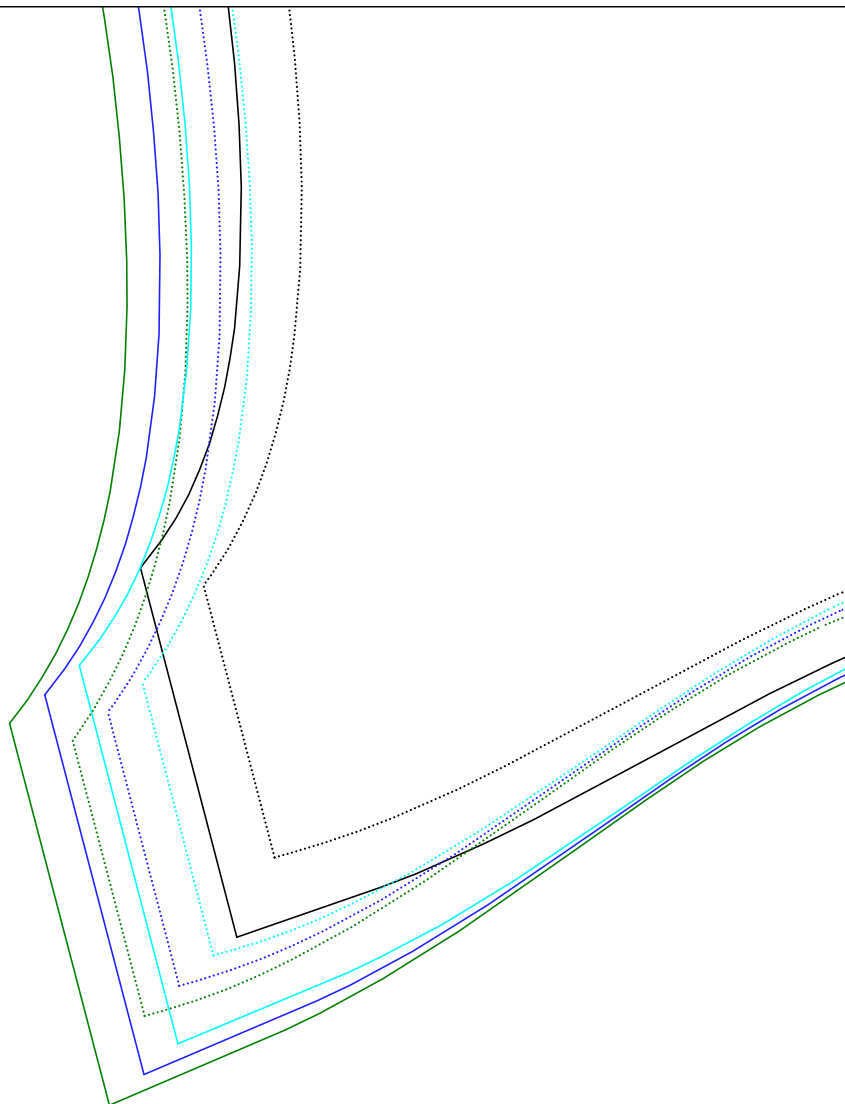
RV = 450 . mm

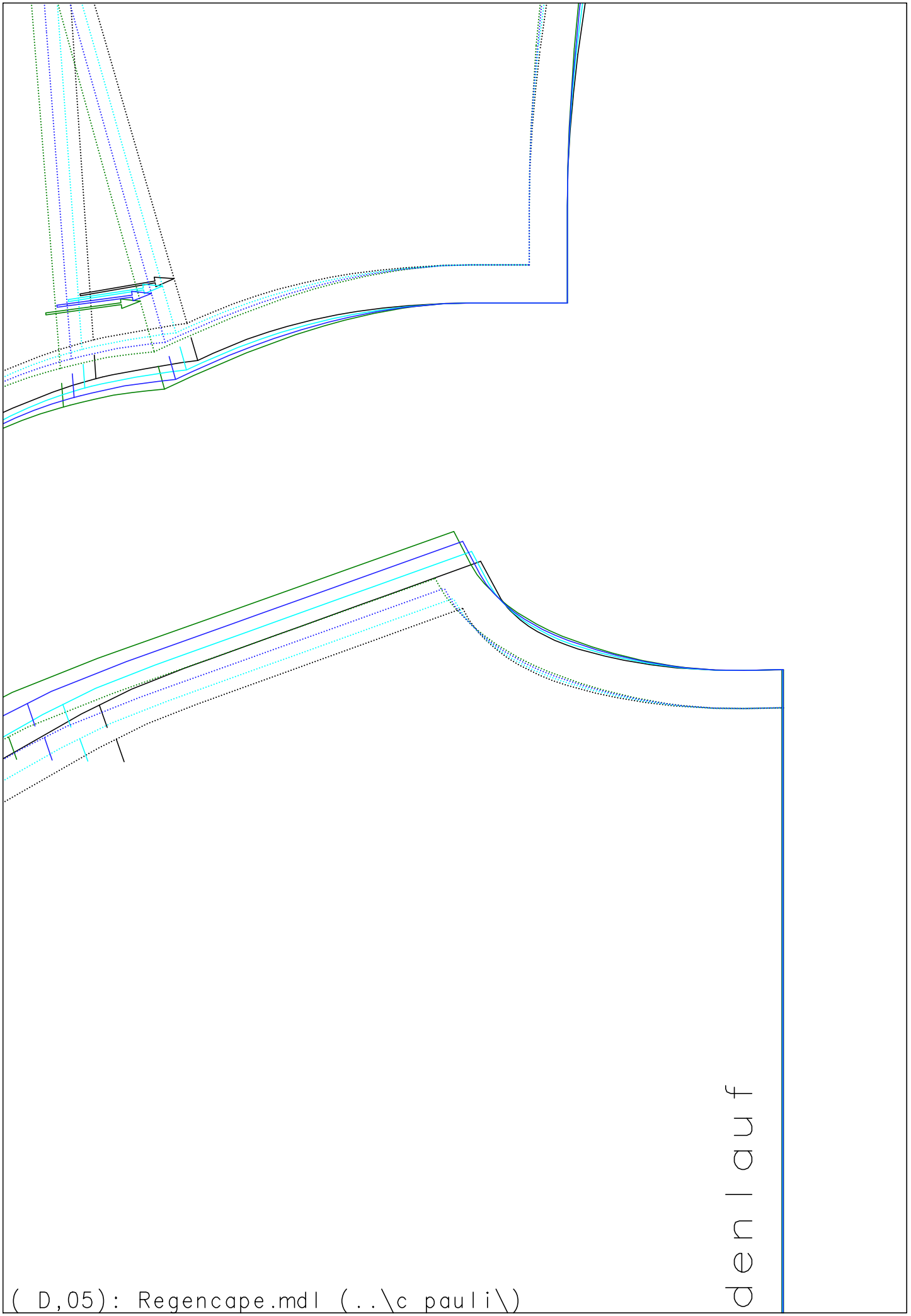


Regencape  
Vorderteil









( D,05): Regencape.mdl (..\c\_pauli\)

denlauf

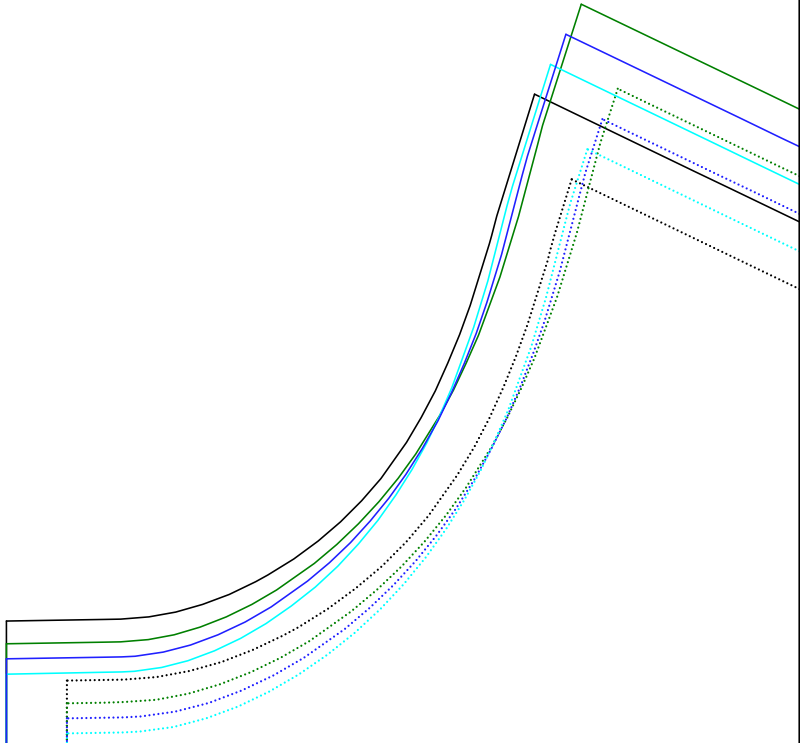
Größe: 122./ 128.

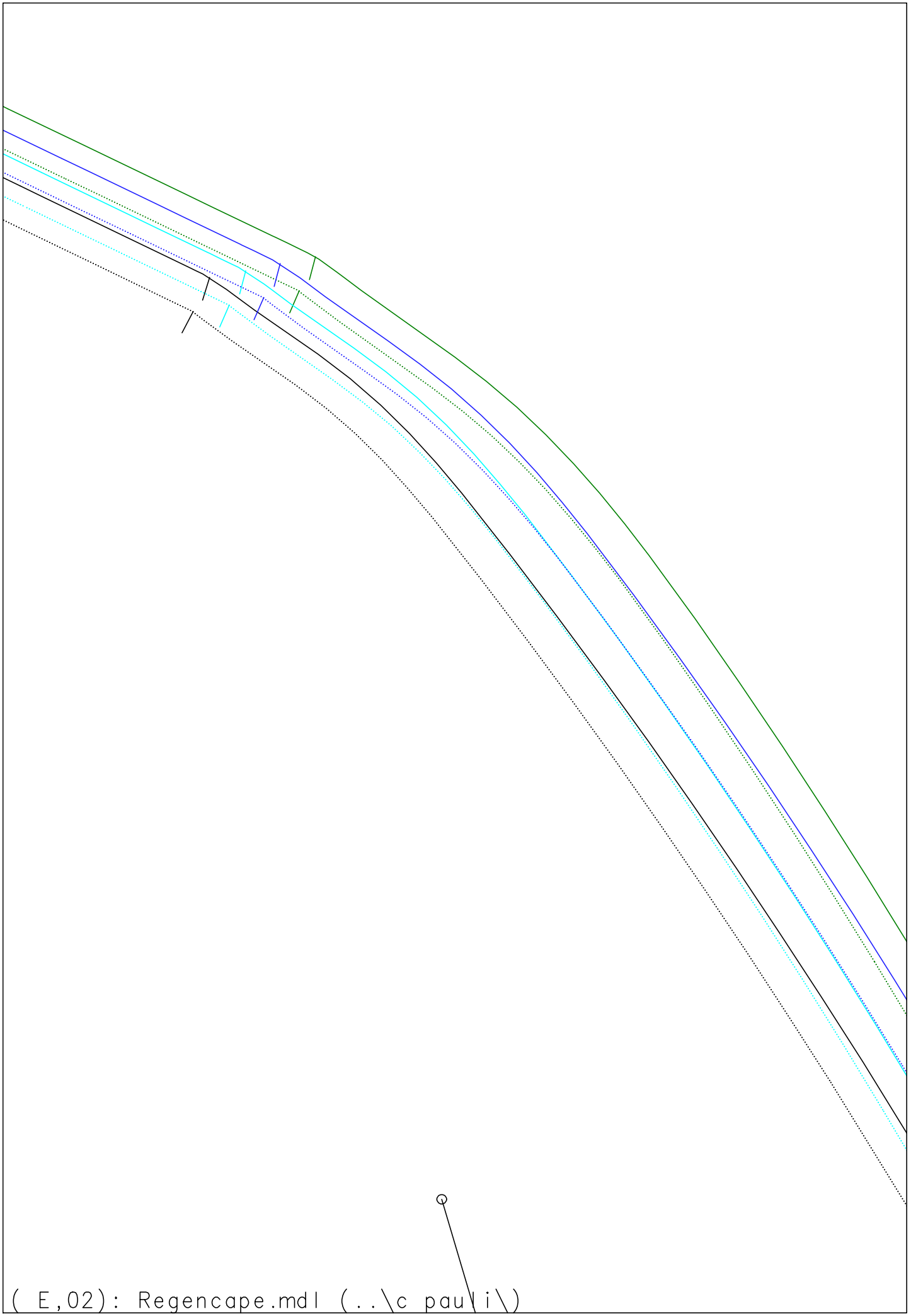
Größe: 110./ 116.

Größe: 98./ 104.

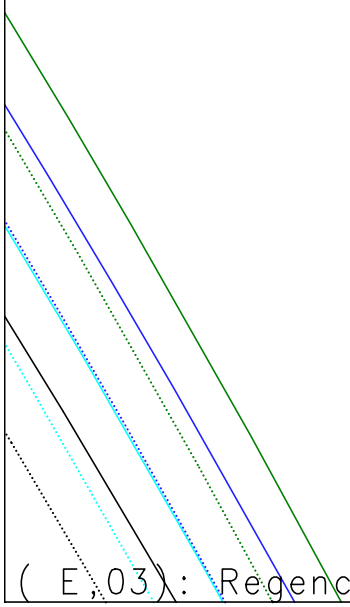
Größe: 86./ 92.

Umb r u c h

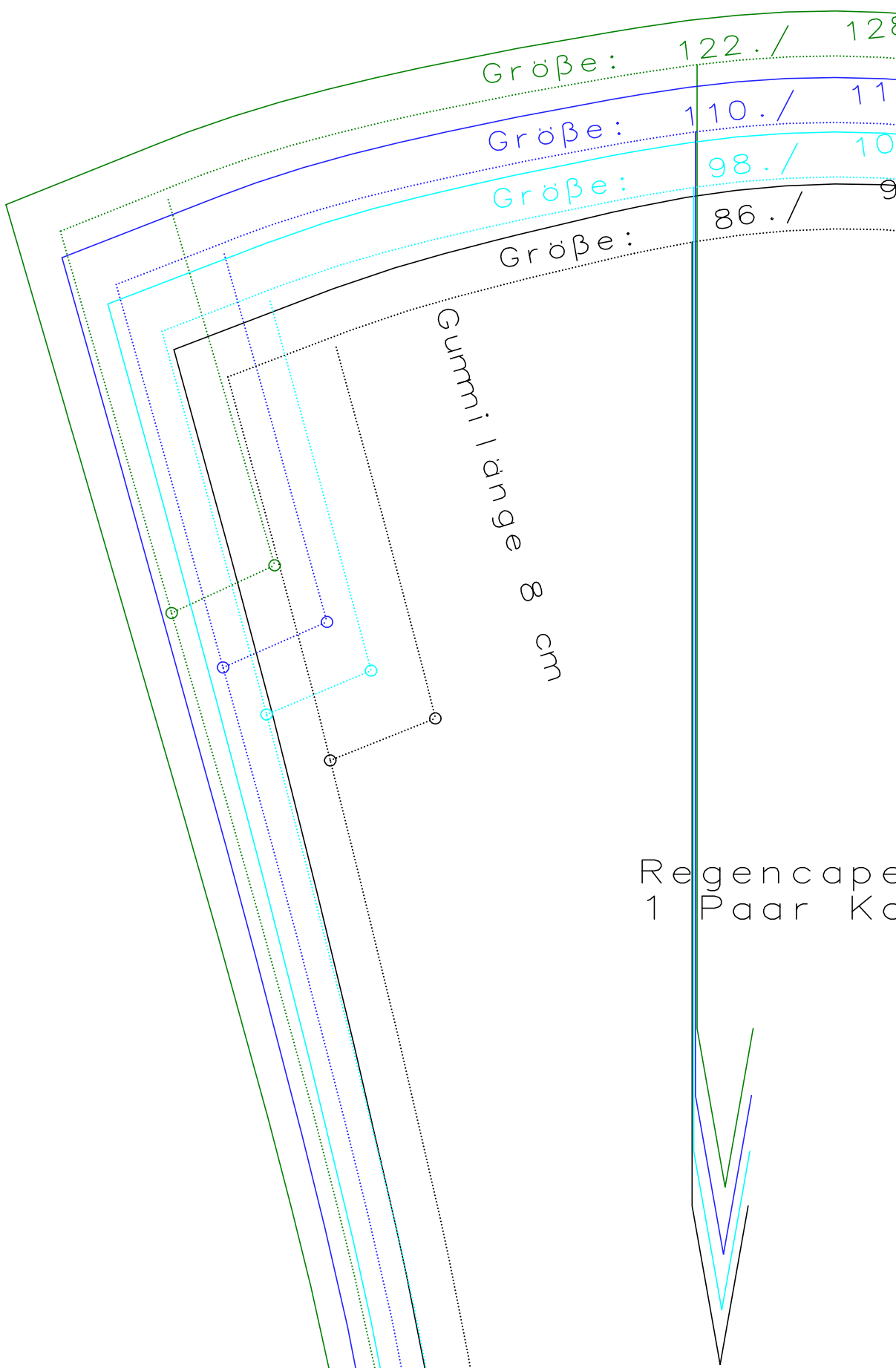




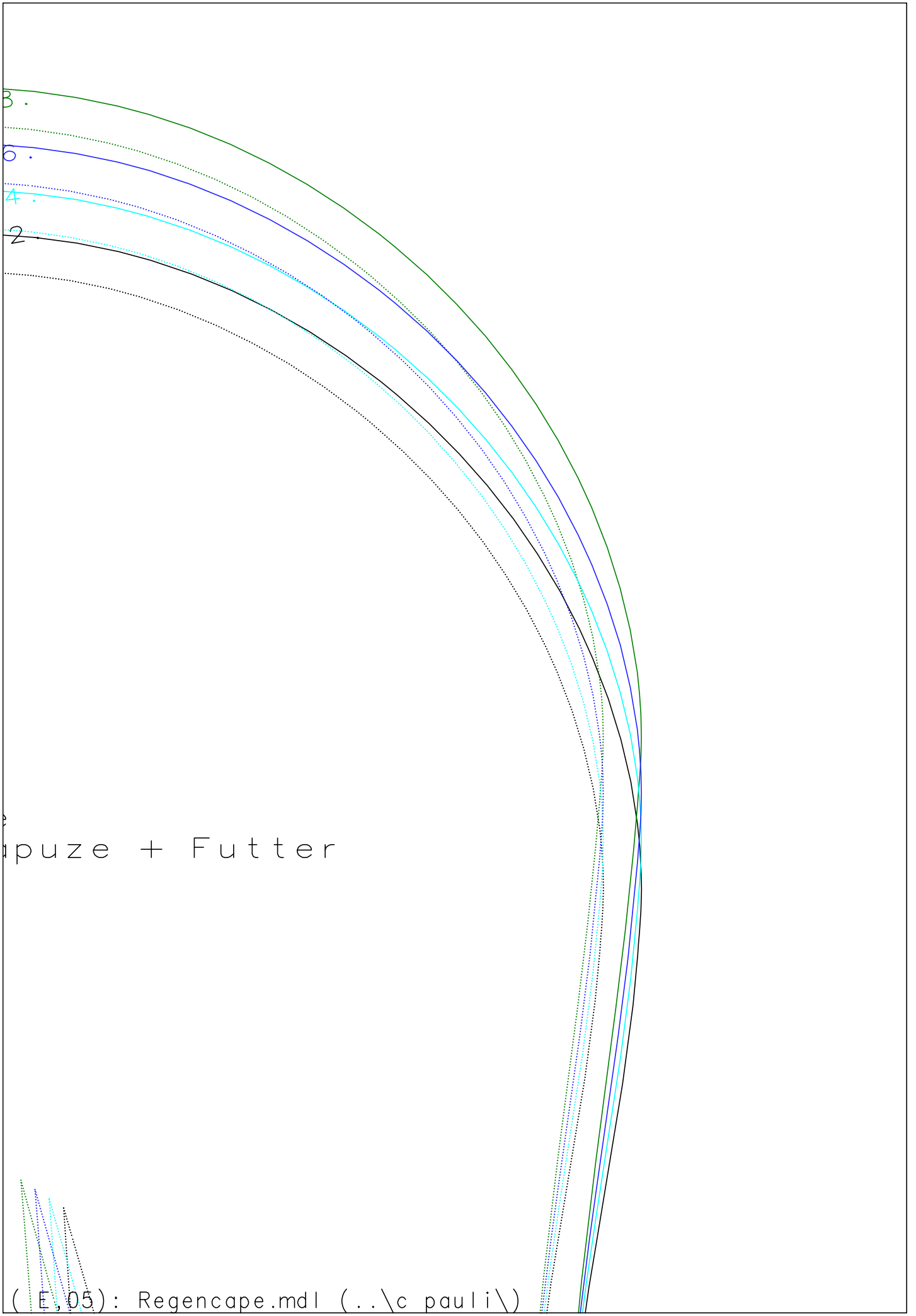
( E,02): Regencepe.mdl (..\c pauli\)



( E,03): Regencepe.mdl (..\c pauli\)







Opuze + Futter