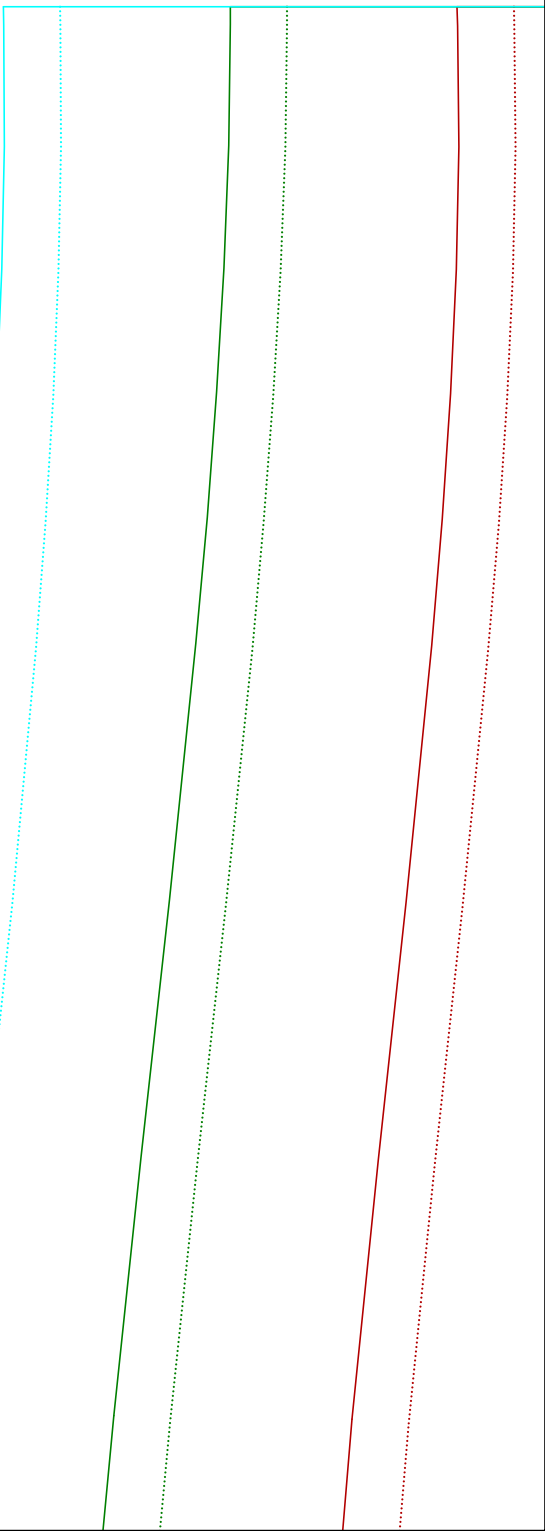
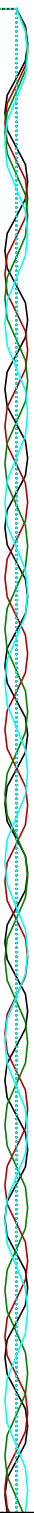
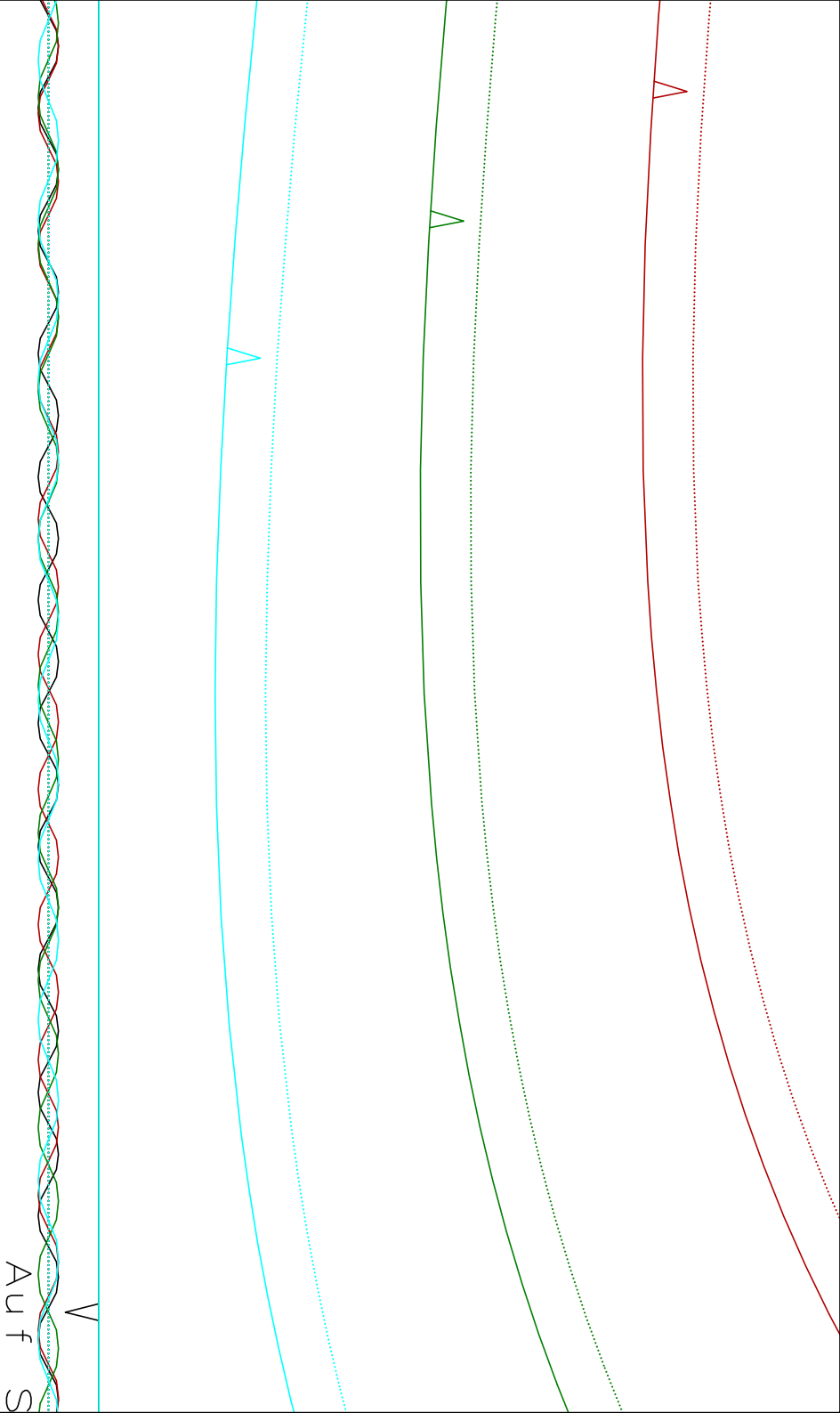


vordere Mitte

Fadenlauf

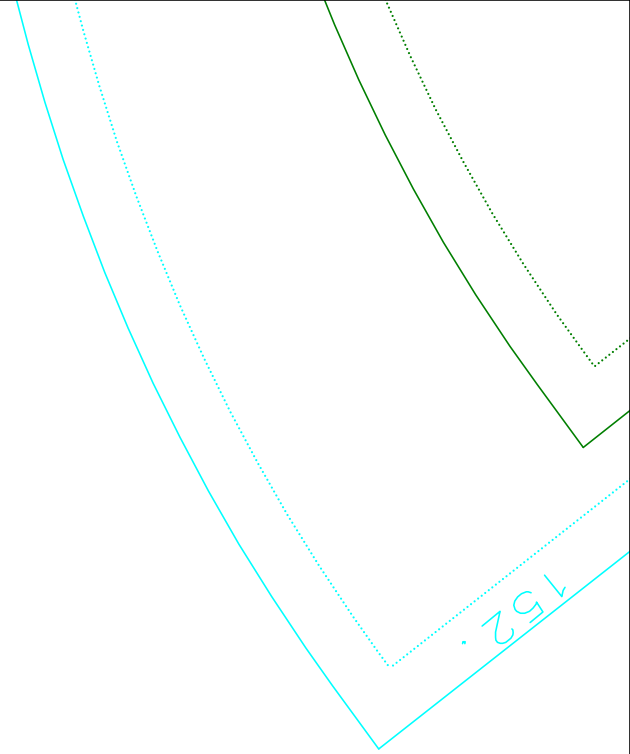
copyright c.pauli





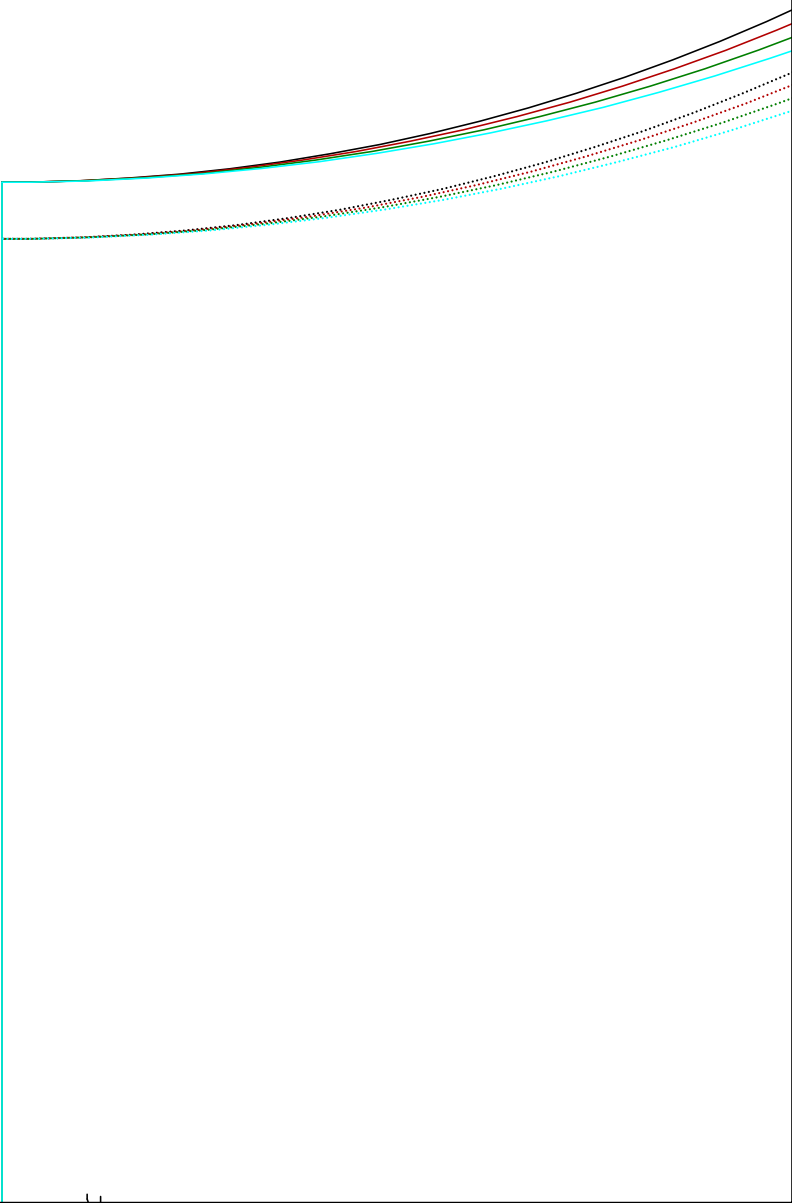
copyright c.pauli

P 1201 Volantrock
4= 2x Volant vorn



qumweite Kräusel n

copyright c.pauli

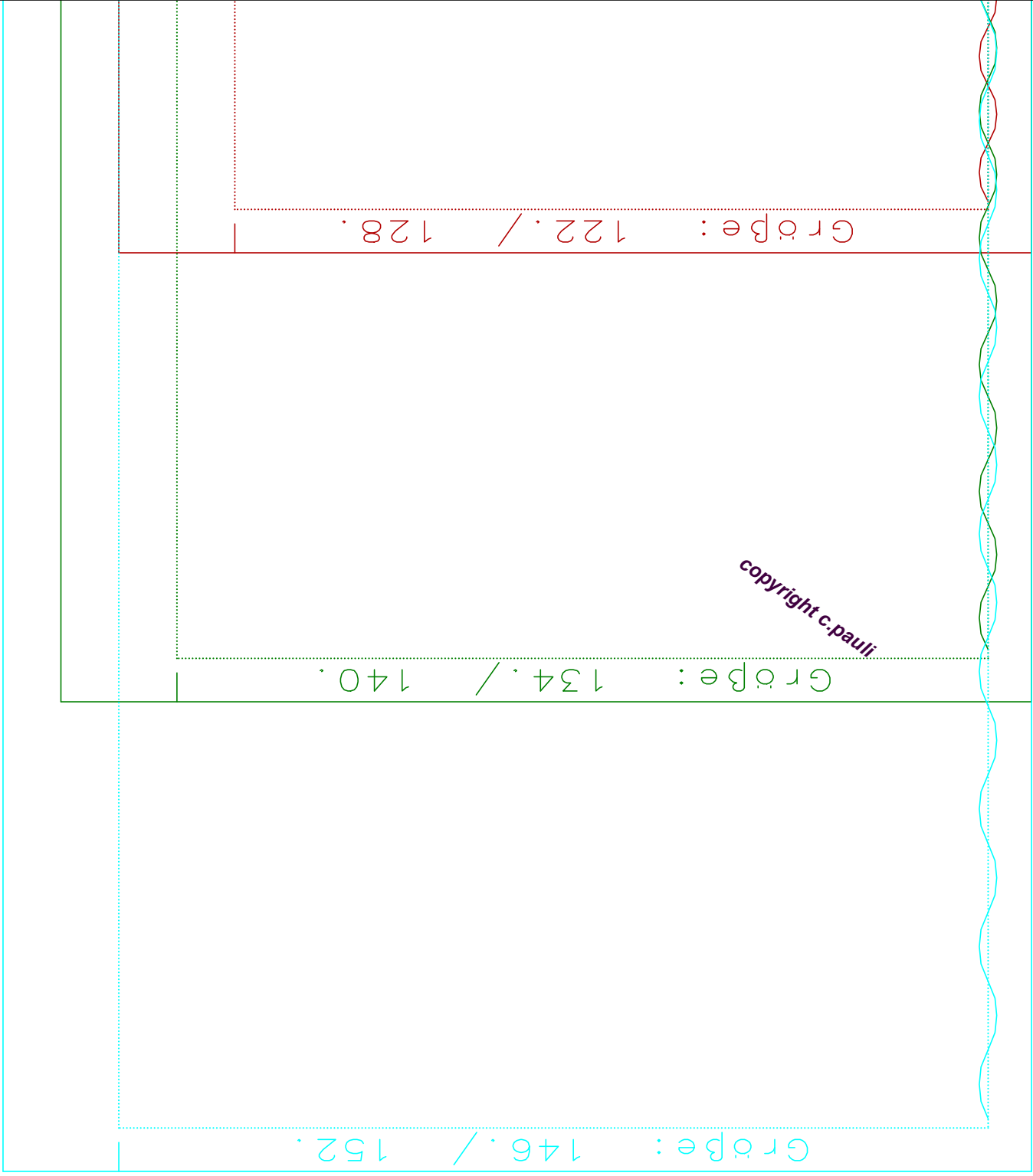


copyright c.pauli

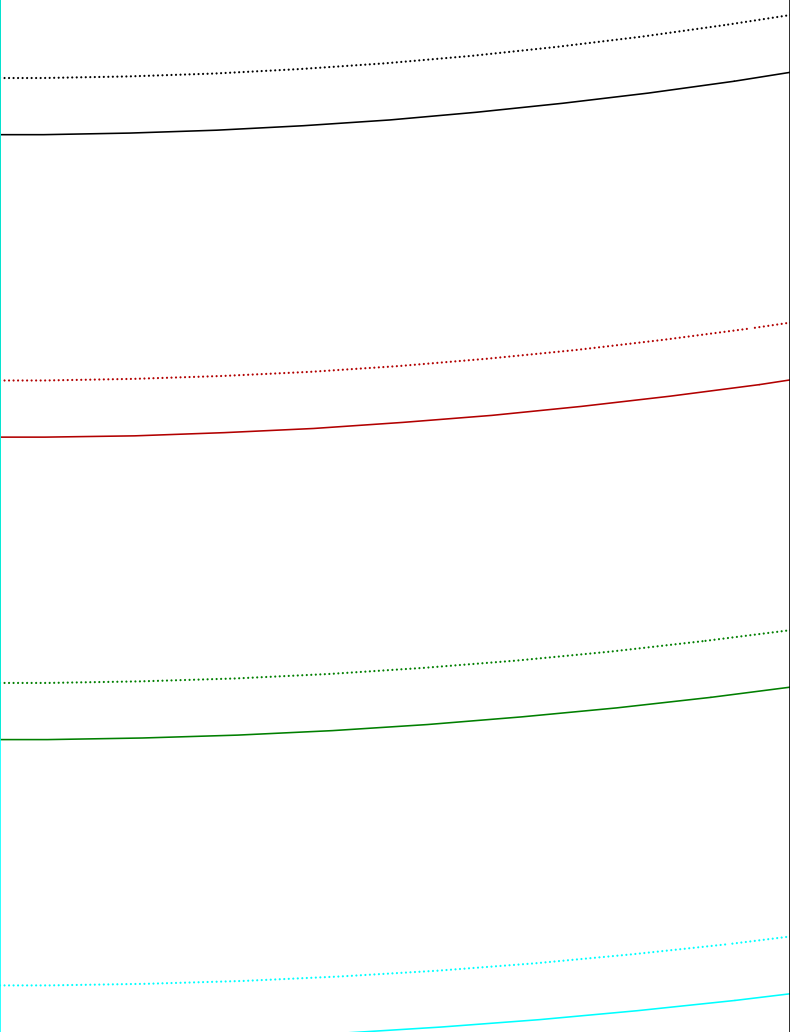
Größe: 110. / 116.

P 120
2 = 1 x

ere Mitte/Stoffbruch/Fadenlauf



hinte



copyright c.pauli

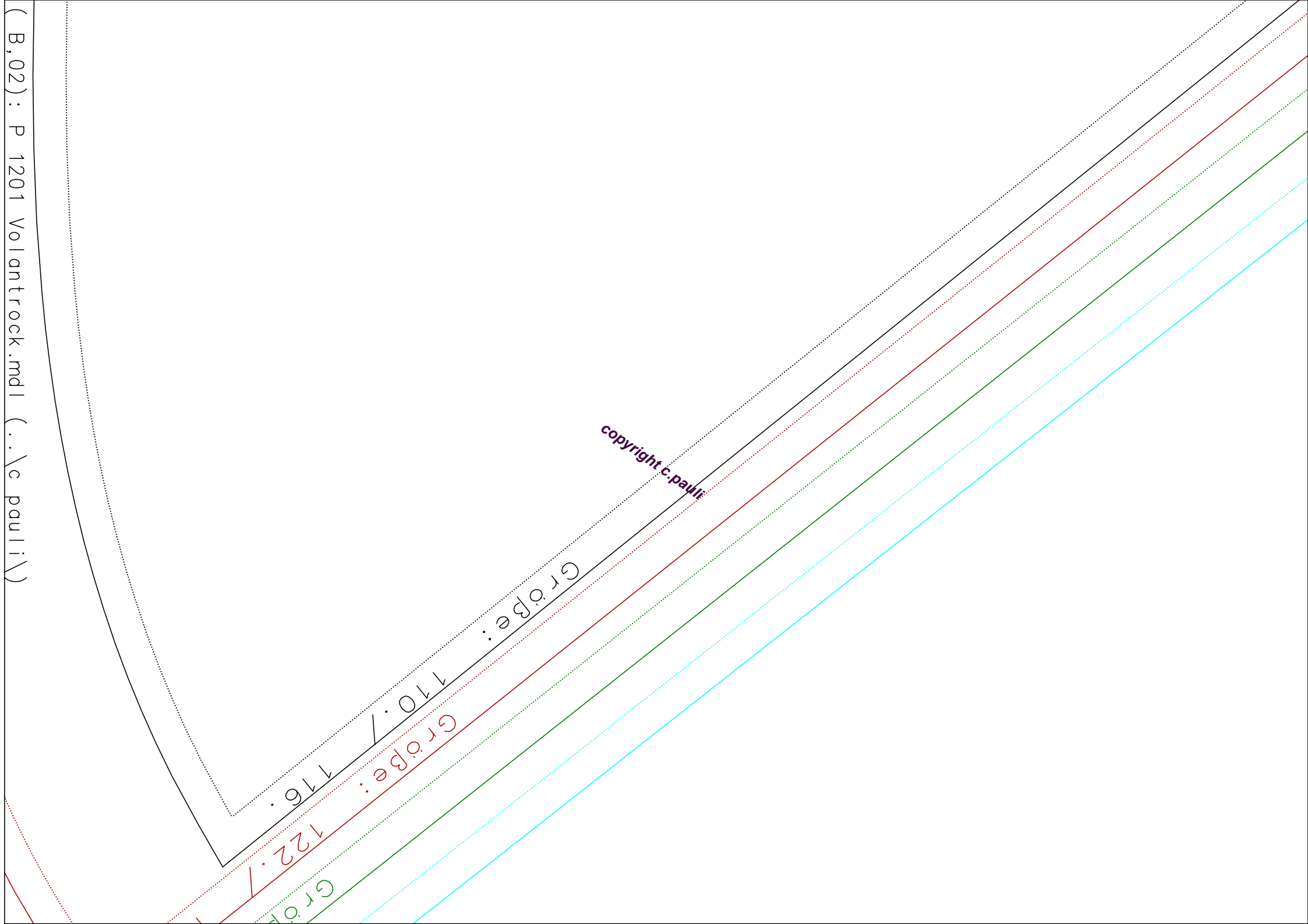
vordere Mitte/ Stoffbruch/ Fadenlauf

P 1201 Volantrock
1 = ~~1~~ X Vorderrock

copyright.c.pauli

copyright c.pauli

Größe: 110.7
Größe: 116.
Größe: 122.7
Größe: 122.7



Zur eigenen Sicherheit:
Kontrollfenster nachmessen!
Seitenlänge 10 cm
4 inches

Größe: 110. / 116.

Größe: ~~122~~ / 128.

Größe: 132. / 140.

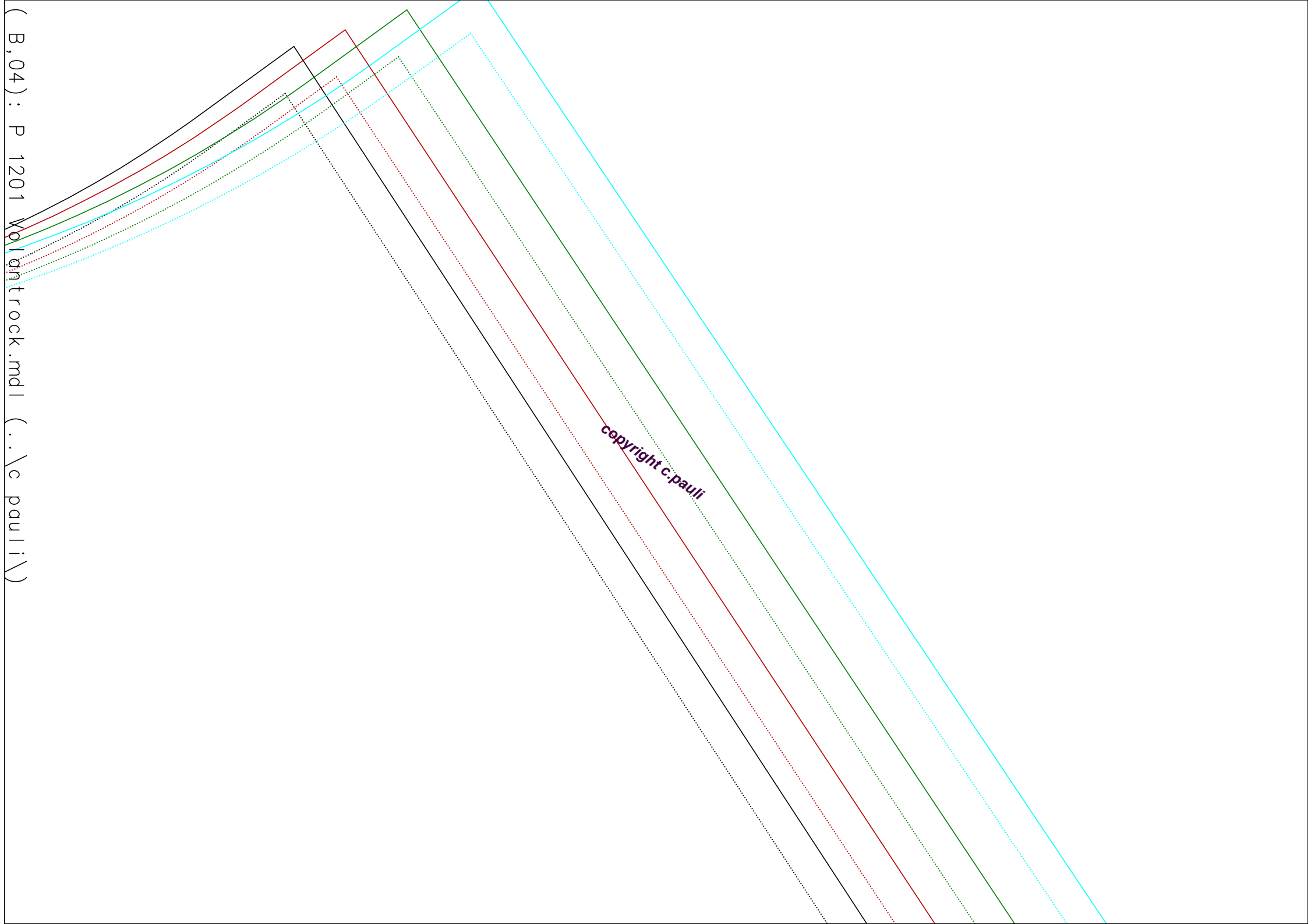
Größe: ~~146~~ / 152.

copyright c.pauli

Größe: 128.

Größe: 134. / 140.

Größe: 146.

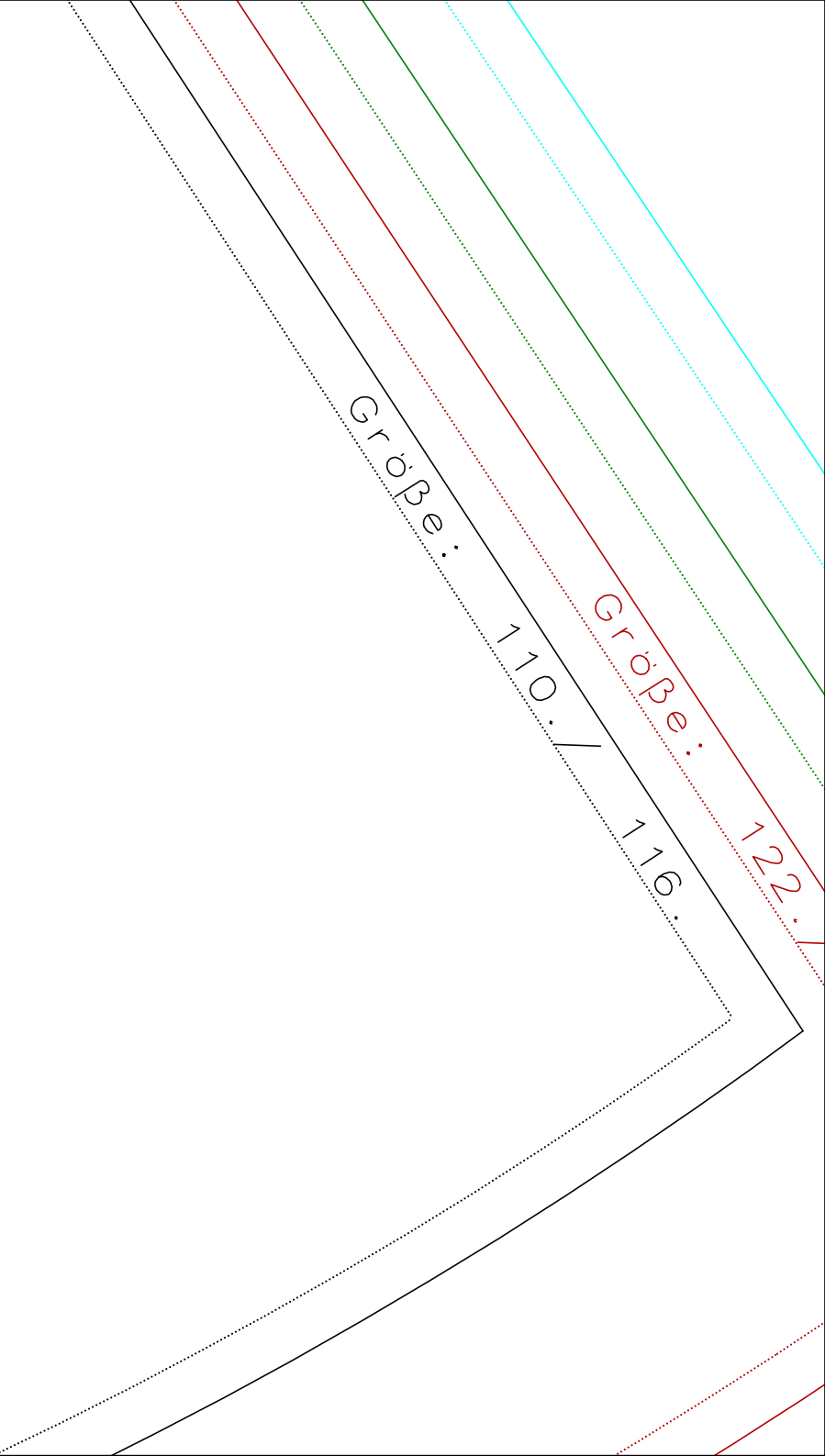


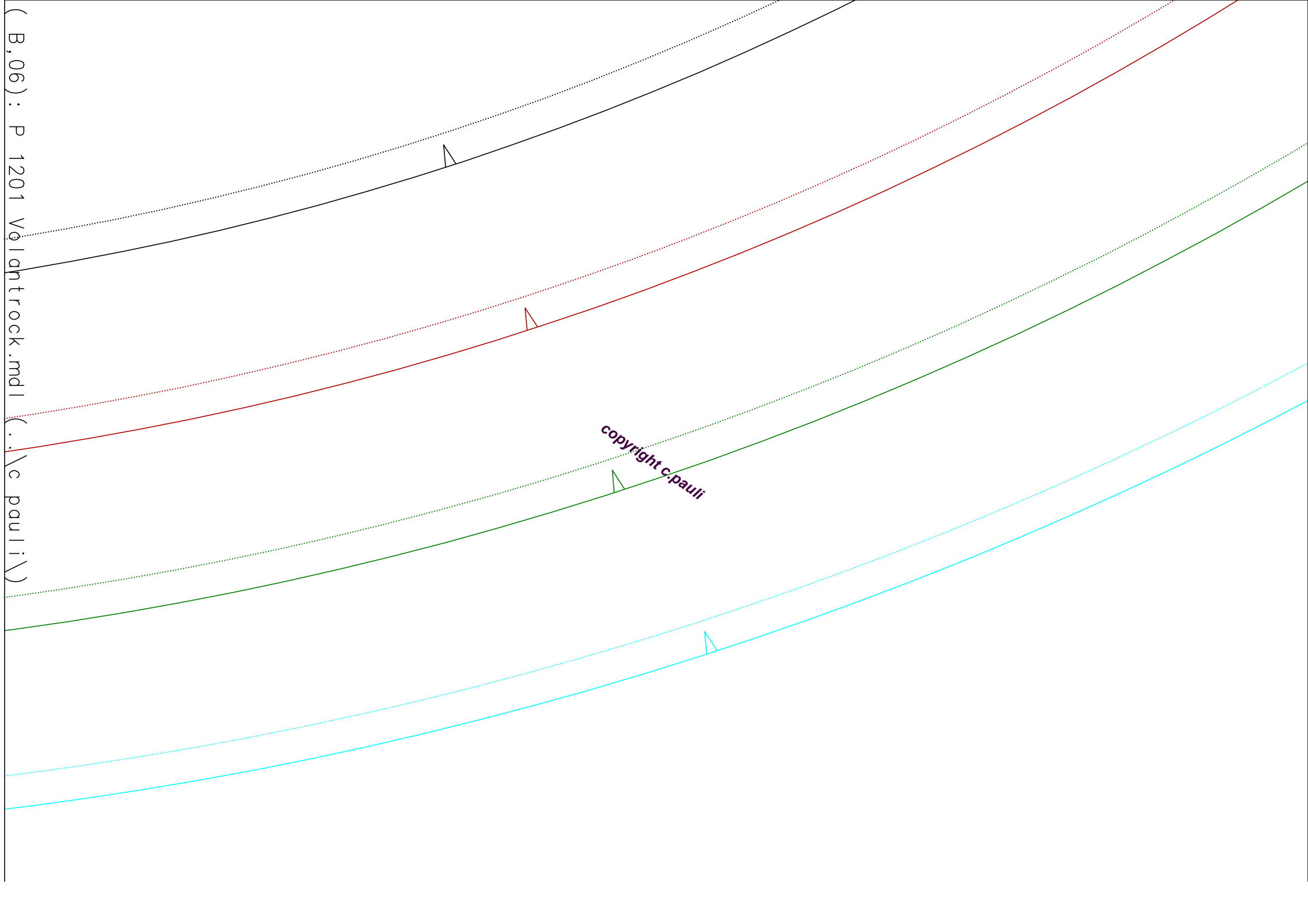
(B, 04) : P 1201
Kollantrock.mdl (..\c pauli\)

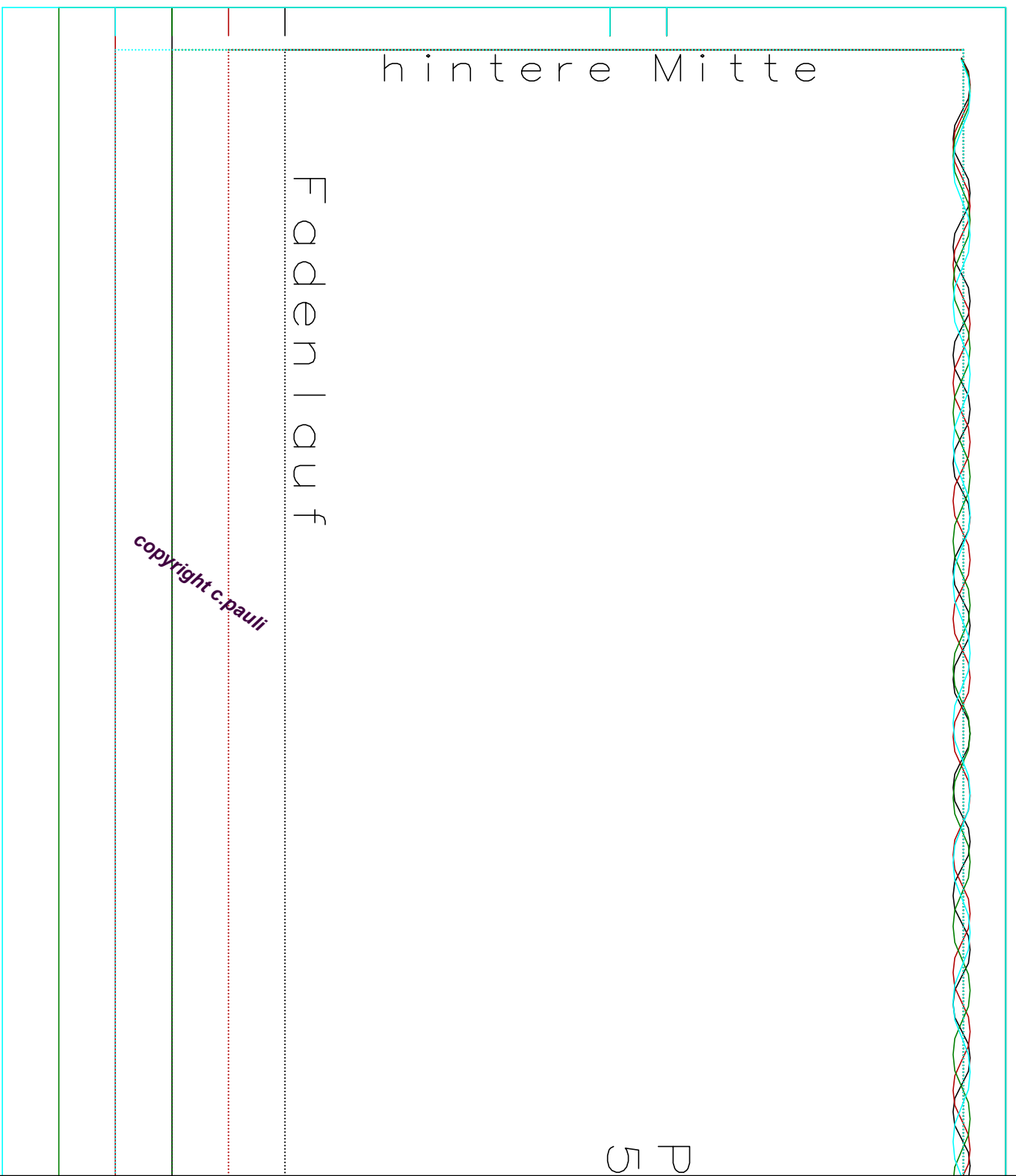
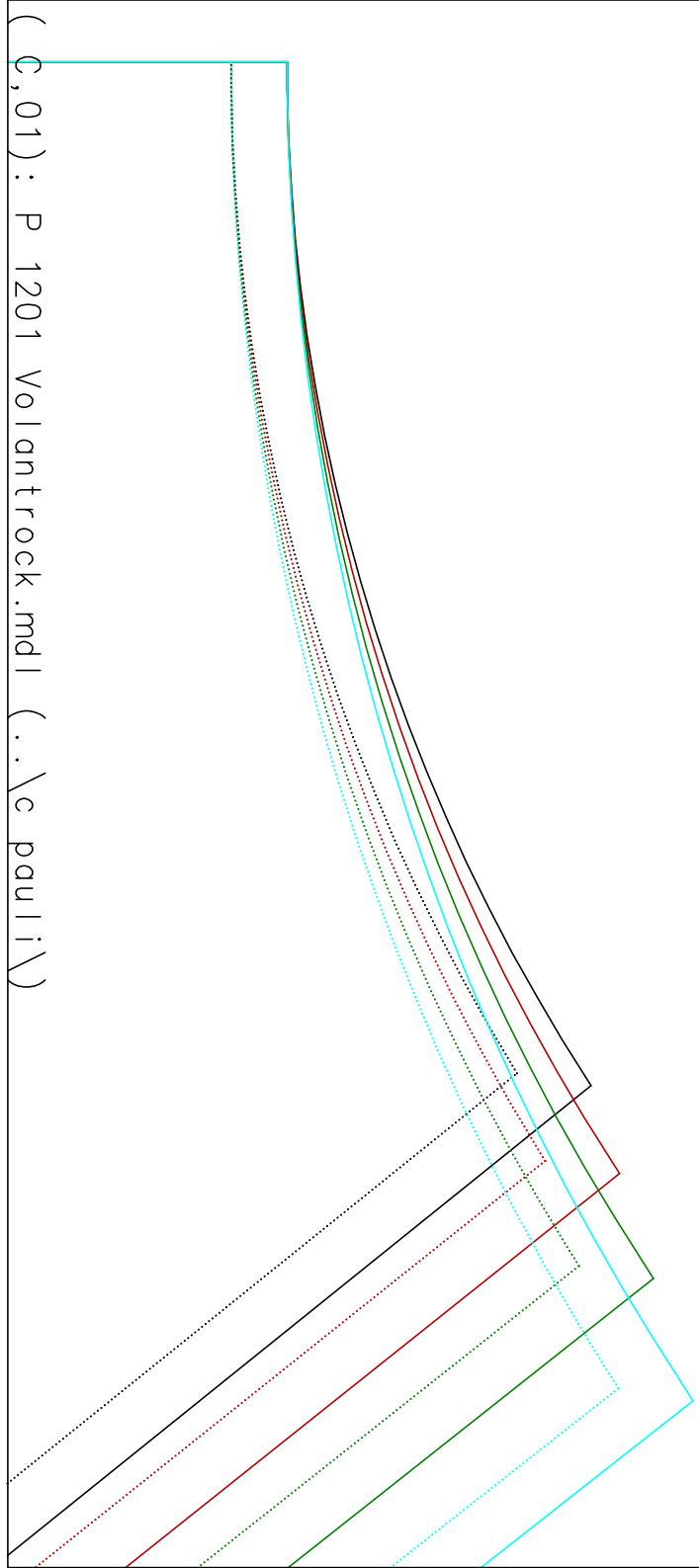
copyright c.pauli

Volantrock
Hinterrock

copyright c.pauli







1201 Volantrock
= 2x Volant hinten

copyright c.pauli

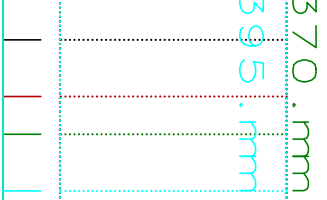


copyright c.pauli

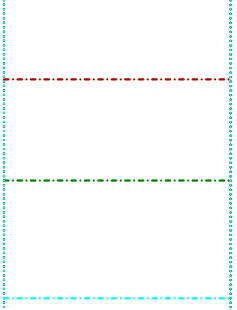
vordere Mitte
Fadenlauf

Gummilänge = 335 .mm
 Gummilänge = 350 .mm
 Gummilänge = 370 .mm

Gummi ansatz



Seitennaht





copyright c.pauli

P 1201 Volantrock
3= 1x Bund

Knopf

Knopfloch

110./ 116.

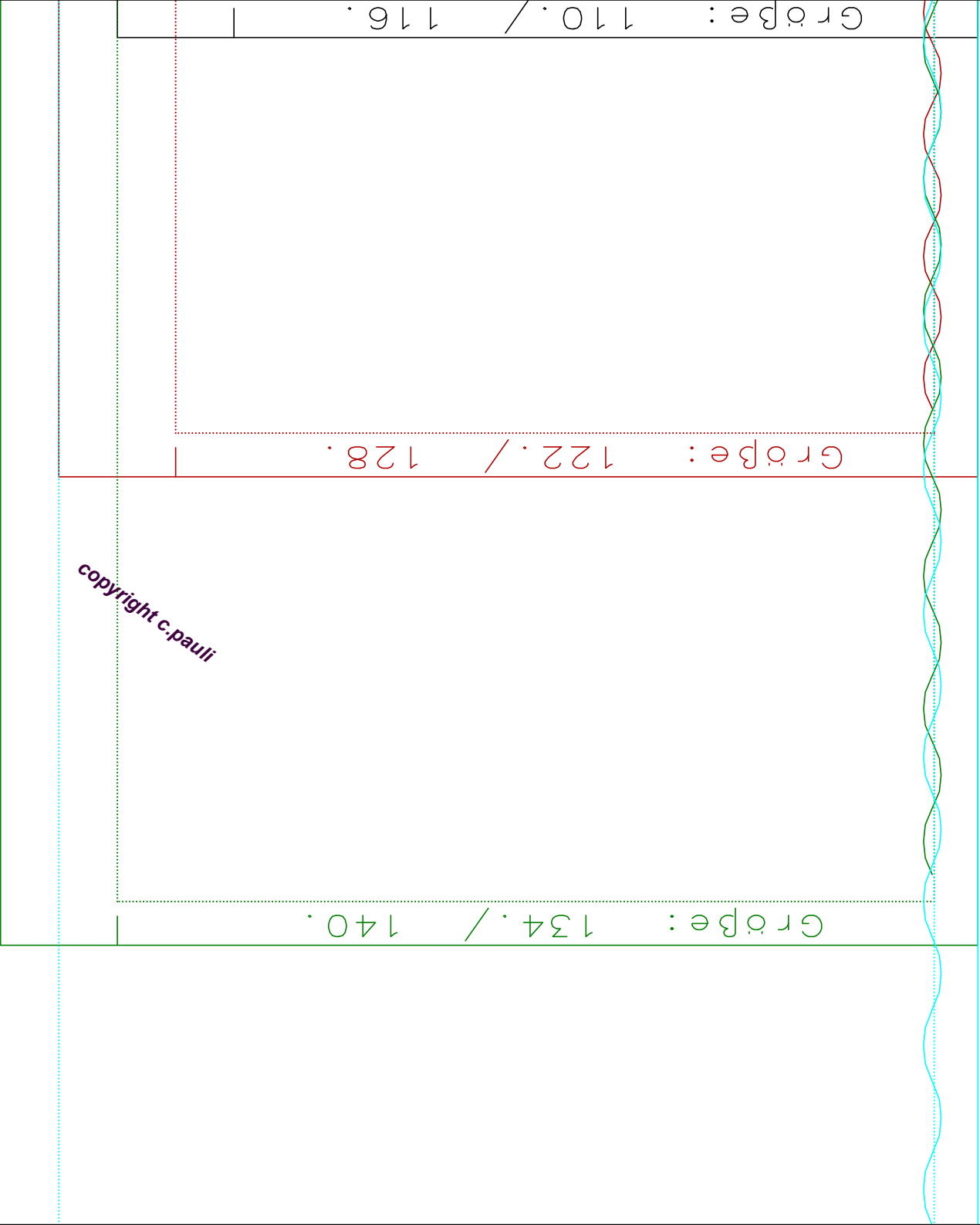
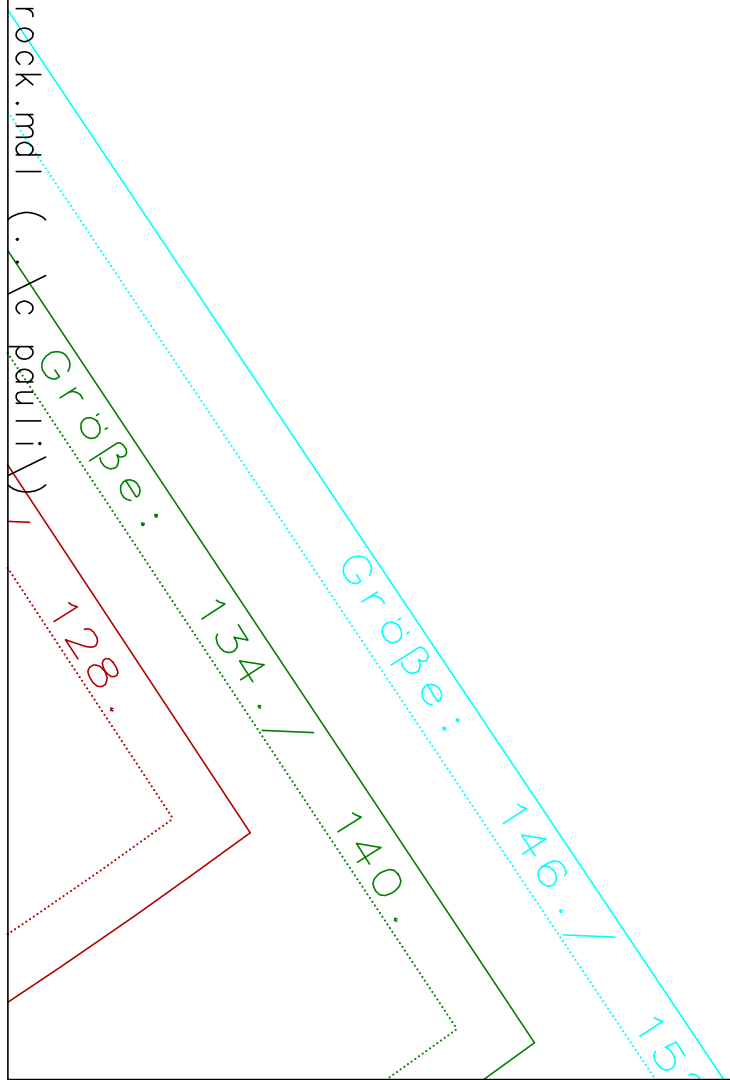


122./ 128.



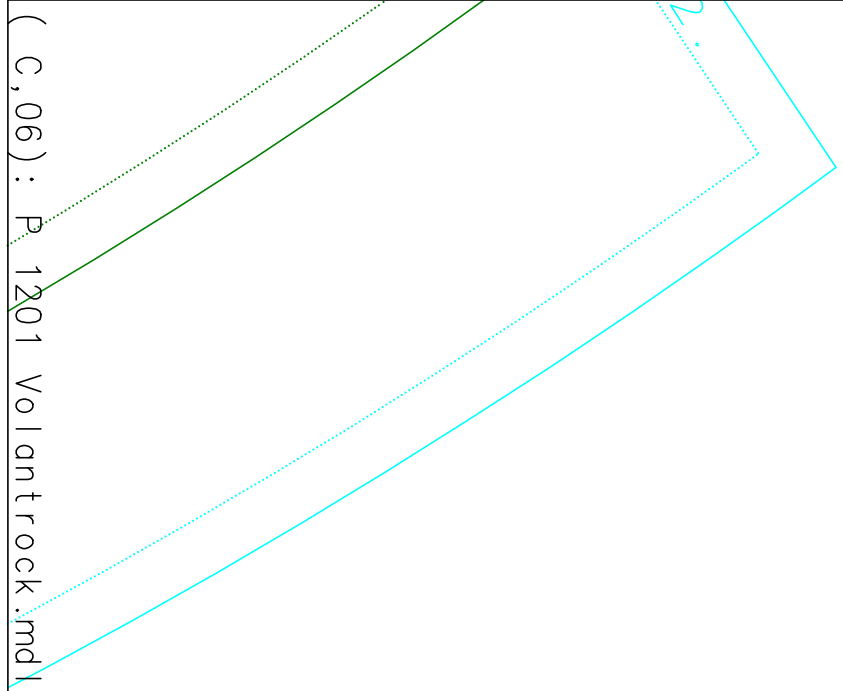
134./ 140.





Große: 146. / 152.

copyright c.pauli



(C,06): P.1201 Vollantrock.mdl (...c.pauli\)